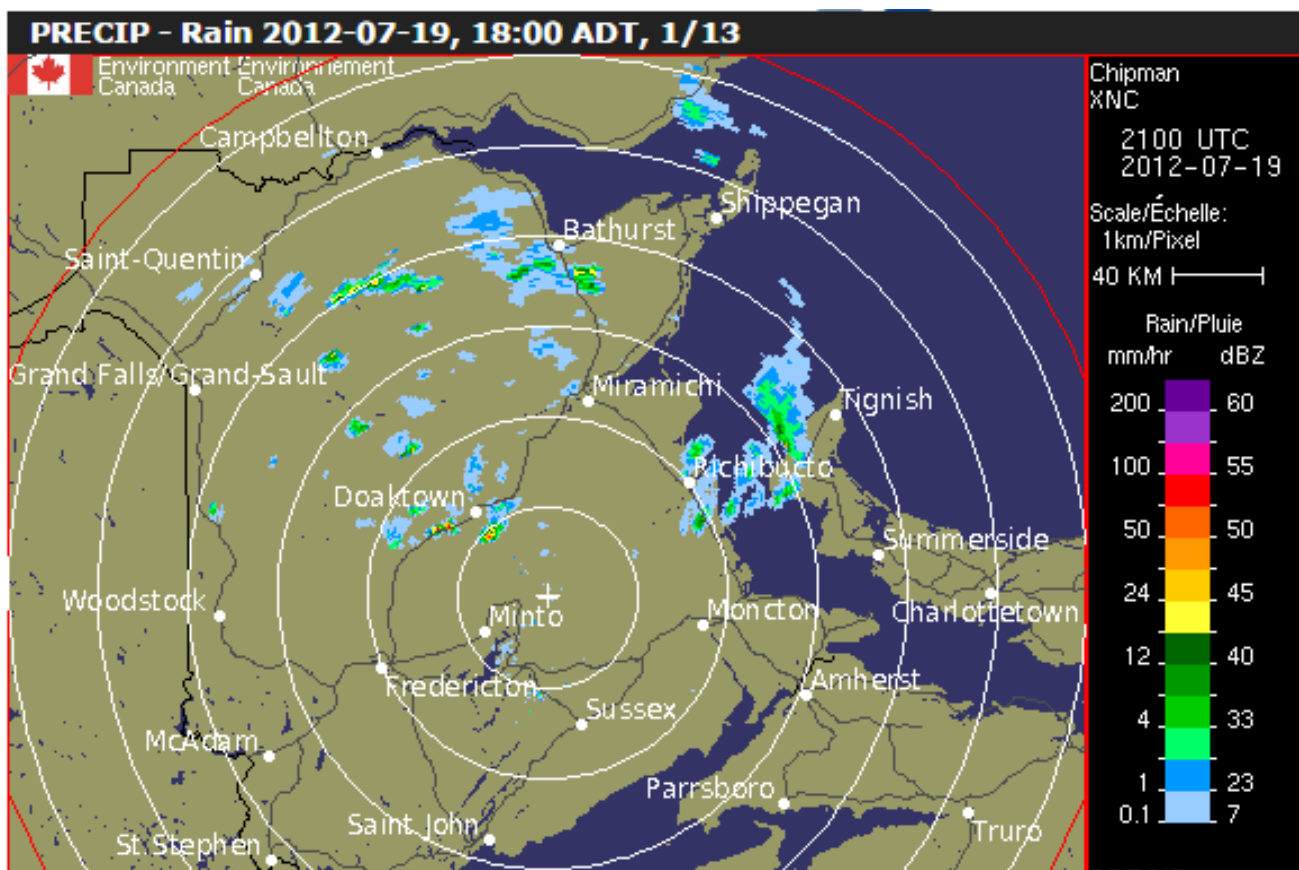
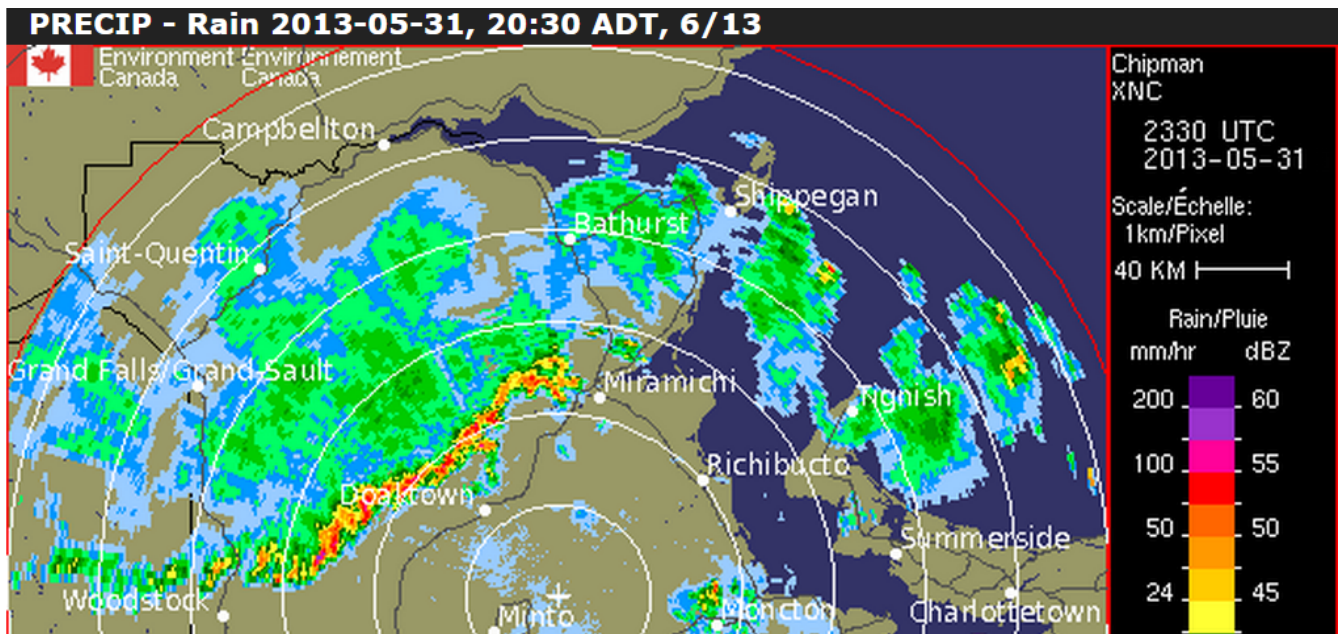


Spot the Thunderstorm on Radar

Single Cell Thunderstorm



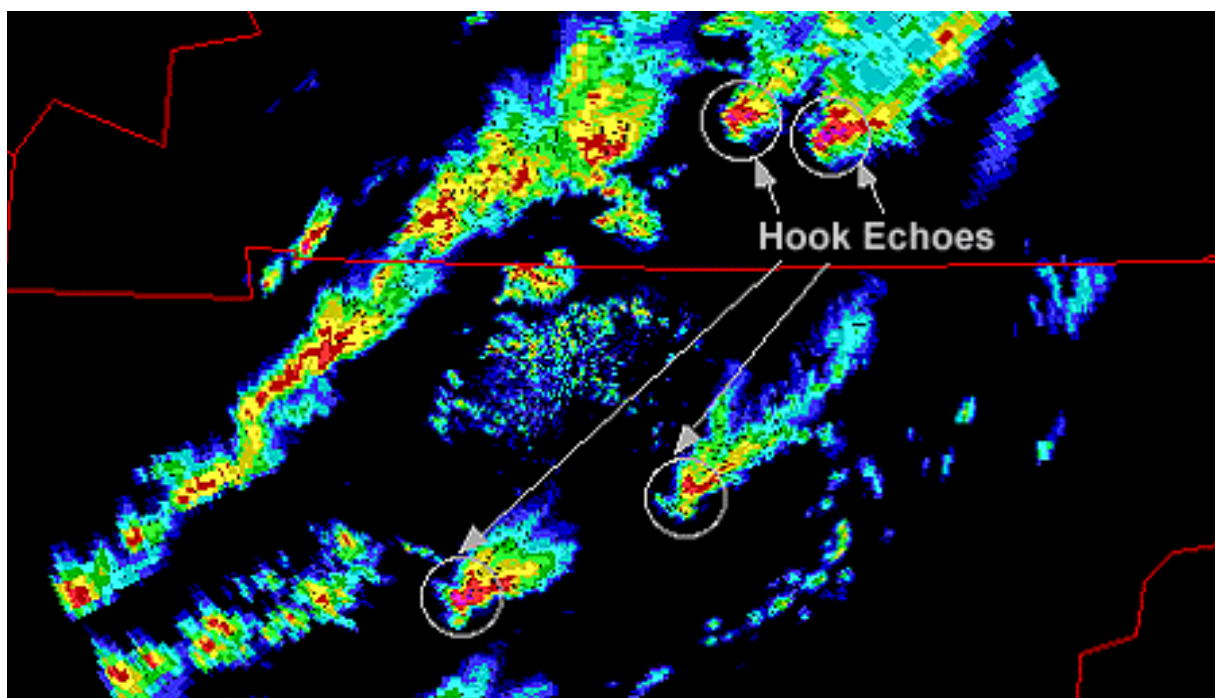
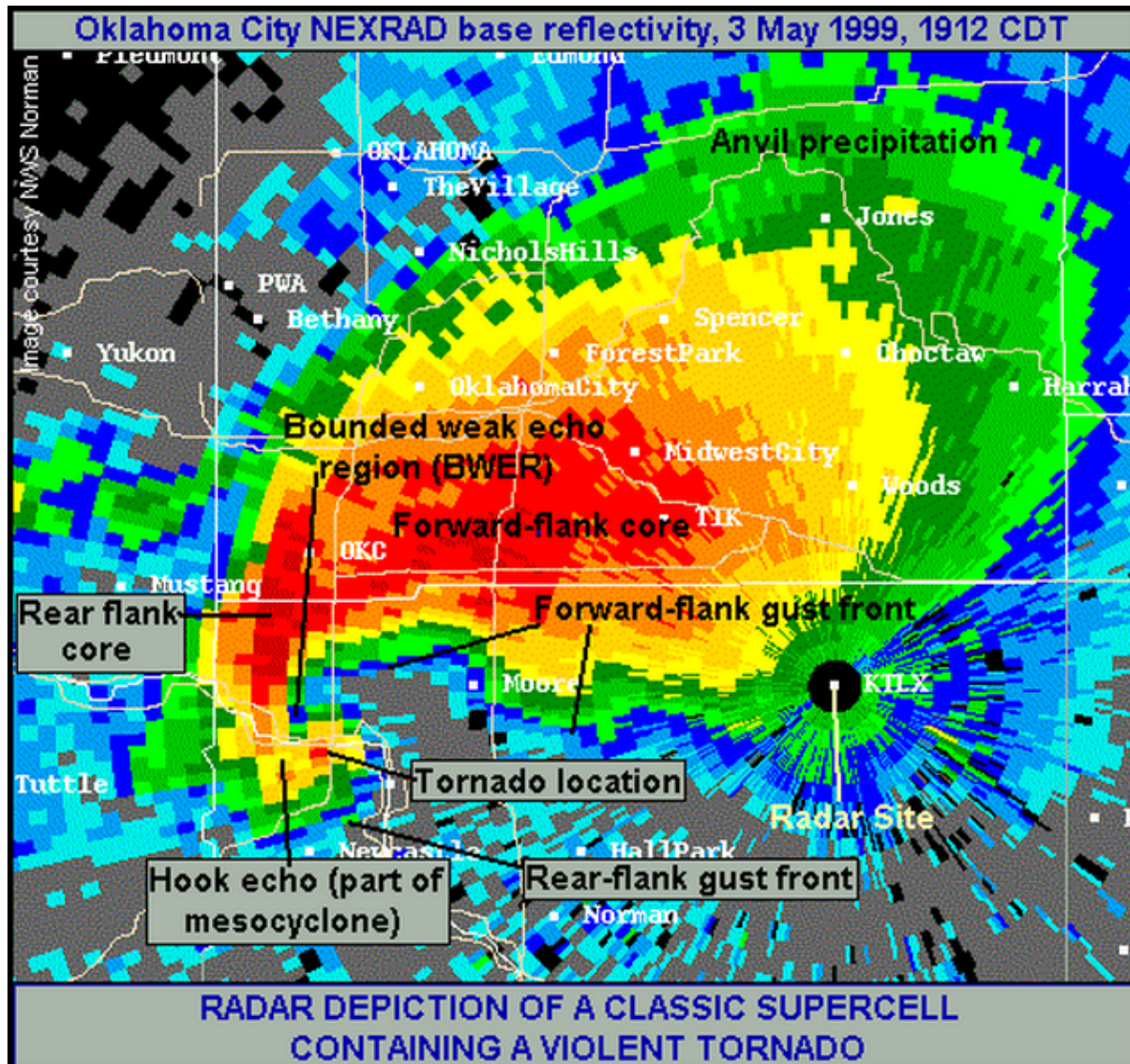
Squall Line



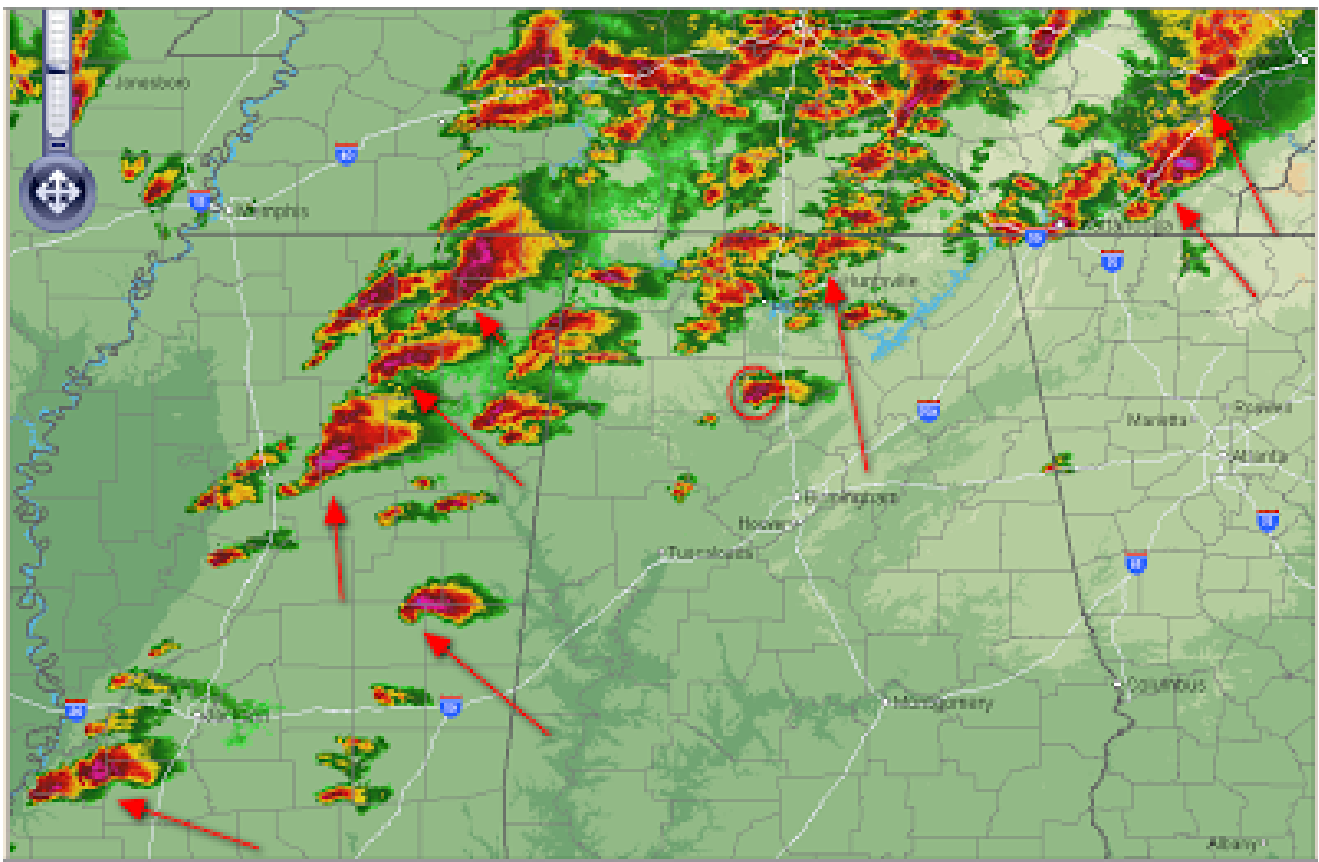
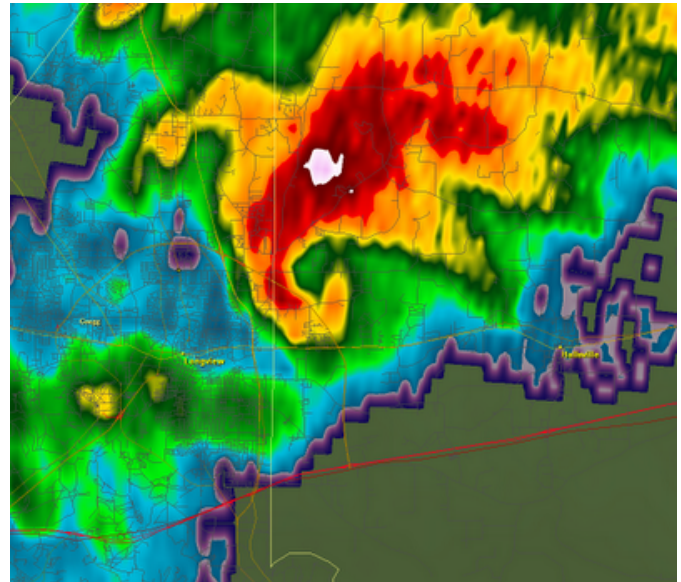
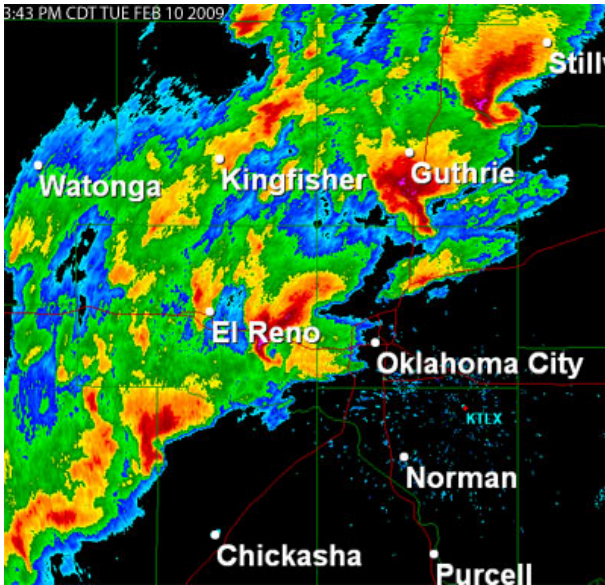
Me.

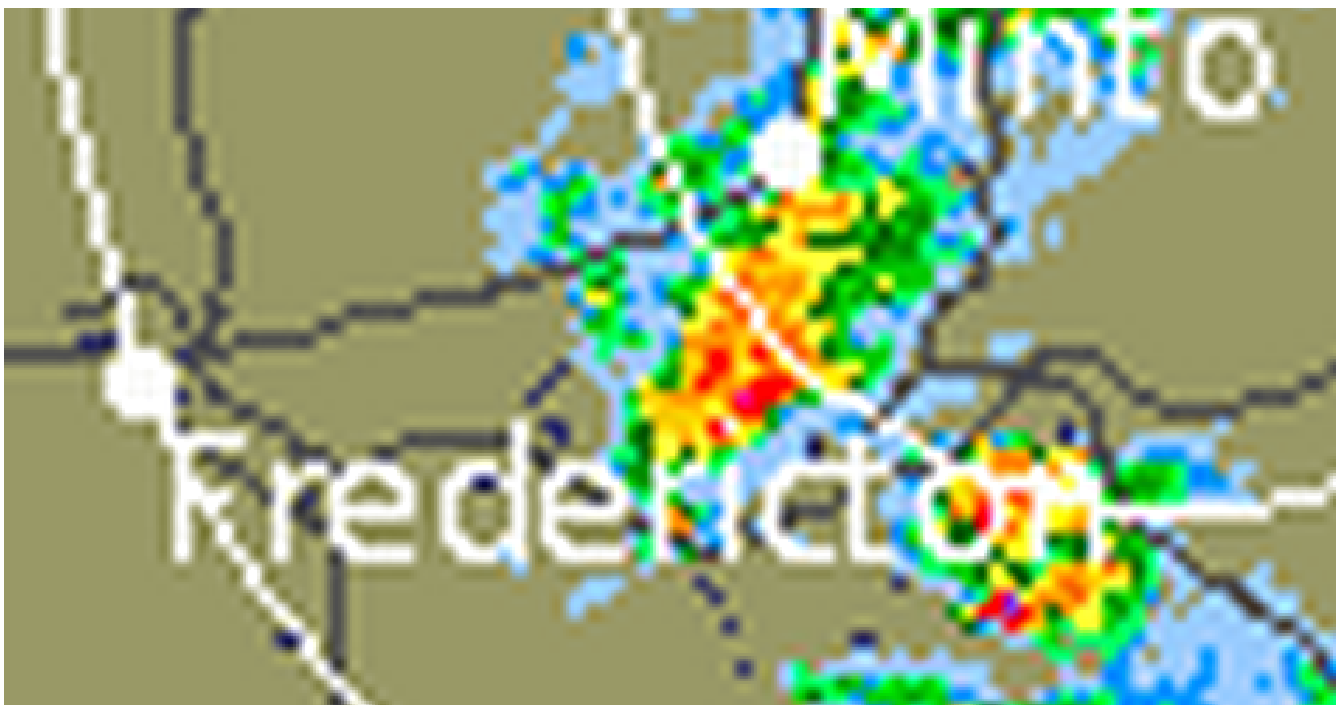
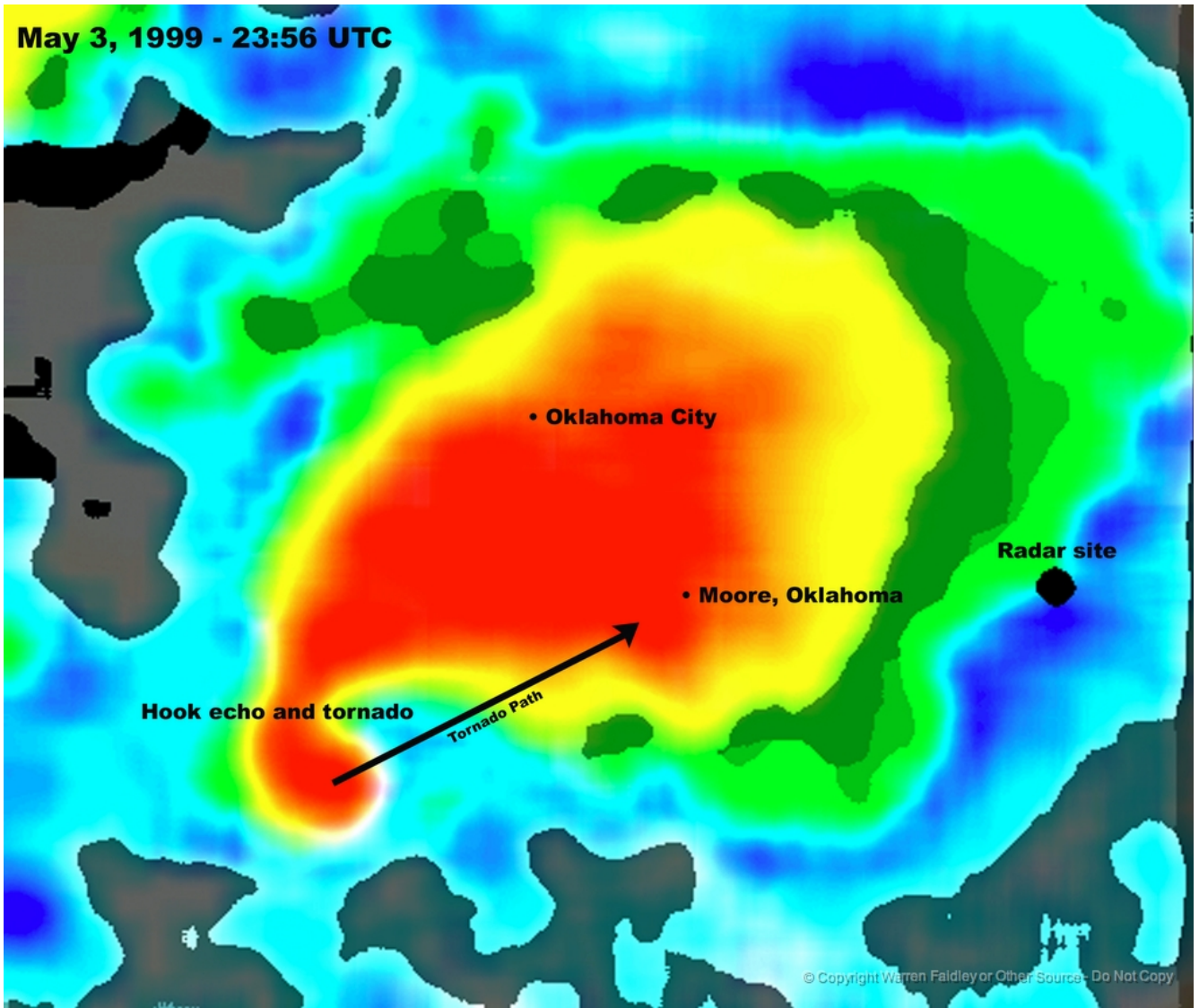


Hook Echo

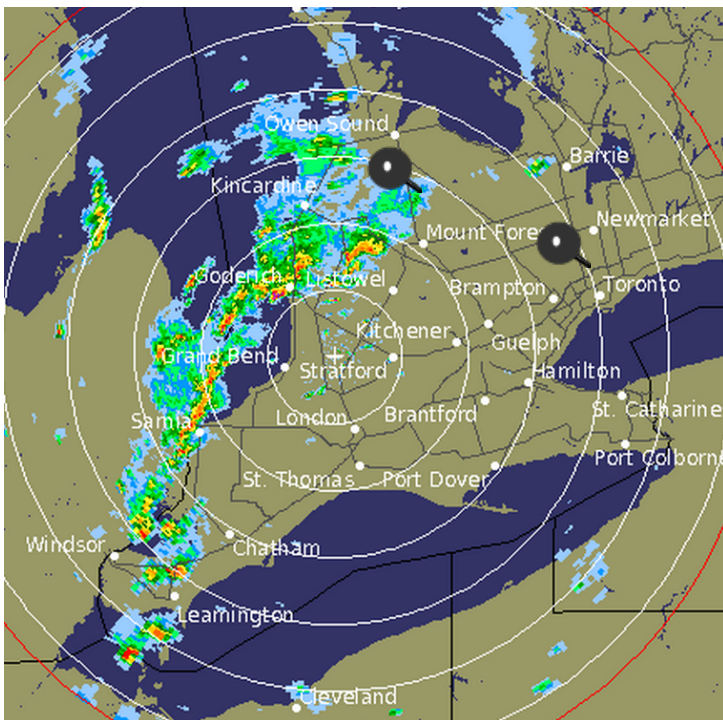


To the Southwest





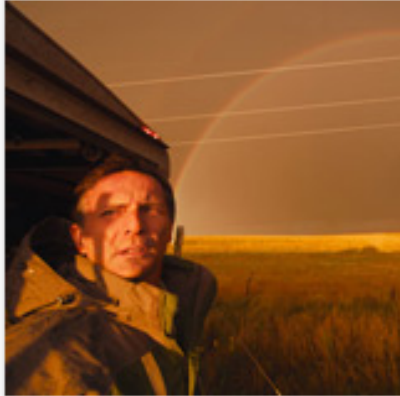
19 TORNADOS TOUCH DOWN IN SOUTHERN ONTARIO - LARGEST OUTBREAK IN CANADIAN HISTORY.



- Set to 2 hour playback at 1900hrs to view Durham to Markdale F2.
- Adjust to 2100hrs to view Vaughn F2x2.

Miami 1997

The Last Chase



→ **Last Days of a Storm Chaser**
 Man versus tornado

Converging Paths



→ **Converging Paths**

Tim Samaras sent a tweet on May 31 saying the Oklahoma storms were dangerous. But not even the most seasoned storm chasers could have imagined the ruthless unpredictability of the El Reno tornado.

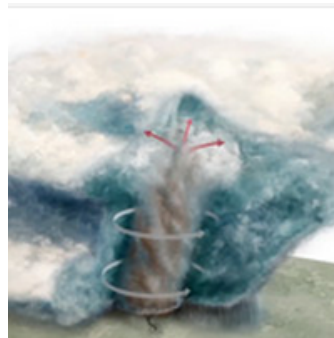
Data Map



→ **Where Twisters Strike**

Tornadoes 1950-2013, rated 1 to 5 on the Enhanced Fujita (EF) scale. Twisters frequently strike in the Deep South as well as in the Great Plains.

Motion Graphic



→ **In Harm's Way**

Tornadoes have touched down in every state. But big ones happen most regularly each spring in Tornado Alley, from Texas to the northern Great Plains.