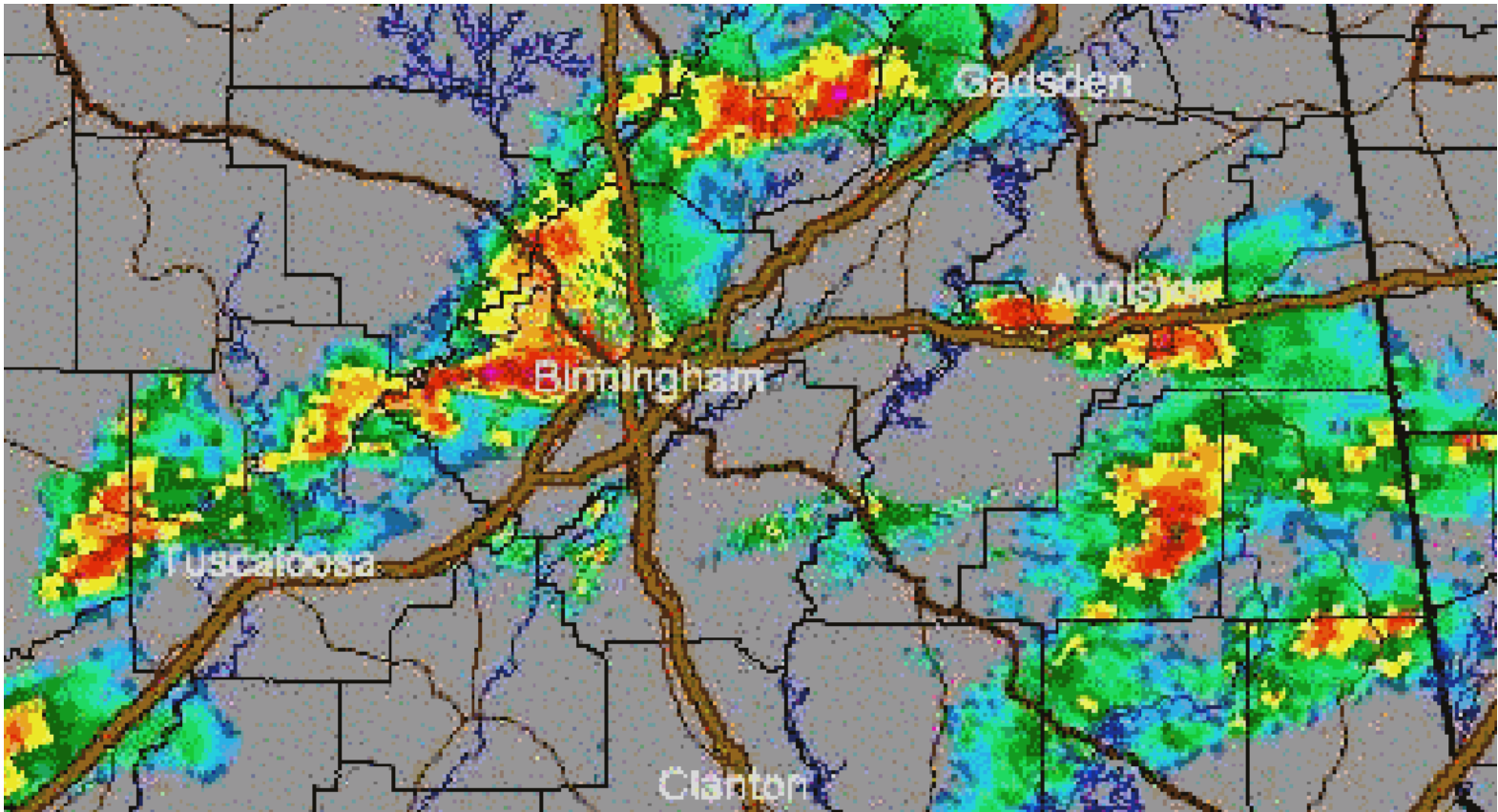


1. Describe, in general, how a severe thunderstorm forms. Include how hail and tornados may be possible and safety precautions that should be taken.

2. Name the types of storm clouds in the following images (Wall, Shelf, Cumulonimbus, or Mammatus):



3. Circle the most likely location of the tornado in this radar image (may have to use the colour pic from the file):



4. Summarize thunder and lightning. Include various types, causes, terminology, and safety precautions.