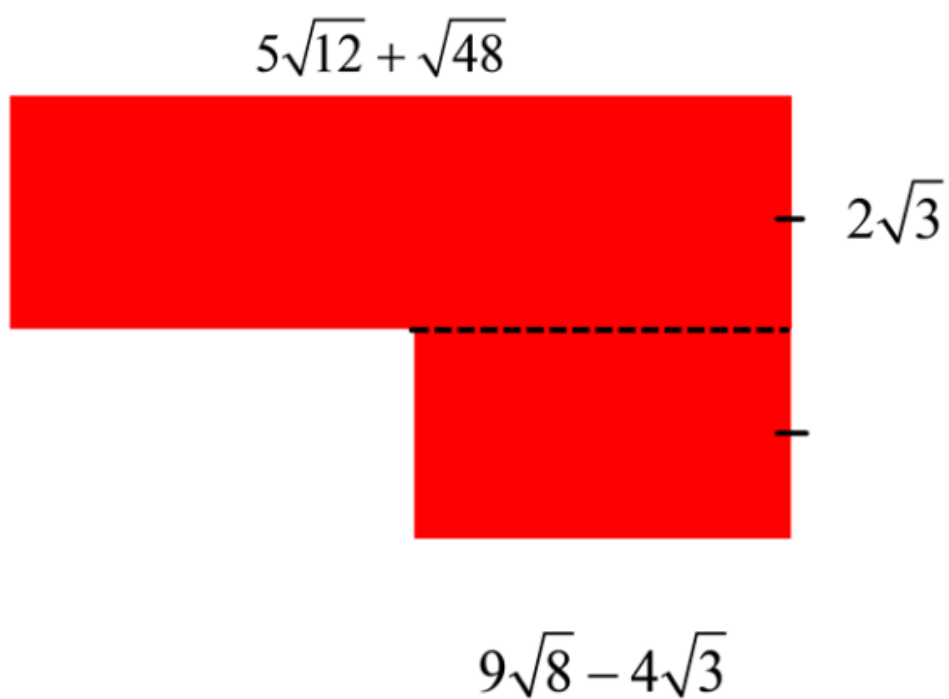


Find the area!



Find the area!

1st

$$2\sqrt{3} (5\sqrt{12} + \sqrt{48})$$

$$10\sqrt{36} + 2\sqrt{144}$$

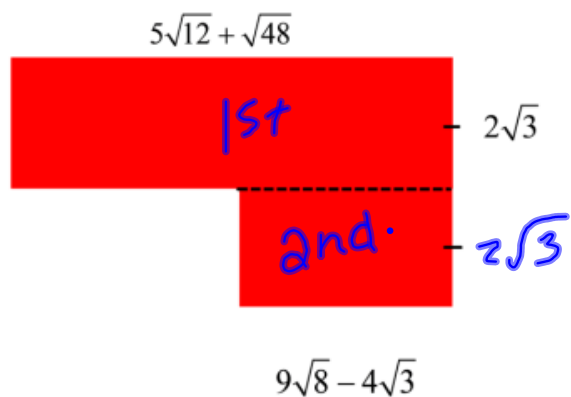
$$\begin{aligned} 10(6) + 2(12) \\ 60 + 24 \\ = 84 \end{aligned}$$

2nd

$$2\sqrt{3} (9\sqrt{8} - 4\sqrt{3})$$

$$18\sqrt{24} - 8\sqrt{9}$$

$$\begin{aligned} 18\sqrt{4 \cdot 6} - 8(3) \\ 36\sqrt{6} - 24 \end{aligned}$$



Total Area

$$84 + 36\sqrt{6} - 24$$

$$= 60 + 36\sqrt{6}$$

