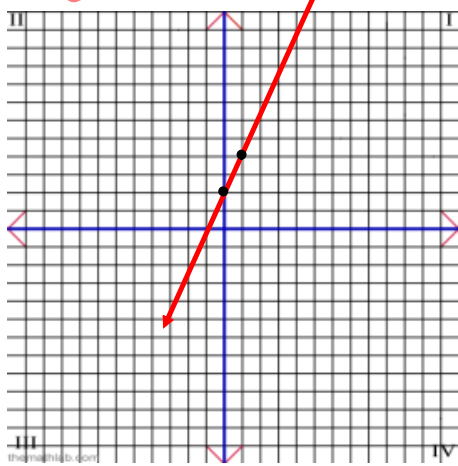


1.  $y = mx + b$



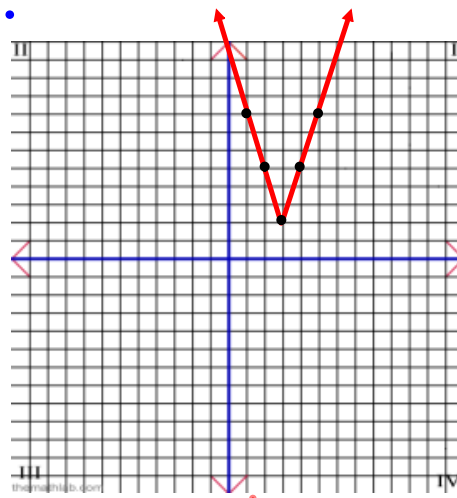
Function: Linear

Equation:  $y = 2x + 2$

Slope =  $\frac{2}{1} = 2$

y-int = 2

2.



Function: Absolute Value

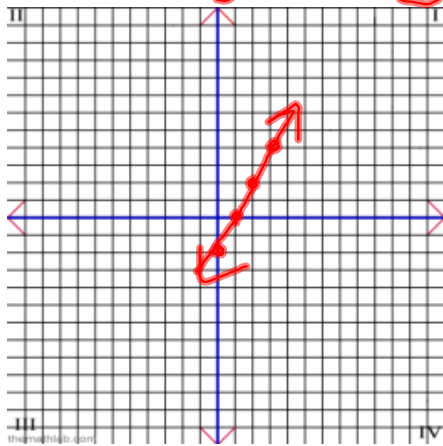
Equation:  $y = +3|x - 3| + 2$

V: (3, 2)

SF: 3

Dir: Up

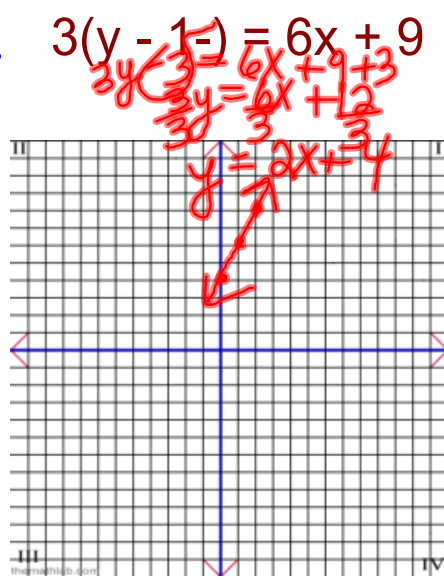
3.  $5y - 10 = 10x - 20 + 10$   
 $5y = 10x - \frac{10}{5}$



Function : Linear

Equation:  $y = 2x - 2$   
 $y = mx + b$

4.  $3(y - 1) = 6x + 9$



Function : Linear

Equation:  $y = 2x + 4$   
 $y = mx + b$