

5.7.2 Optional Lab: Managing Device Drivers with Device Manager in Windows 7

Introduction

Print and complete this lab.

In this lab, you will use Windows Device Manager to gather information about different drivers and learn how Device Manager manages drivers.

Recommended Equipment

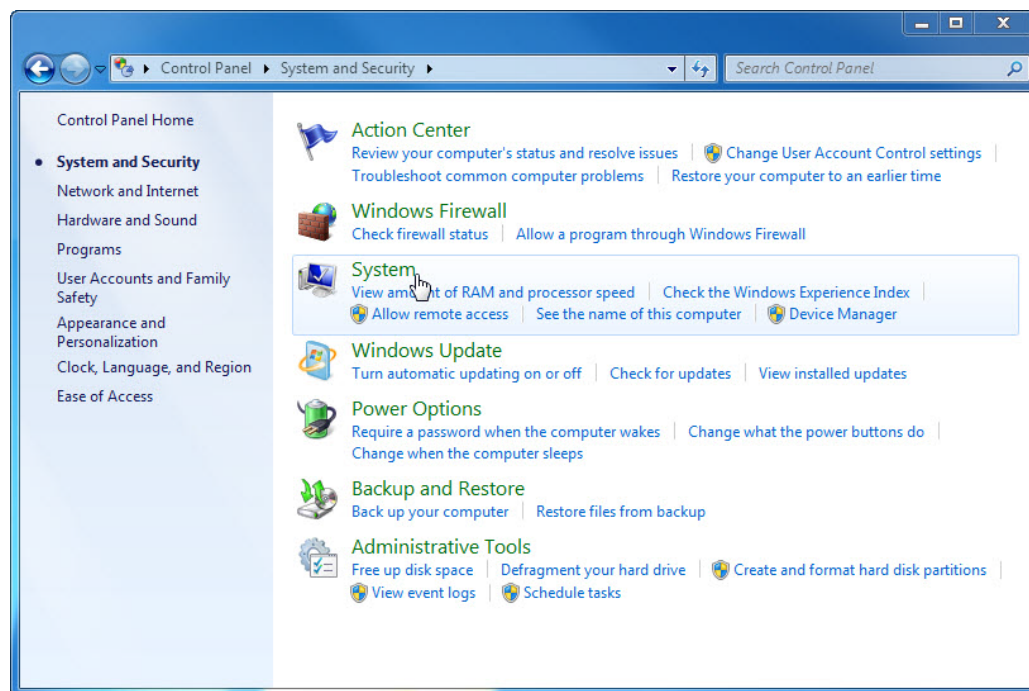
The following equipment is required for this exercise:

- A computer running Windows 7

Step 1

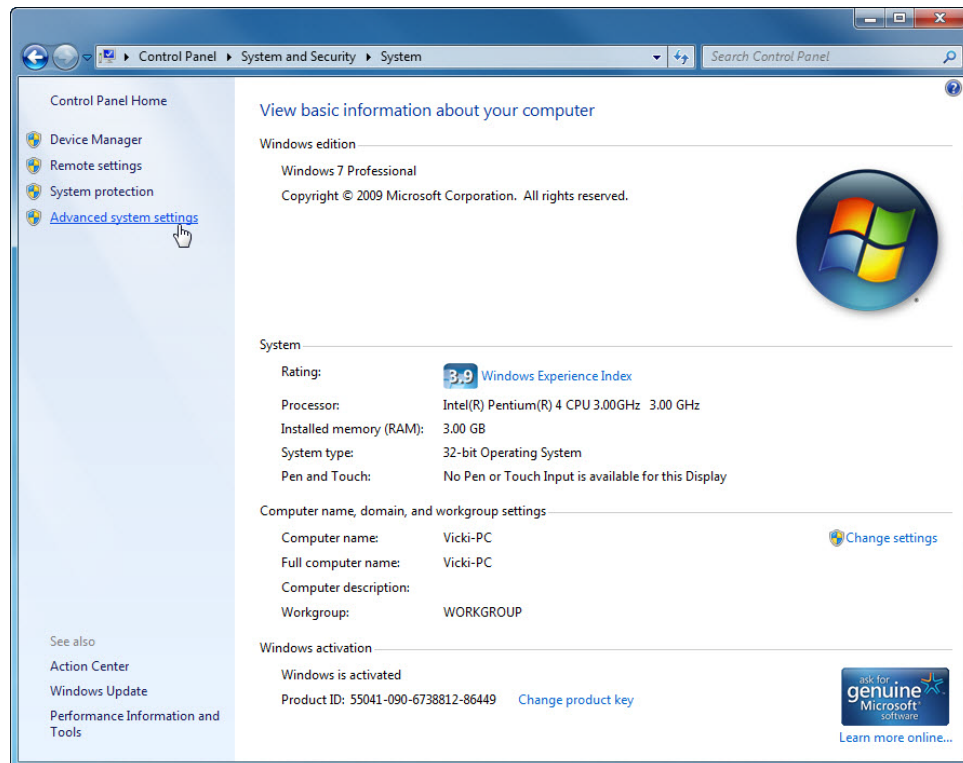
Log on to the computer as an administrator.

Navigate to the “Control Panel” by clicking **Start > Control Panel > System and Security**. Click the **System** link.

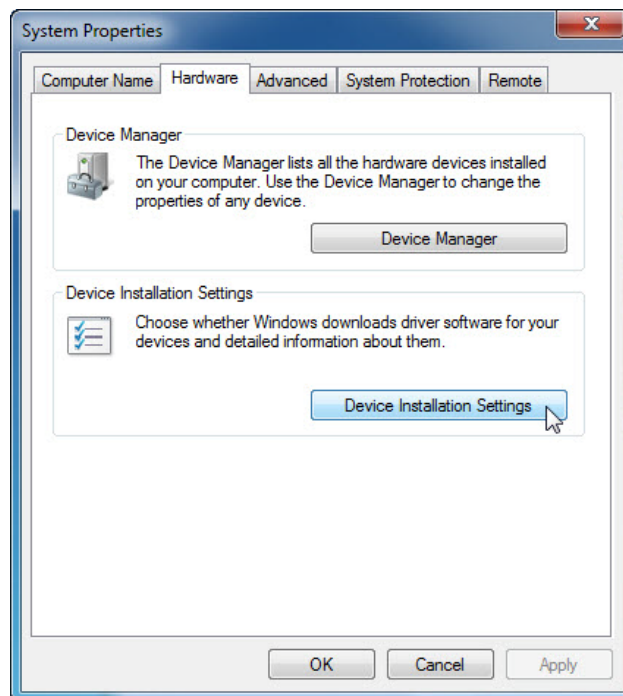


Step 2

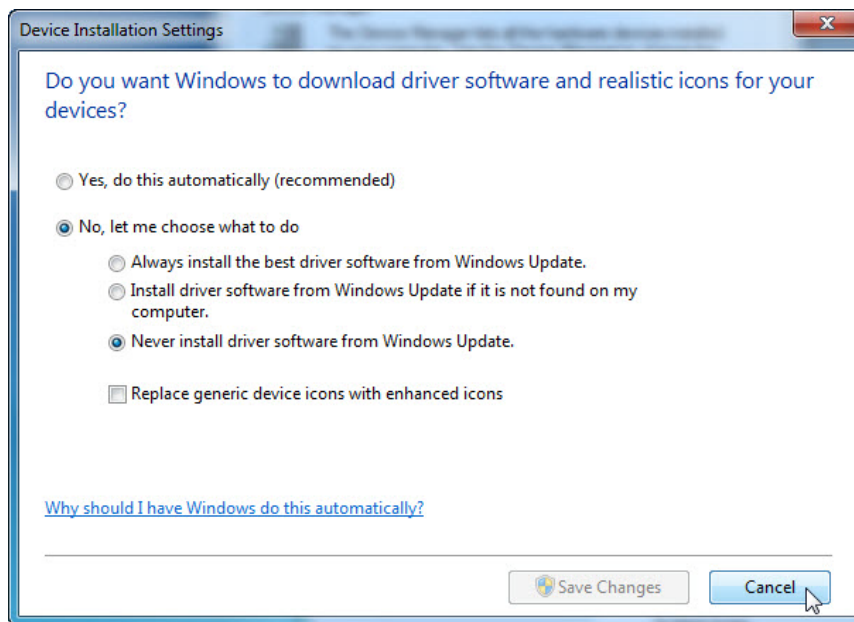
The “System” window appears. In the left pane, click **Advanced system settings**.



The “System Properties” window appears. Open “Device Installation Settings” by clicking the **Hardware** tab > **Device Installation Settings** button.

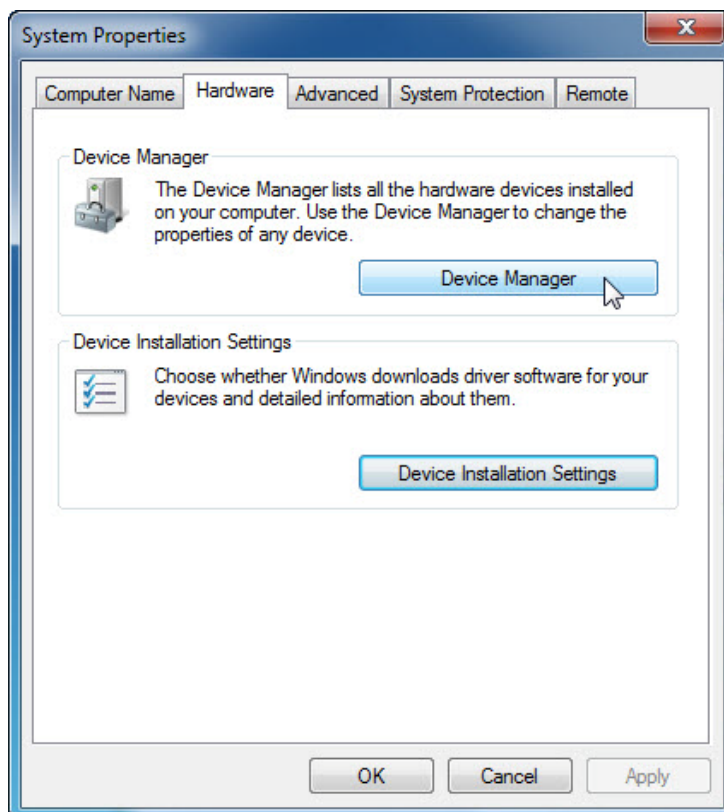


Accept the default setting and click **Cancel**.



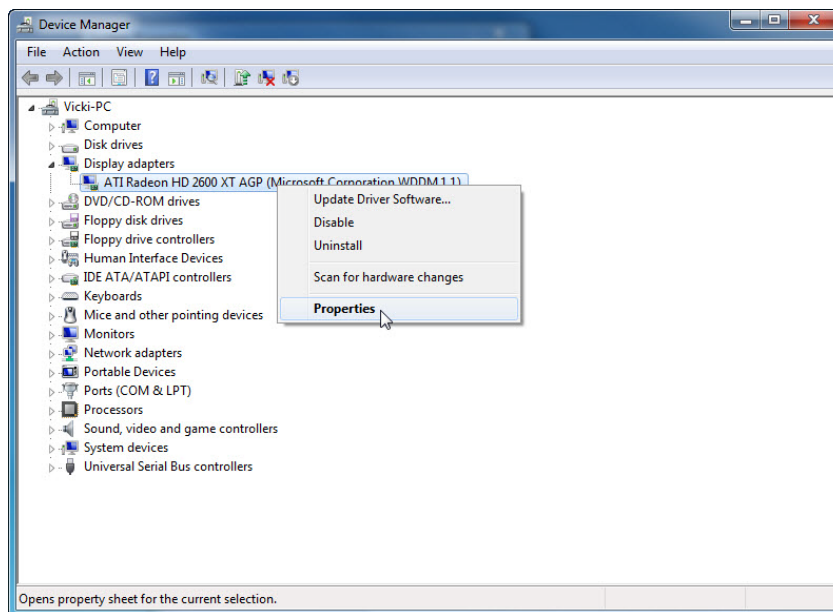
Step 3

Click the **Device Manager** button.

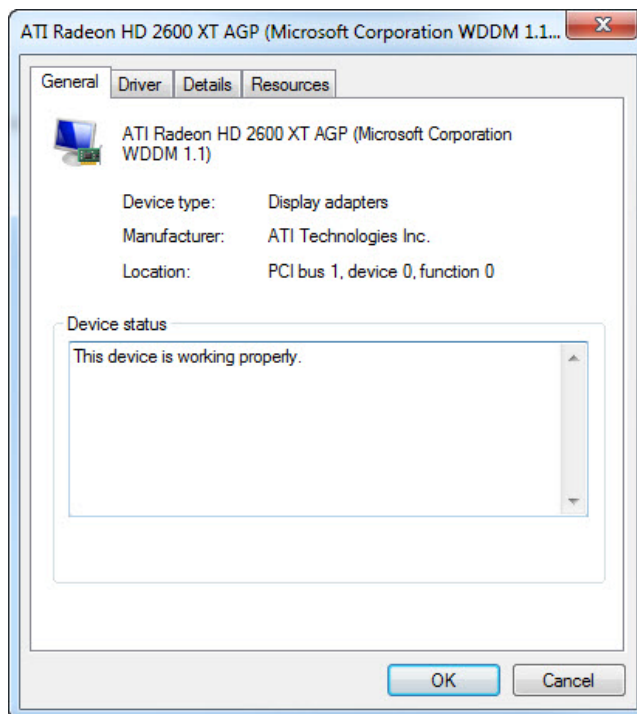


Step 4

Click the **arrow** next to Display adapters. Right-click the adapter name and select **Properties**.

**Step 5**

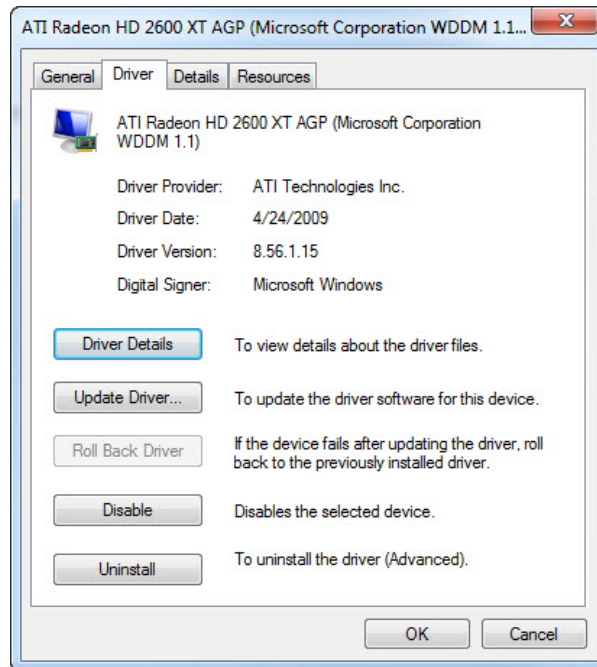
The “Display adapters Properties” window appears.



What information is displayed under the General tab?

Step 6

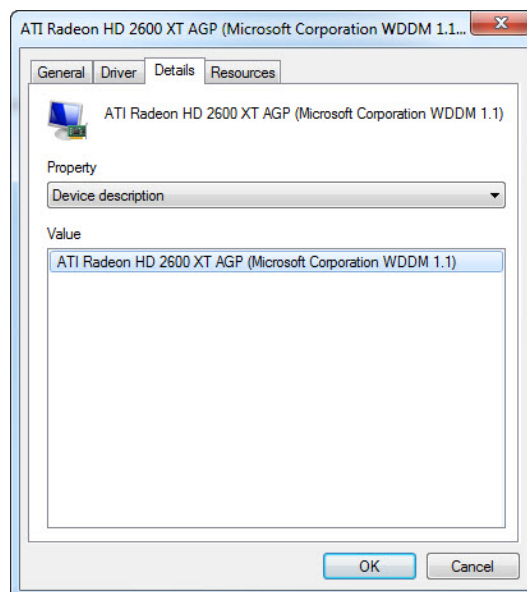
Click the **Driver** tab.



What functions can you accomplish from this page?

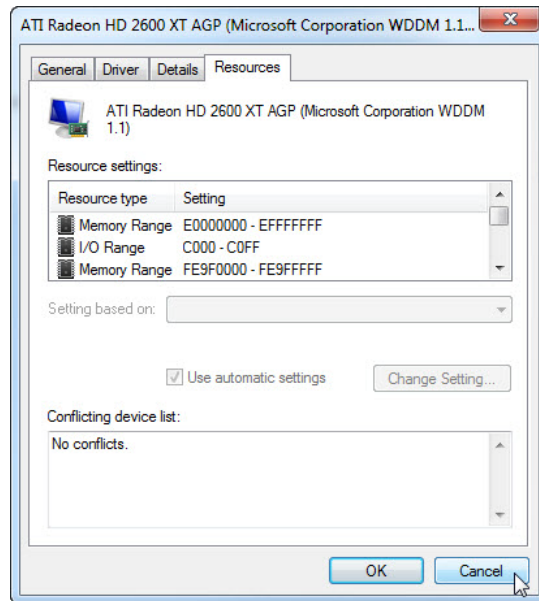
Step 7

Click the **Detail** tab. This tab provides more details about the hardware.



Step 8

Click the **Resource** tab.

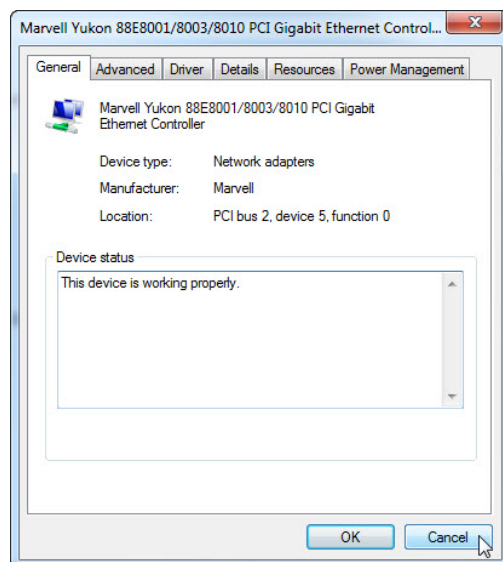


What information is displayed under the Resource tab? Answers may vary.

Close the “Display adapters Properties” windows, click **Cancel**.

Step 9

Navigate to the “Network adapter Properties” window by clicking the **arrow** next to Network adapters > right-click the adapter name > select **Properties**.



Which tabs are available?

Are there any extra tabs?

What is the purpose of the extra tabs?

Close the “Network adapters Properties” windows, click **Cancel**.
Close all windows and log off.