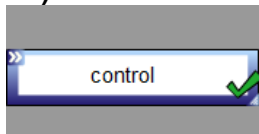


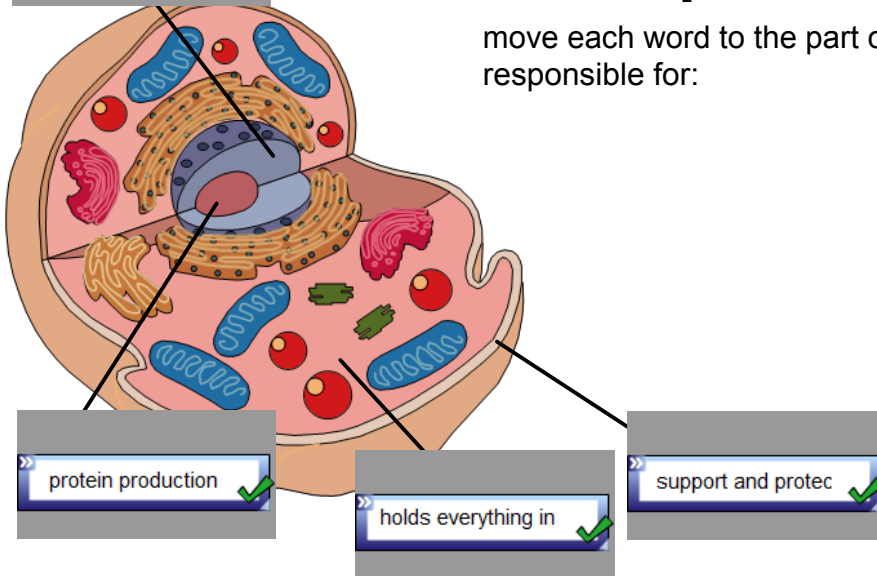
Feb 14, 2012

1) Cellular Organelles cont



Warm-Up

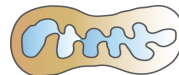
move each word to the part of the cell responsible for:



Cell Organelles:

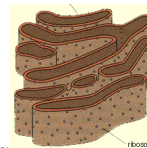
1. Mitochondria

- jelly-bean shaped
- "powerhouses" of the cell; break down glucose (sugar) to get energy that is used by the cell



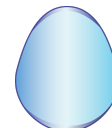
2. Endoplasmic Reticulum

- network of tubes inside the cell
- "highway system"; allows various substances to move throughout the cell



3. Vacuoles

- medium to large balloon like structures
- "storage bins"; acts as a storage area for water, nutrients, waste, etc.
- in plants, a vacuole is very large and filled with water to help the cell keep its shape

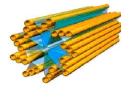


4. Ribosomes

- small, round structures
- "factories"; make proteins for the cell

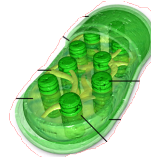
5. Centrioles

- small, rod-shaped
- found in animal cells ONLY; are necessary for cell reproduction



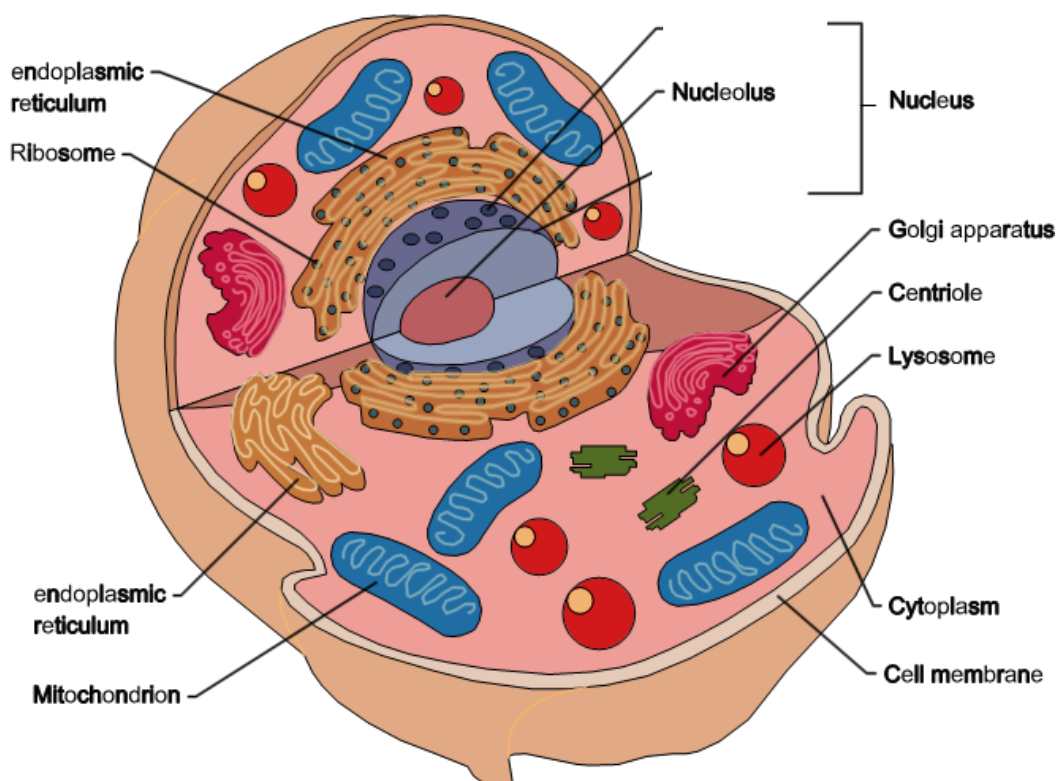
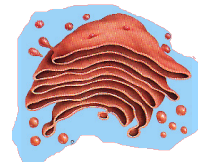
6. Chloroplasts

- oval-shaped, green structures
- found in plant cells ONLY; stores chlorophyll which is used for photosynthesis

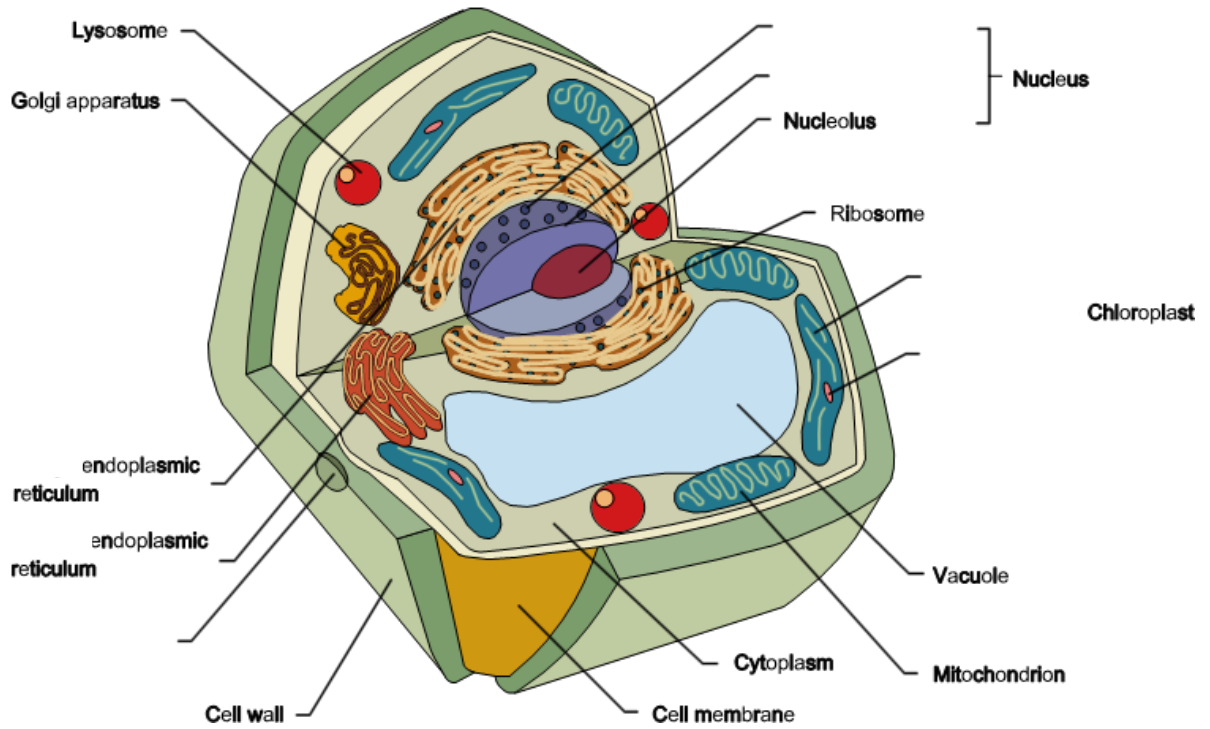
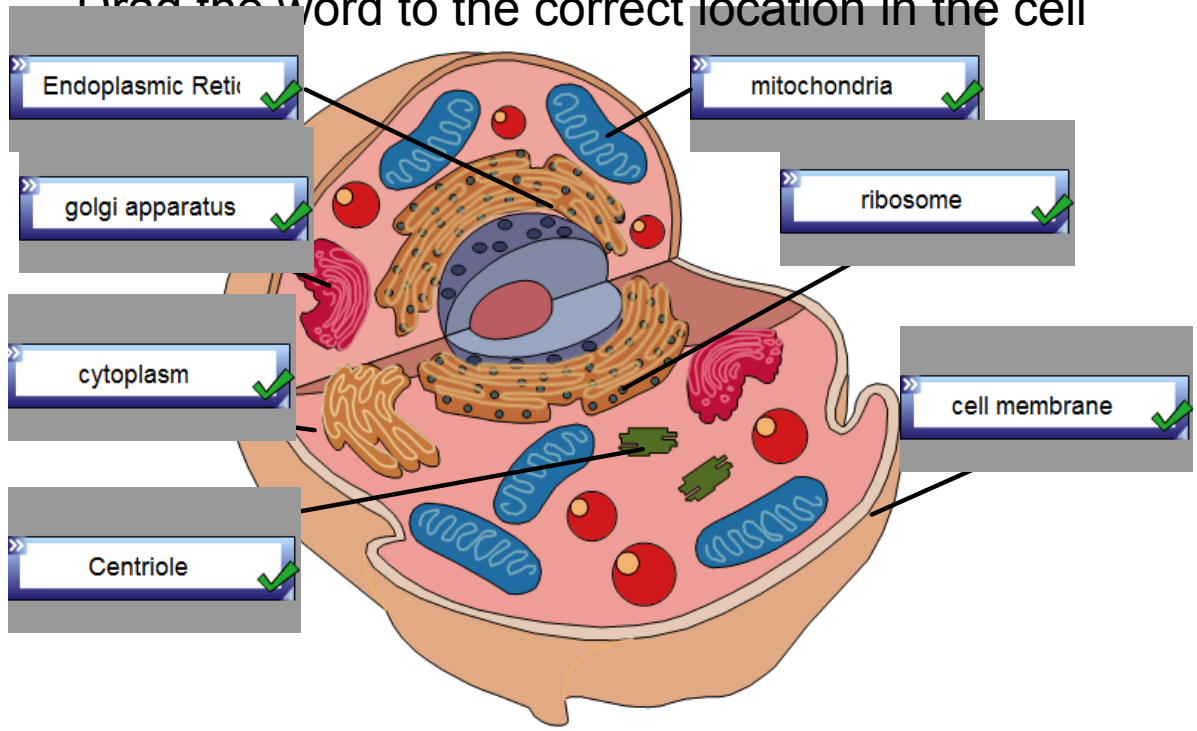


7. Golgi

- stacks of flattened membranes
- sorts and modifies proteins
- "quality control"



Drag the word to the correct location in the cell



pg 64 #6-9

Attachments

Cell_Parts_in_Plants_and_Animals.asf

Introducing_the_Cell.asf