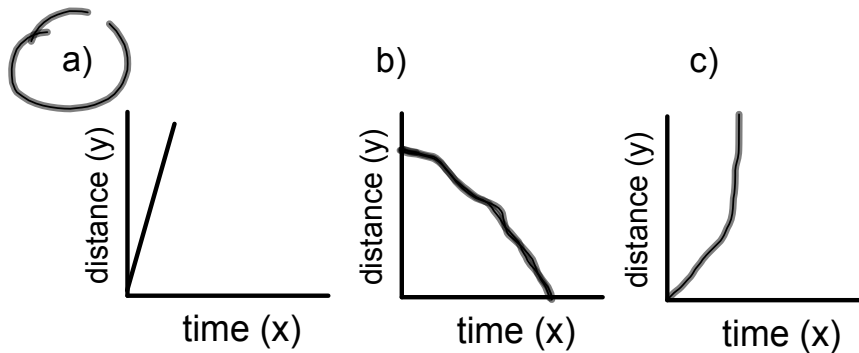


# Friday Feb 17, 2012

continue with distance-time graphs

## Warm -Up

Which of the following graph(s) shows that the object is travelling at a constant speed?

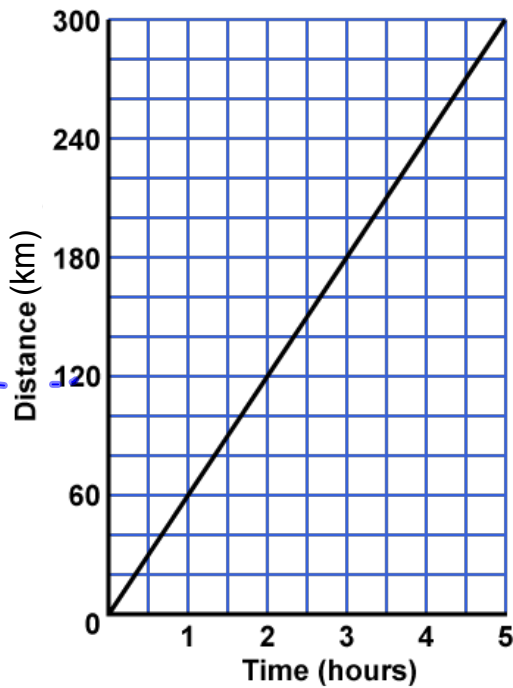


## Calculating Speed

To calculate the actual speed on a distance time graph you calculate the slope. Slope can be calculated using the following formula(s).

$$v = \frac{\text{rise}}{\text{run}} = \frac{d_2 - d_1}{t_2 - t_1} = \frac{y_2 - y_1}{x_2 - x_1}$$

## Interpreting a distance-time graph



How long did it take to drive 300 kilometers?

ANSWER

5 hours

How far did the car travel in 3 1/2 hours.

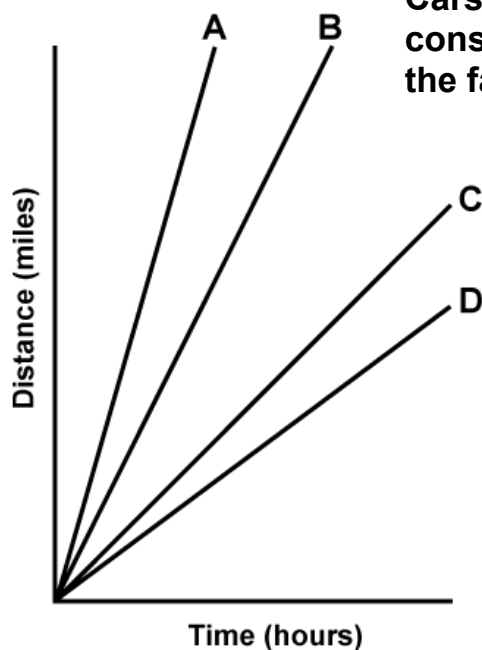
ANSWER

210 km

What was the average speed for the journey?

ANSWER

60 km/h



Cars A, B, C, and D are all traveling at a constant speed, which car is traveling at the fastest speed?

ANSWER

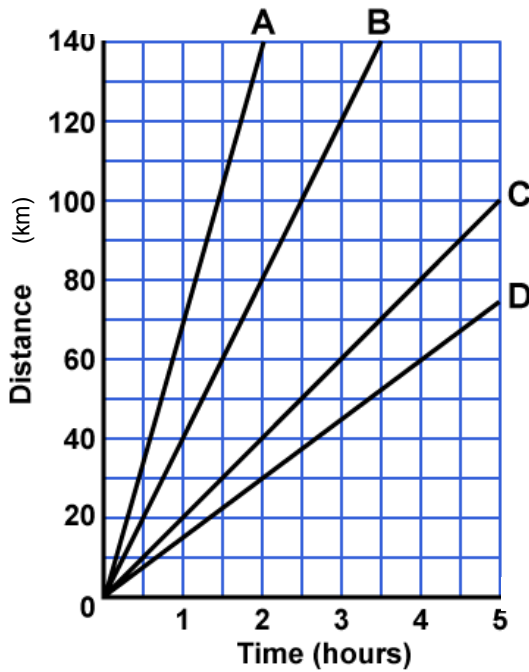
Car A

Which car is the slowest?

ANSWER

Car D

## Interpreting a Distance-time graph



At what speed is car A traveling?

**ANSWER** 70 km/h

At what speed is car D traveling?

**ANSWER** 15 km/h

At what speed is car C travelling?

**ANSWER** 20km/h

Complete the following questions:

pg 365 #1,2,6

Graphing Worksheet 1

## Attachments

---

average speed ex 1.notebook

average speed ex 2 answers.notebook