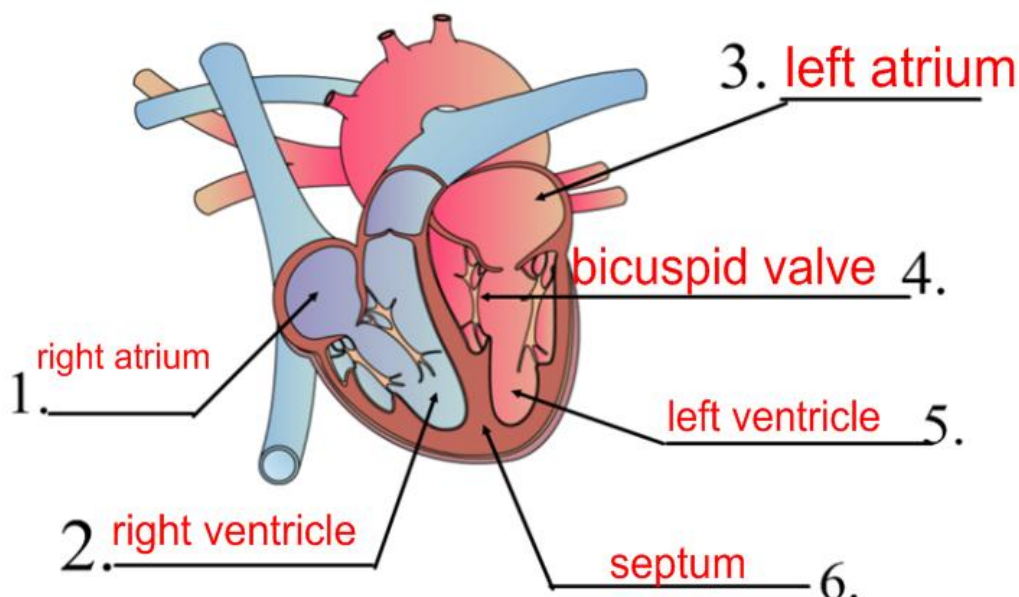


Part A: Label the following Diagram



Part B: Ordering

1. Place the following words in the correct order as pulmonary circulation occurs. Start when deoxygenated blood enters the heart from the body.

- 4 Pulmonary Arteries
- 3 Right Ventricle
- 2 tricuspid valve
- 5 Lungs
- 6 Pulmonary Veins
- 1 Right Atrium

2. Place the following words in the correct order as systemic circulation occurs. Start when the oxygenated blood enters the heart from the lungs.

- 3 Left Ventricle
- 6 Body
- 1 Left Atrium
- 5 various arteries
- 7 various veins
- 2 bicuspid valve
- 4 aorta

Part C: Matching: Match each of the following with their description:

- | | |
|-------------------------------|---|
| 1. Platelets <u>E</u> | a. carries oxygen to your cells and carbon dioxide away. |
| 2. White blood cells <u>F</u> | b. occurs when part of your heart does not receive oxygen |
| 3. Artherosclerosis <u>G</u> | c. a disease that occurs when you have too few RBC |
| 4. Leukemia <u>H</u> | d. the liquid part of blood |
| 5. Plasma <u>D</u> | e. part of blood that promotes clotting |
| 6. Red blood cells <u>A</u> | f. protects against disease |
| 7. Anemia <u>C</u> | g. disease caused by cholesterol blocking your arteries |
| 8. Heart attack <u>B</u> | h. cancer of the blood |

Part D: State whether each statement is describing a vein (V), artery (A) or capillary (C).

- Blood travels through it at high pressure A
- Carries oxygenated blood away from the heart A
- Thick muscular elastic walls A
- Blood travels through at low pressure V
- Connects arteries and veins C
- Red blood cells can only fit through one at a time C

Part E: Fill in the blanks

1. This blood type is the universal donor O
2. If you have blood type B your blood contains the antibody anti B
3. Your circulatory system is a(an) closed system because blood cannot enter or be removed from it.
4. The ventricles ship/pump blood out of the heart into the lungs and the rest of the body.
5. If blood was not flowing properly to your lungs it would be a problem with your pulmonary circulatory system.
6. The left side of your heart pumps blood to your body.