

Unit 1: Cell Review

1. State which cell (animal/plant) this structure is found in as well as its function:

Cell Membrane
Cell Wall
Vacuole
Chloroplast

Nucleus
Nucleolus
Cytoplasm
Centriole

Mitochondria
Endoplasmic Reticulum
Ribosome

2. Fill in the blanks (cell review)

The passage of water in and out of cells is called _____.

In _____ cells identical to the parent cell are formed.

Each human body contains two sets of _____ chromosomes.

The shape of a cell is adapted to its _____.

Meiosis has _____ cell division (s).

Chromosome numbers are _____ during Meiosis.

When there are more solutes outside the cell than inside the cell the cell will _____.

Where there are less solutes inside the cell than outside the cell the cell will _____.

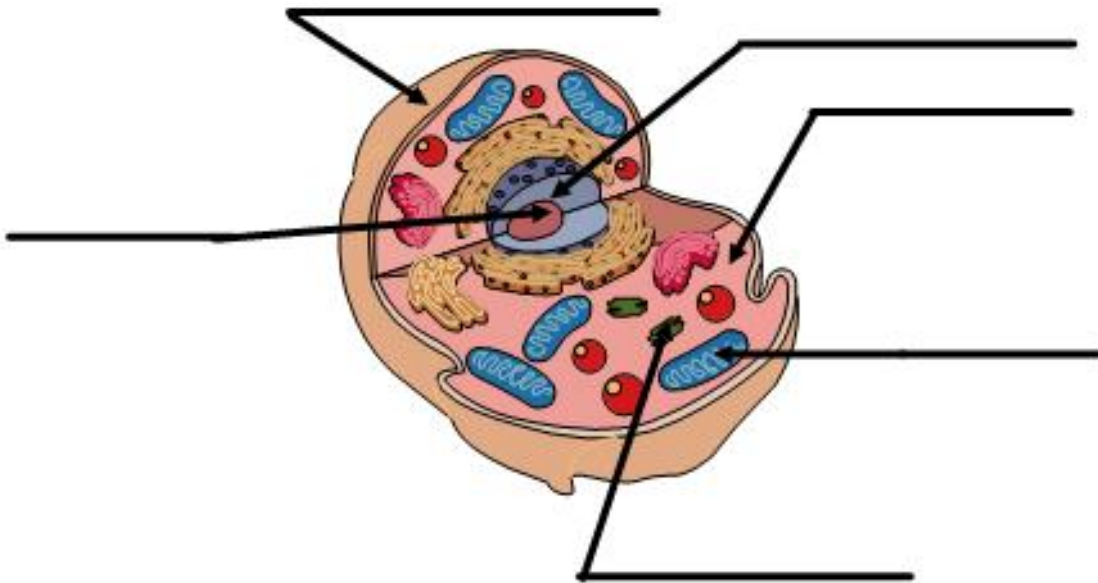
The original cell in reproduction is called a _____ cell.

The end product in cellular reproduction is called the _____ cell.

_____ and _____ decide what moves through a cell membrane.

The passage of molecules in and out of cell is called _____.

3. Label each part of the cell by filling in the blank spaces.



4. Place the following in the correct order by placing the numbers 1,2,3,4.... In the space provided

- _____ paired chromosomes are pulled apart on opposite ends of the cell
- _____ chromosomes pair
- _____ cell divides into 2 daughter cells
- _____ paired chromosomes line up in middle

5. Answer each of the following questions by placing a T or an F in the space provided.

- a. A cell is the basic unit of structure and function in living things. _____
- b. Botanists study cells _____
- c. Ribosomes are the storage bins of the cell. _____
- d. Meiosis results in two cells that have identical chromosomes _____
- e. The cell membrane is a nonliving part of the cell. _____
- f. Mitochondria help to make proteins in the cell _____

6. Answer each of the following short answer questions:

- a. Describe what happens when a normal cell is placed in a concentrated (*lots of sugar*) solution.
Does water move in or out?
- b. Describe what happens when a normal cell is placed in a very dilute (*lots of water*) solution.
Does water move in or out?
- c. How is meiosis different from mitosis?