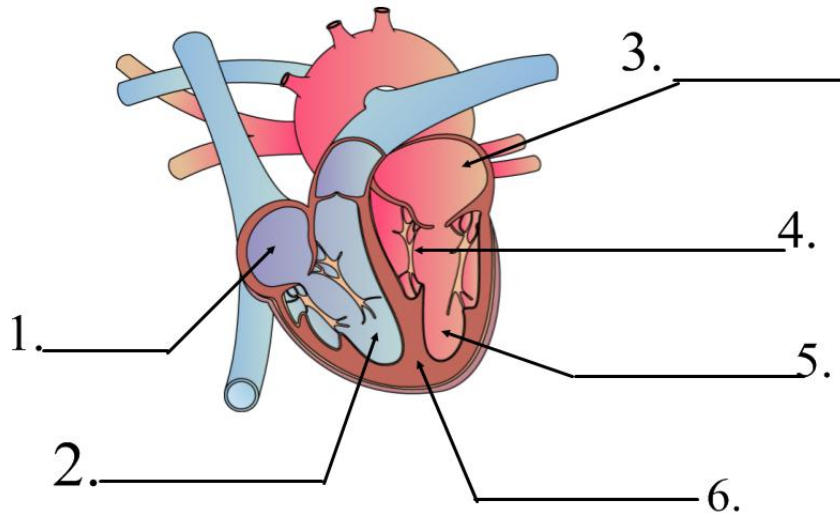


Biology113: Exam Review
Unit 4: Circulation

Part A: Label the following Diagram



Part B: Ordering

Part 1. Place the following words in the correct order as pulmonary and systemic circulation occur. Start with blood entering the right atrium then going to the lungs to pick up oxygen and then moving out to the body.

Part 2. On the right side of each of the following place a NO for those that do not contain oxygen and an O for those that do contain oxygen.

Part 1: Numbered	Part 2: O/NO
_____ Right Ventricle	_____
_____ Left Ventricle	_____
_____ Aorta	_____
_____ Pulmonary Artery	_____
_____ Tricuspid Valve	_____
_____ Various Arteries	_____
_____ Right Atrium	_____
_____ Left Atrium	_____
_____ Bicuspid Valve	_____
_____ Various Veins	_____
_____ Pulmonary Veins	_____
_____ Body	_____
_____ Lungs	_____

Part C: Matching: Match each of the following with their description:

- | | |
|----------------------------|---|
| 1. Platelets _____ | a. carries oxygen to your cells and carbon dioxide away. |
| 2. White blood cells _____ | b. occurs when part of your heart does not receive oxygen |
| 3. Artherosclerosis _____ | c. a disease that occurs when you have too few RBC |
| 4. Leukemia _____ | d. the liquid part of blood |
| 5. Plasma _____ | e. part of blood that promotes clotting |
| 6. Red blood cells _____ | f. protects against disease |
| 7. Anemia _____ | g. disease caused by cholesterol blocking your arteries |
| 8. Heart attack _____ | h. cancer of the blood |

Part D: State whether each statement is describing a vein (V), artery (A) or capillary (C).

- Blood travels through it at high pressure
- Carries oxygenated blood away from the heart
- Thick muscular elastic walls
- Blood travels through at low pressure
- Connects arteries and veins
- Red blood cells can only fit through one at a time

Part E: Fill in the blanks

1. This blood type is the universal donor _____
2. If you have blood type B your blood contains the antibody anti _____
3. Your circulatory system is a(an) _____ system because blood cannot enter or be removed from it.
4. The _____ ship/pump blood out of the heart into the lungs and the rest of the body.
5. If blood was not flowing properly to your lungs it would be a problem with your _____ circulatory system.
6. The _____ side of your heart pumps blood to your body.