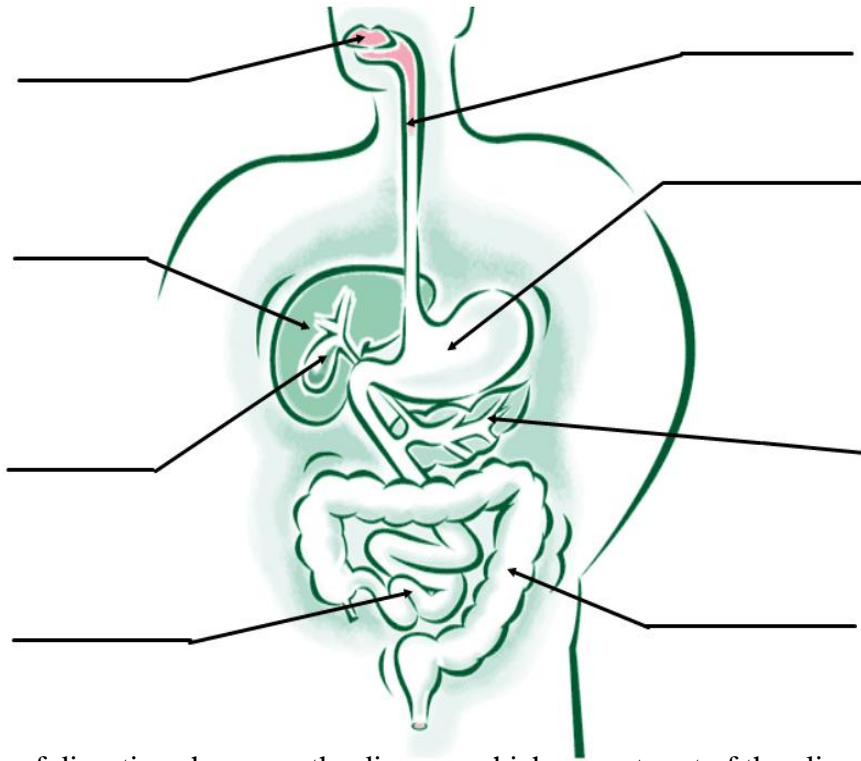


Bio 113: Exam Review  
Unit 3: Digestion

**Part A: Label the following diagram:**



List the organs of digestion shown on the diagram which are not part of the alimentary (digestive) canal)

**Part B: Fill in the word that would fit in the blank:**

1. The \_\_\_\_\_ is a long muscular tube the connects the mouth to the stomach
2. Bile is produced in the \_\_\_\_\_
3. Food enters the digestive system through the \_\_\_\_\_
4. \_\_\_\_\_ is the most common digestive problem
5. \_\_\_\_\_ causes juices from the stomach to go up into the esophagus
6. \_\_\_\_\_ effect is watery wastes.
7. \_\_\_\_\_ can be caused when there are too many salts in your body. It can cause your skin to appear a yellow color.
8. When the protective digestive lining of the stomach is broken down these can form \_\_\_\_\_.

**Part C: Answer each of the following questions in sentence form.**

1. How does food move through the digestive system?
2. Where is bile produced? Where is it stored?
3. What prevents food from entering the windpipe when you swallow?
4. In what organ does food get absorbed into the blood stream?
5. Describe the function of saliva. Where is it produced?

**Part D: Identify the word or term that does not belong and explain why it does not belong**

1. Alimentary canal, mouth, liver
2. Enzymes, mechanical digestion, chemical digestion
3. esophagus, peristalsis, mouth
4. gallbladder, saliva, mouth, enzymes.