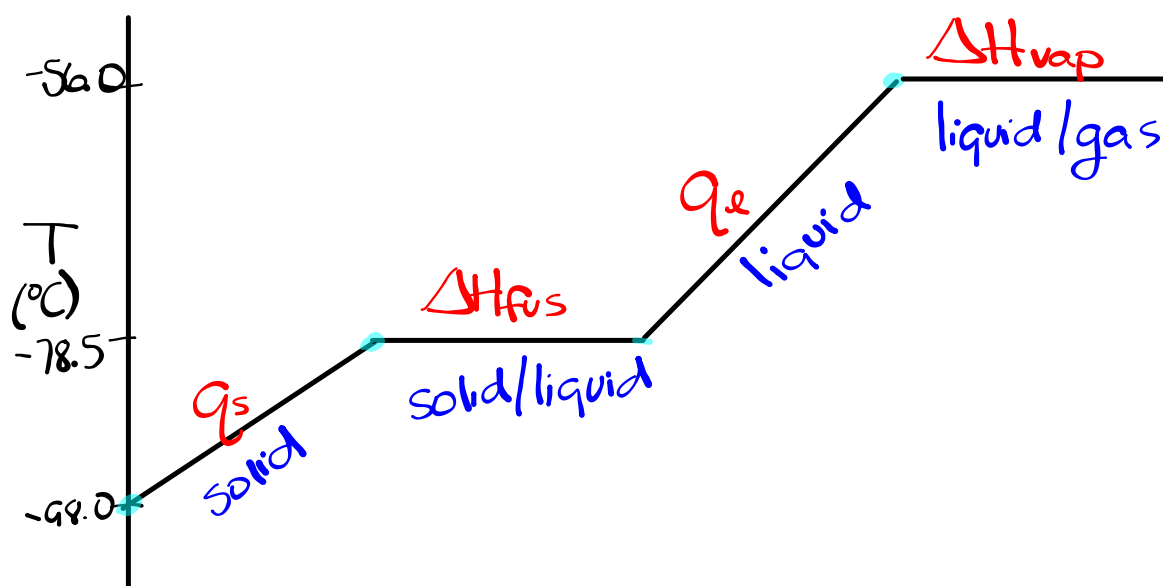


Warm Up

Solid carbon dioxide, at a temperature of $-98.0\text{ }^{\circ}\text{C}$ is heated until it becomes a gas at its boiling point ($-56.0\text{ }^{\circ}\text{C}$). Draw the heating curve. The melting point is $-78.5\text{ }^{\circ}\text{C}$.



Total Energy Changes

Worksheet 55

