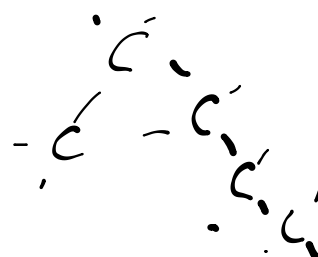
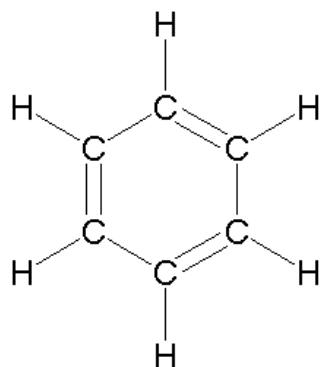
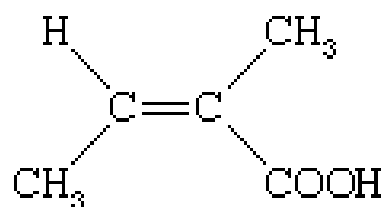
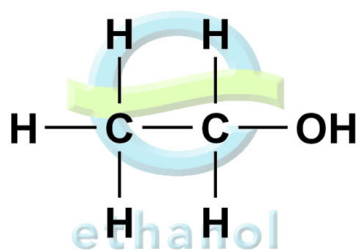
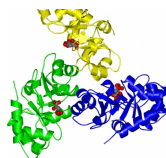
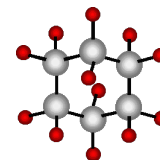


What is special about these molecules?





Organic Chemistry



Organic chemistry is the study of the molecular compounds of carbon. The properties of organic compounds depends upon the covalent bonding within the molecules (electronegativity difference less than 1.67).

Oxides of carbon, compounds of carbonate (CO_3^-), bicarbonate (HCO_3^-), cyanide (CN^-), cyanate (CNO^-) and thiocyanate (SCN^-) are not classified as organic compounds.

The number and variety of organic compounds is much greater than inorganic compounds due to:

- the ability of organic compounds to form isomers
- the intermediate **electronegativity** of carbon allows it to bond to metals and non- metals.

Organic compounds tend to have a larger molecular mass and radius due to the catenation (chain linking) of carbon atoms.

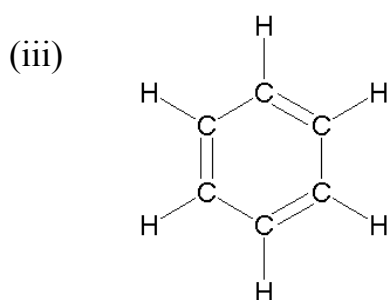
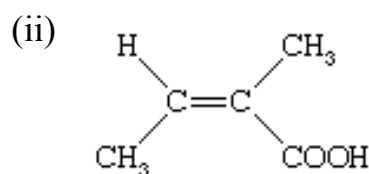
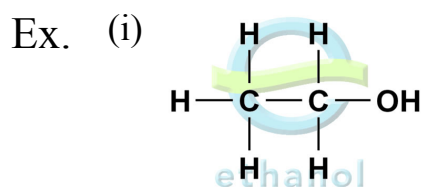
Variety of organic compounds is influenced by:

(i) carbon's ability to form **4 hybridized bonds** (bonding capacity)

IMPORTANT

(ii) carbon's ability to form double and triple bonds

(iii) carbon's ability to form chains and cyclic compounds



≥ 2.0
IONIC

C : F
2.5 4.0

0.7 4.0

Table 6.2**Electronegativity Values for Selected Elements**

H 2.1						
Li 1.0	Be 1.5	B 2.0	C 2.5	N 3.0	O 3.5	F 4.0
Na 0.9	Mg 1.2	Al 1.5	Si 1.8	P 2.1	S 2.5	Cl 3.0
K 0.8	Ca 1.0	Ga 1.6	Ge 1.8	As 2.0	Se 2.4	Br 2.8
Rb 0.8	Sr 1.0	In 1.7	Sn 1.8	Sb 1.9	Te 2.1	I 2.5
Cs 0.7	Ba 0.9	Tl 1.8	Pb 1.9	Bi 1.9		

Structural Models and Diagrams

A variety of models exist to communicate how atoms are bonded to form molecules. These types of models include:

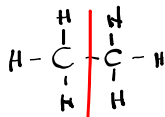
Molecular formula - works well for small, simple molecules.

As the number of atoms increase, less is known about the structure of the molecule.

Ex. H_2O , CH_4 , C_2H_6 **Count the atoms!**

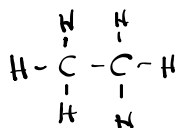
Expanded molecular formula - shows the arrangement of atoms within a molecule

Ex. CH_3CH_3



Complete structural diagram - shows all atoms and bonds

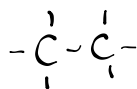
Ex.



Bonding Capacity Review

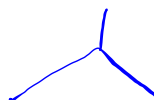
Condensed structural diagram - shows the C-C bonds, but omits the C-H bonds

Ex.



Line Diagram - shows bonds, but no atoms. The end of each line segment represent a C atom.

Ex.

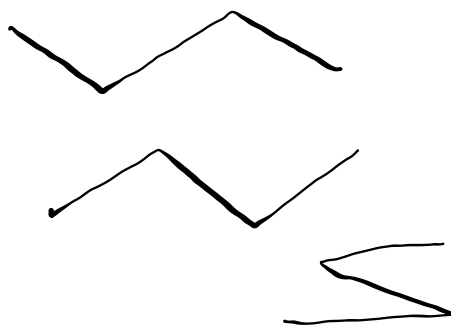
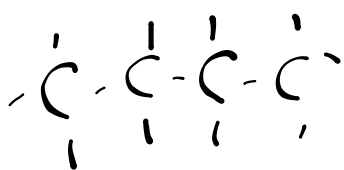
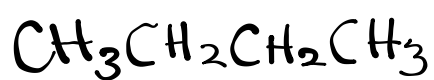
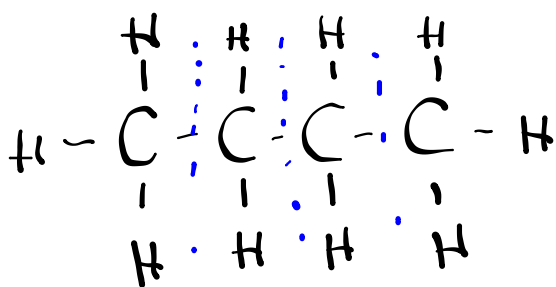
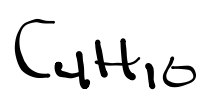


**** Isomers - compounds with the same molecular formula, but different structures****

Ex. C_4H_{10}

How many isomers can be drawn for C_2H_6 ?

For C_5H_{12} ?



Homework

Structural Diagram worksheet