

Warm Up for Quiz



1. Circle the equivalent fractions.

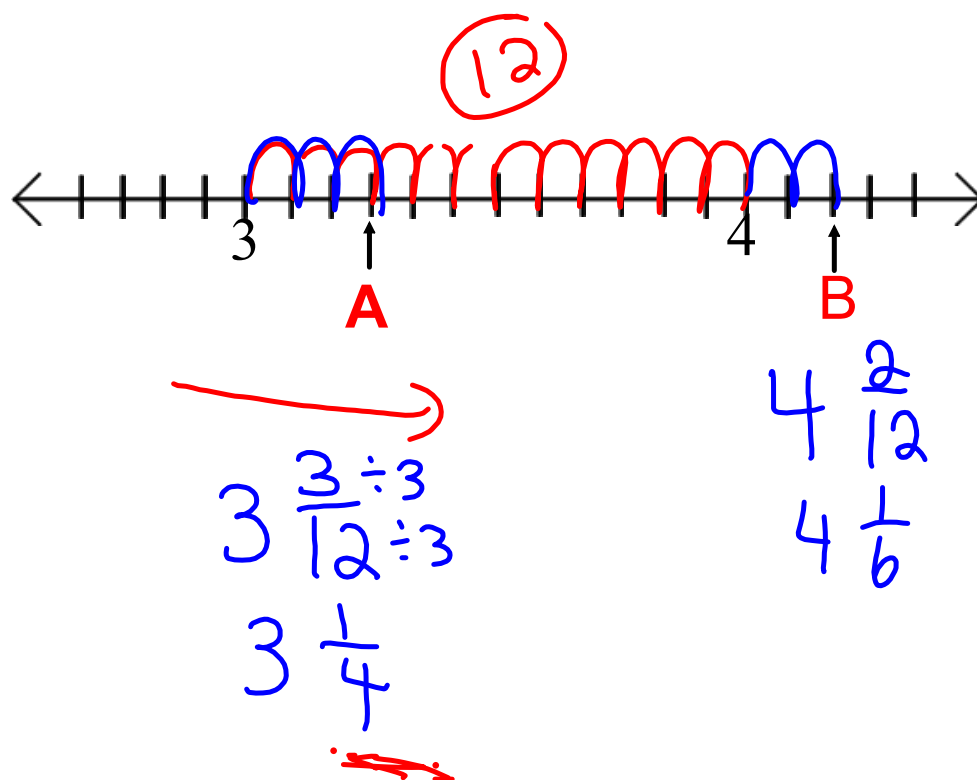
a) $\frac{4}{-5}$ $\frac{5}{4}$ $\frac{-4}{5}$ $\frac{-4}{-5}$ $\frac{-5}{4}$ $\frac{4}{-5}$

$\frac{-4}{5}$
 $\frac{5}{4}$
 $\frac{-4}{5}$
 $+\frac{4}{5}$
 $\frac{-5}{4}$
 $\frac{-4}{5}$

b) $\frac{7}{-6}$ $\frac{14 \div 2}{12 \div 2}$ $\frac{-7}{-6}$ $\frac{7}{6}$ $\frac{-14 \div 2}{-12 \div 2}$ $\frac{21 \div 3}{18 \div 3}$

$\frac{-7}{6}$
 $\frac{7}{6}$
 $+\frac{7}{6}$
 $\frac{7}{6}$
 $+\frac{7}{6}$
 $\frac{7}{6}$

Using the number line, find the value of A & B.



Write two rational numbers between:

a) -3.46 $\overset{-3.4011111111111111}{\uparrow}$ -3.42 , -3.43 -3.40

b) $\frac{3}{5}$ _____ , _____ $\frac{4}{5}$

No Decimals

$$\frac{3 \times 4}{5 \times 4}$$

$$\frac{4 \times 4}{5 \times 4}$$

$$\frac{12}{20} \quad \frac{13}{20} \quad \frac{14}{20} \quad \frac{15}{20} \quad \frac{16}{20}$$

Express each statement as a rational number.

a) Troy ate 6 of the 7 pieces of pie. $\frac{6}{7}$

b) Jennifer read the thermometer that stated it was 14 below zero.

-14

Funwork

Page 112

5, 6, 7, 8, 13, 14