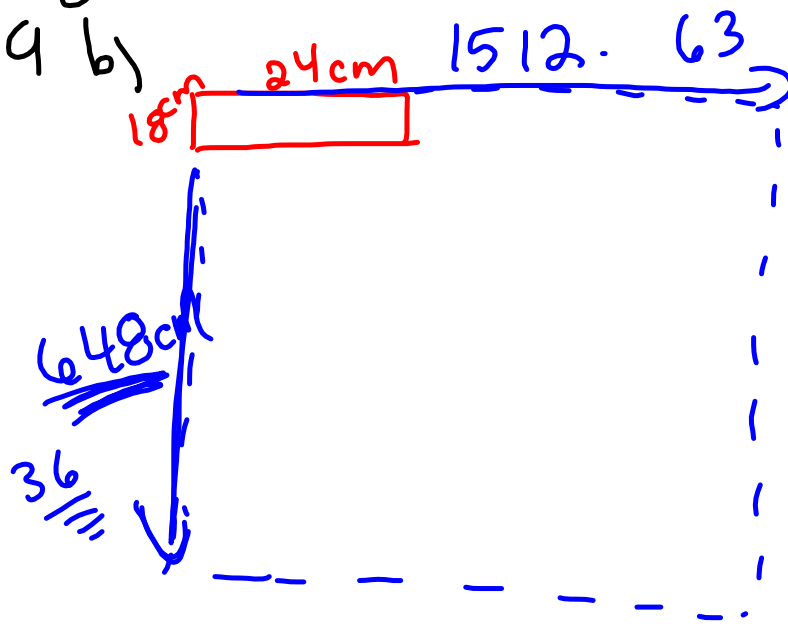


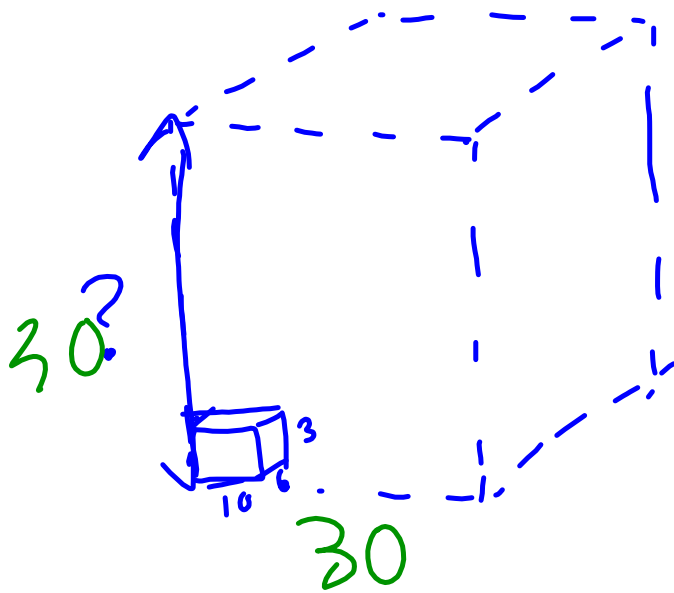
Pg. 140

19 b)



6.48^{m} by 15.12^{m}
 64.8^{cm} by 1512^{cm}

22.



LCM

$$10 \rightarrow 2 \times 5 = 2^1 \times 5^1$$

$$6 \rightarrow 2 \times 3 = 2^1 \times 3^1$$

$$3 \rightarrow 3 = 3^1$$

$$2 \times 3 \times 5$$

$$30$$