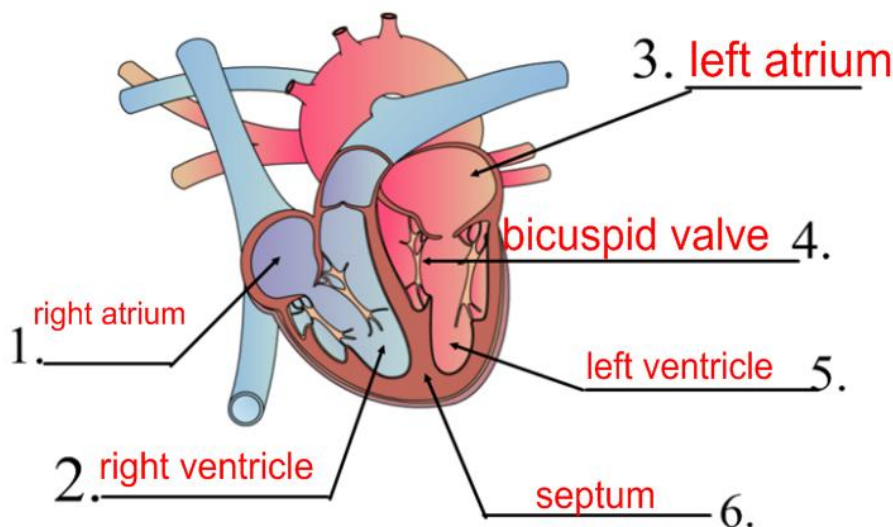


**Part A: Label the following Diagram**



**Part B: Ordering**

Part 1. Place the following words in the correct order as pulmonary and systemic circulation occur. Start with blood entering the right atrium then going to the lungs to pick up oxygen and then moving out to the body.

Part 2. On the right side of each of the following place a NO for those that do not contain oxygen and an O for those that do contain oxygen.

Part 1: Numbered	Part 2: O/NO
<u>3</u> Right Ventricle	<u>NO</u>
<u>9</u> Left Ventricle	<u>O</u>
<u>10</u> Aorta	<u>O</u>
<u>4</u> Pulmonary Artery	<u>NO</u>
<u>2</u> Tricuspid Valve	<u>NO</u>
<u>11</u> Various Arteries	<u>O</u>
<u>1</u> Right Atrium	<u>NO</u>
<u>7</u> Left Atrium	<u>O</u>
<u>8</u> Bicuspid Valve	<u>O</u>
<u>13</u> Various Veins	<u>NO</u>
<u>6</u> Pulmonary Veins	<u>O</u>
<u>12</u> Body	<u>NO</u>
<u>5</u> Lungs	<u>O</u>

**Part C: Matching: Match each of the following with their description:**

- |                               |   |
|-------------------------------|---|
| 1. Platelets <u>E</u>         | a. carries oxygen to your cells and carbon dioxide away.  |
| 2. White blood cells <u>F</u> | b. occurs when part of your heart does not receive oxygen |
| 3. Artherosclerosis <u>G</u>  | c. a disease that occurs when you have too few RBC        |
| 4. Leukemia <u>H</u>          | d. the liquid part of blood                               |
| 5. Plasma <u>D</u>            | e. part of blood that promotes clotting                   |
| 6. Red blood cells <u>A</u>   | f. protects against disease                               |
| 7. Anemia <u>C</u>            | g. disease caused by cholesterol blocking your arteries   |
| 8. Heart attack <u>B</u>      | h. cancer of the blood                                    |

**Part D: State whether each statement is describing a vein (V), artery (A) or capillary (C).**

- |  |          |
|--|----------|
| Blood travels through it at high pressure          | <u>A</u> |
| Carries oxygenated blood away from the heart       | <u>A</u> |
| Thick muscular elastic walls                       | <u>A</u> |
| Blood travels through at low pressure              | <u>V</u> |
| Connects arteries and veins                        | <u>C</u> |
| Red blood cells can only fit through one at a time | <u>C</u> |

**Part E: Fill in the blanks**

- This blood type is the universal donor O
- If you have blood type B your blood contains the antibody anti B
- Your circulatory system is a(an) closed system because blood cannot enter or be removed from it.
- The ventricles ship/pump blood out of the heart into the lungs and the rest of the body.
- If blood was not flowing properly to your lungs it would be a problem with your pulmonary circulatory system.
- The left side of your heart pumps blood to your body.