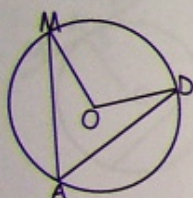
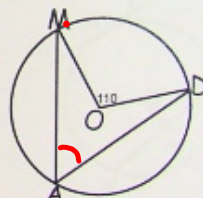


est Review.notebook

May 20,

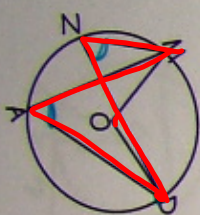


Name the central angle.  $\angle MOD$   
Name the inscribed angle.  $\angle MAD$



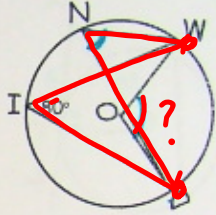
Determine the value of angle MAD.

$55^\circ$



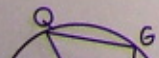
What angles are equal? Name them.

$\angle DAM = \angle DNM$

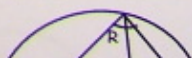


What is the value of angle WOD?  $160^\circ$

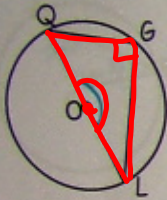
What is the value of angle WND?  $80^\circ$



What is the value of angle

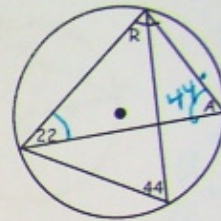


$R = 114^\circ$



What is the value of angle QOL?  $180^\circ$

What is the value of angle QGL?  $90^\circ$



$R = 114^\circ$

$A = 44^\circ$

Name the tangent line. *MT*

What is the point of tangency? *Point A*

What is the measurement of angle TAO? *90°*

Name the chord. *HY*

What is the measurement of angle HZO? *90°*

What do you know about ZH and ZY? *they are equal*

What What

Determine the length of TO.

$c^2 = a^2 + b^2$

$c^2 = 4^2 + 15^2$

$c^2 = 16 + 225$

$\sqrt{c^2} = \sqrt{241}$

$c = 15.5$

Determine the length of TA.

$a^2 = c^2 - b^2$

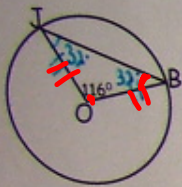
$a^2 = 14^2 - 10^2$

$a^2 = 196 - 100$

$\sqrt{a^2} = \sqrt{96}$

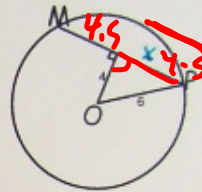
$a = 9.8$





Determine the value of angle JBO.

$$\angle JBO = 32^\circ$$



Determine the length of MP.

$$a^2 = c^2 - b^2$$

$$a^2 = 6^2 - 4^2$$

$$a^2 = 36 - 16$$

$$\sqrt{a^2} = \sqrt{20}$$

$$a = 4.5$$

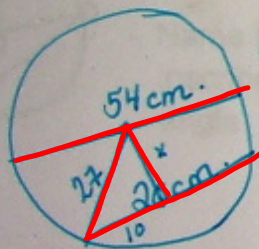
$\times 2$

$$MP = 9$$

Circle Test Review.notebook

May 20,

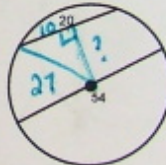
A circle has a diameter of 54cm and a chord that measures 20cm.



$$a^2 = c^2 - b^2$$
$$a^2 = 27^2 - 10^2$$
$$a^2 = 729 - 100$$
$$\sqrt{a^2} = \sqrt{629}$$
$$a = 25.1$$

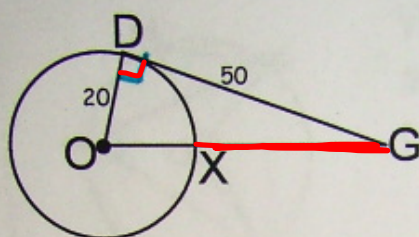
A circle has a diameter of 54cm and a chord that measures 20cm.

How far from the centre of the circle is the chord?



D

What is



What is the length of XG?

$$c^2 = a^2 + b^2$$

$$c^2 = 20^2 + 50^2$$

$$c^2 = 400 + 2500$$

$$\sqrt{c^2} = \sqrt{2900}$$

$$c = 53.9$$

$$-24 \quad 33.9$$