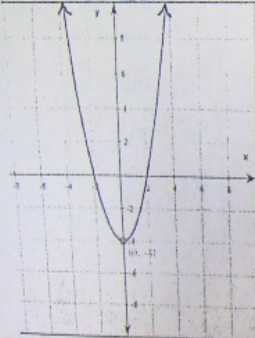
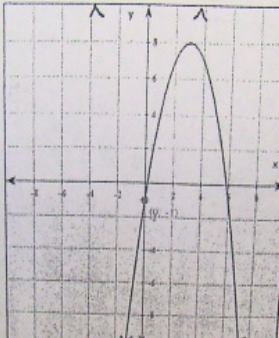
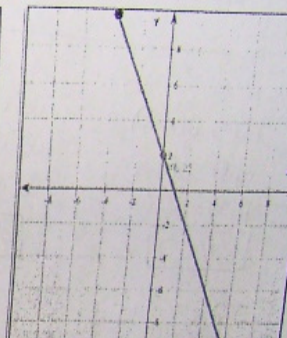
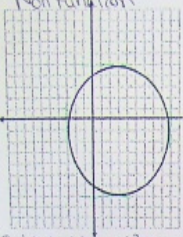
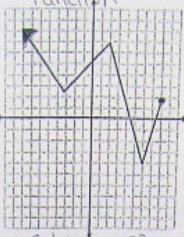



NRF
Relations Check Up

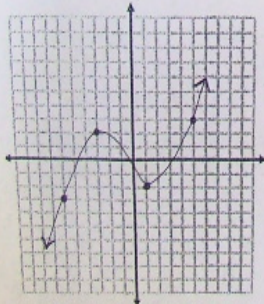
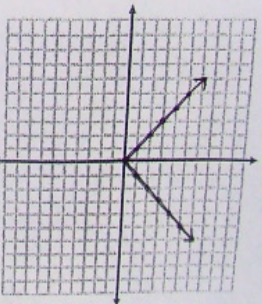
1. Determine the Domain and Range for each of the following: (The graphs count by twos.)

		
<p>Domain: <u>$\{x x \in \mathbb{R}\}$</u></p> <p>Range: <u>$\{y y \geq -4\}$</u></p>	<p>$\{x -\infty < x < \infty, x \in \mathbb{R}\}$ $\{x x \in \mathbb{R}\}$</p> <p>$\{y -\infty < y \leq 8, y \in \mathbb{R}\}$ $\{y y \leq 8, y \in \mathbb{R}\}$</p>	<p><u>$\{x -4 \leq x \leq 6, x \in \mathbb{R}\}$</u></p> <p><u>$\{y -10 \leq y \leq 10, y \in \mathbb{R}\}$</u></p>

2. Determine if the following graphs are functions or non-functions. State the domain & range.

<p>Non Function</p> 	<p>Function</p> 	<p>Function</p> 
<p>$D: \{x -3 \leq x \leq 9, x \in \mathbb{R}\}$ $R: \{y -7 \leq y \leq 5, y \in \mathbb{R}\}$</p>	<p>$D: \{x x \leq 8, x \in \mathbb{R}\}$ $R: \{y y \geq -4, y \in \mathbb{R}\}$</p>	<p>$D: \{x x \in \mathbb{R}\}$ $R: \{y y \geq -8, y \in \mathbb{R}\}$</p>

3. Draw a graph to represent a function or non-function.

 <p style="text-align: center;">FUNCTION</p>	 <p style="text-align: center;">NON-FUNCTION</p>
---	---

4. Determine the value of the following using function Notation.

$$w(x) = 2x - 5 \quad h(x) = 2(x - 8) \quad a(x) = \frac{5x - 10}{2} \quad t(x) = 6(x + 11)$$

a) $h(7)$

$$h(x) = 2(x - 8)$$

$$h(7) = 2(7 - 8)$$

$$h(7) = 2(-1)$$

$$\boxed{h(7) = -2}$$

b) $w(15)$

$$w(x) = 2x - 5$$

$$w(15) = 2(15) - 5$$

$$w(15) = 30 - 5$$

$$\boxed{w(15) = 25}$$

c) $a(4) + t(5)$

$$a(4) = \frac{5(4) - 10}{2}$$

$$a(4) = \frac{20 - 10}{2}$$

$$a(4) = \frac{10}{2}$$

$$a(4) = 5$$

$$t(5) = 6(5 + 11)$$

$$t(5) = 6(16)$$

$$t(5) = 96$$

$$5 + 96 = \boxed{101}$$

d) $w(h(2))$

$$\textcircled{1} h(2) = 2(2 - 8)$$

$$h(2) = 2(-6)$$

$$h(2) = -12$$

$$\textcircled{2} w(-12) = 2(-12) - 5$$

$$w(-12) = -24 - 5$$

$$\boxed{w(-12) = -29}$$

e) $h(3) + a(10) - t(2)$

$$h(3) = 2(3 - 8)$$

$$h(3) = 2(-5)$$

$$h(3) = -10$$

$$a(10) = \frac{5(10) - 10}{2}$$

$$a(10) = \frac{50 - 10}{2}$$

$$a(10) = \frac{40}{2}$$

$$a(10) = 20$$

$$t(2) = 6(2 + 11)$$

$$t(2) = 6(13)$$

$$t(2) = 78$$

$$h(3) + a(10) - t(2)$$

$$-10 + 20 - 78$$

$$= \boxed{-68}$$

$w(-12) = -24 - 5$
 $w(-12) = -29$

$a(6) = 20$

****THE NEXT TWO QUESTIONS ARE DIFFERENT!!!!*****

f) $w(x) = 63$
 $w(x) = 2x - 5$
 $63 = 2x - 5$
 $63 + 5 = 2x$
 $\frac{68}{2} = \frac{2x}{2}$
 $34 = x$

g) $t(x) = 216$
 $t(x) = 6(x+1)$
 $216 = 6(x+1)$
 $216 = 6x + 66$
 $216 - 66 = 6x$
 $\frac{150}{6} = \frac{6x}{6}$
 $25 = x$

5. Identify the domain & Range.

a) b) c)

$$y = x$$

5. Identify the domain & Range.

a)

w	g
1	20
2	25
3	30
4	35
5	40

$$D: \{1, 2, 3, 4, 5\}$$

$$R: \{20, 25, 30, 35, 40\}$$

b)

m	r
11	37
12	42
13	47
14	52
55	57

$$D: \{11, 12, 13, 14, 55\}$$

$$R: \{37, 42, 47, 52, 57\}$$

c)

k	v
10	112
11	123
12	134
13	145
14	156

$$D: \{10, 11, 12, 13, 14\}$$

$$R: \{112, 123, 134, 145, 156\}$$

$$f(x) = 3x^2 - 5 \quad g(x) = \frac{4x-2}{2} \quad \underline{h(x)} = 3(x-3)^2 + 4 \quad \underline{i(x)} = 6x$$

$$g(x) = 2x - 1$$

① Find h(-2) $x = -2$

$$h(x) = 3(x-3)^2 + 4$$

$$h(-2) = 3(-2-3)^2 + 4$$

$$h(-2) = 3(-5)^2 + 4$$

$$h(-2) = 3(25) + 4$$

$$h(-2) = 75 + 4$$

$$h(-2) = \underline{79} \quad b)$$

$$(-2, \underline{79})$$

x y

④ i(x) = 18 $y = 18$

$$\underline{i(x)} = 6x$$

$$\frac{18}{6} = \frac{6x}{6}$$

$$\underline{3} = x \quad b)$$

$$(\underline{3}, \underline{18})$$

x y

$$\textcircled{5} \quad h(x) = 151$$

$$h(x) = 3(x-3)^2 + 4$$

$$151 = 3(x-3)^2 + 4$$

$$151 - 4 = 3(x-3)^2$$

$$\frac{147}{3} = \frac{3(x-3)^2}{3}$$

$$\sqrt{49} = \sqrt{(x-3)^2}$$

$$7 = x - 3$$

$$7 + 3 = x$$

$$10 = x \quad \text{a)}$$

Assignment

Answers:

① b)

② a)

③ c)

④ b)

⑤ a)

⑥ d)

⑦ c)

⑧ a)

① $f(6) = 103$

② $g(6) - i(4) = -13$

③ $x = 9$

a) Non Function

D: $\{x \mid x \geq -6, x \in \mathbb{R}\}$

R: $\{y \mid y \leq 4, y \in \mathbb{R}\}$

b) Function

D: $\{x \mid x \in \mathbb{R}\}$

R: $\{y \mid y \geq -4, y \in \mathbb{R}\}$

Review sheet

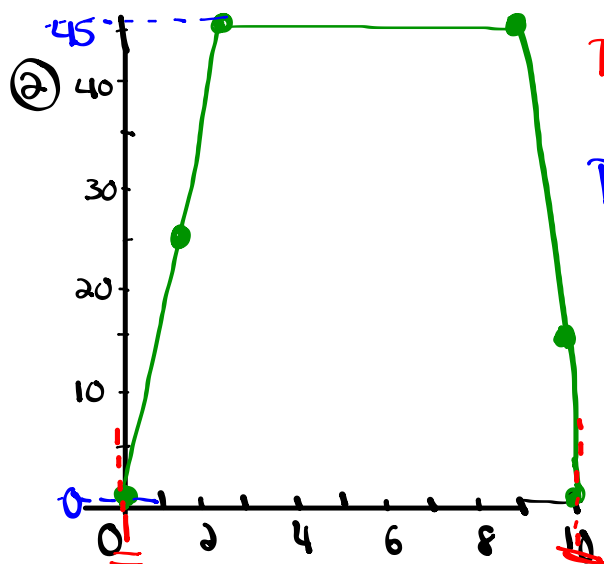
① Identify the domain, range, and if each is a function or non-function.

a) $\{(\underline{0}, \underline{0}), (\underline{5}, \underline{1}), (\underline{10}, \underline{2}), (\underline{15}, \underline{3}), (\underline{20}, \underline{4})\}$

Domain: $\{0, 5, 10, 15, 20\}$

Range: $\{0, 1, 2, 3, 4\}$

It is a function because the x-values do not repeat



D: $\{x \mid 0 \leq x \leq 10, x \in \mathbb{R}\}$

R: $\{y \mid 0 \leq y \leq 45, y \in \mathbb{R}\}$

Function

$$\textcircled{c} \quad a(x) = 3(x-2) + 5$$

$$t(x) = -15x + 7$$

$$m(x) = 5x^2 - 9$$

$$h(x) = \frac{1}{2}x - 11$$

$$a) \quad a(x) = 68$$

$$a(x) = 3(x-2) + 5$$

$$68 = 3(x-2) + 5$$

$$68 - 5 = 3(x-2)$$

$$63 = 3(x-2)$$

$$63 = 3x - 6$$

$$63 + 6 = 3x$$

$$\frac{69}{3} = \frac{3x}{3}$$

$$\boxed{23 = x}$$

$$\therefore a(\underline{23}) = \underline{68}$$

$$(\underline{23}, \underline{68})$$

$$d) \quad h(\underline{100})$$

$$h(x) = \frac{1}{2}x - 11$$

$$h(\underline{100}) = \frac{1}{2}(\underline{100}) - 11$$

$$h(100) = 50 - 11$$

$$\boxed{h(100) = 39}$$

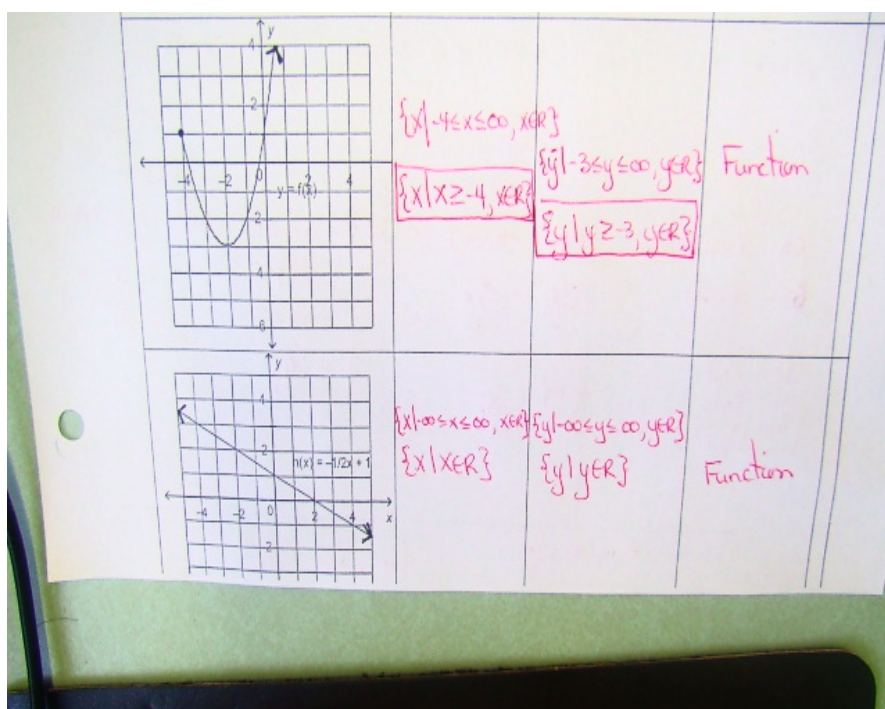
$$(\underline{100}, \underline{39})$$

1. Identify the domain, range and if each is a function or non-function?

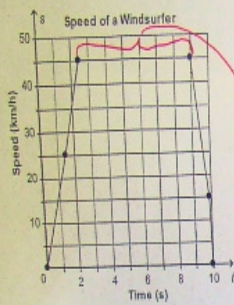
- F a) $\{(0,0), (5,1), (10,2), (15,3), (20,4)\}$ D: $\{0,5,10,15,20\}$ R: $\{0,1,2,3,4\}$
- NF b) $\{(0,3), (0,1), (1,2), (2,3), (4,4)\}$ D: $\{0,1,2,4\}$ R: $\{3,1,2,4\}$
- F c) $\{(0,5), (5,6), (1,2), (7,9), (15,4)\}$ D: $\{0,5,1,7,15\}$ R: $\{5,6,2,9,4\}$
- F d) $\{(0,6), (8,1), (10,1), (15,3), (20,4)\}$ D: $\{0,8,10,15,20\}$ R: $\{6,1,3,4\}$
- NF e) $\{(10,8), (16,4), (12,7), (10,3), (19,6)\}$ D: $\{10,16,12,19\}$ R: $\{8,4,7,3,6\}$

2. Complete the chart:

Relation	Domain	Range	Function / Nonfunction
	$\{x 0 \leq x \leq 10, x \in \mathbb{R}\}$	$\{y 0 \leq y \leq 45, y \in \mathbb{R}\}$	Function

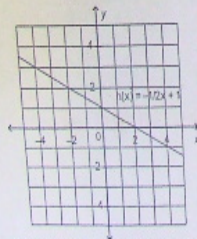


3. This graph shows the speed of a windsurfer, s , as a function of time, t .



- a) How long did the windsurfing last? **10 seconds**
 b) How long was the windsurfer's speed 45km/h? **(9.5s - 9s)**
6.5 seconds

4. This is a graph of the function



$h(x) = -\frac{1}{2}x + 1$ a) $h(-2) = -\frac{1}{2}(-2) + 1$

$= +1 + 1$
 $= \boxed{2}$

b) $-1 = -\frac{1}{2}x + 1$

$-2 = -\frac{1}{2}x$

$\boxed{4 = x}$

- a) Determine the value of y when the x value is -2 .
 b) Determine the value of x when the y value is -1 .

6.

$a(x) = 3(x-2) + 5$ $t(x) = -15x + 7$ $m(x) = 5x^2 - 9$ $h(x) = 1/2x - 11$

<p>a) $a(x) = 68$</p> $68 = 3(x-2) + 5$ $\frac{63}{3} = \frac{3(x-2)}{3}$ $21 = x - 2$ $\boxed{23 = x}$	<p>b) $t(x) = 862$</p> $862 = -15x + 7$ $\frac{855}{-15} = \frac{-15x}{-15}$ $\boxed{-57 = x}$	<p>c) $a(10)$</p> $a(10) = 3(10-2) + 5$ $= 3(8) + 5$ $= 24 + 5$ $\boxed{= 29}$	<p>d) $h(100)$</p> $h(100) = \frac{1}{2}(100) - 11$ $= 50 - 11$ $\boxed{= 39}$
<p>e) $m(a(5)) = m(4) = \boxed{91}$</p>		<p>f) $h(30) + m(5)$ $4 + 116 = \boxed{120}$</p>	

