

Human Physiology 110 Exam Review Unit 3: Digestion

Part A: Label the following diagram:

small intestine
liver

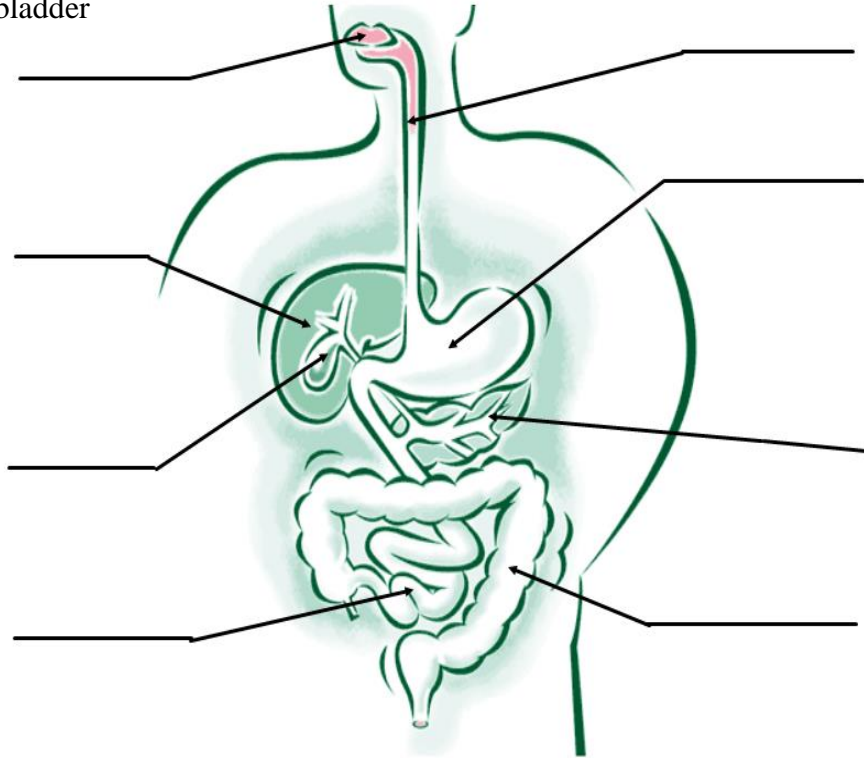
mouth
gallbladder

stomach

large intestine

esophagus

pancreas



List the organs of digestion shown on the diagram which are not part of the alimentary (digestive) canal)

Part B: Fill in the word that would fit in the blank:

1. The _____ is a long muscular tube the connects the mouth to the stomach
2. Bile is produced in the _____
3. Food enters the digestive system through the _____
4. _____ is the most common digestive problem
5. _____ causes juices from the stomach to go up into the esophagus
6. _____ effect is watery wastes.
7. _____ can be caused when there are too many salts in your body. It can cause your skin to appear a yellow color.
8. When the protective digestive lining of the stomach is broken down these can form _____.

Part C: Answer each of the following questions in sentence form.

1. How does food move through the digestive system?
2. Where is bile produced? Where is it stored?
3. What prevents food from entering the windpipe when you swallow?
4. In what organ does food get absorbed into the blood stream?
5. Describe the function of saliva. Where is it produced?

Part D: Identify the word or term that does not belong and explain why it does not belong

1. Alimentary canal, mouth, liver
2. Enzymes, mechanical digestion, chemical digestion
3. esophagus, peristalsis, mouth
4. gallbladder, saliva, mouth, enzymes.