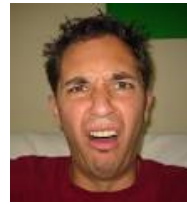


$$2x^2 + 7x + 3$$

$$\left(\frac{2x}{2} + \frac{1}{2}\right) \left(\frac{2x}{2} + \frac{6}{2}\right)$$

$$(x + 1) (x + 3)$$

$$(2x + 1) (x + 3)$$



$$\begin{aligned} 1 \times 6 &= \oplus 6 \quad \rightarrow \text{Same} \\ 1 + 6 &= \oplus 7 \quad \rightarrow \text{Both} \end{aligned}$$

$$1 \times 6$$

$$5x^2 + 34x - 7$$

$$(\cancel{5}x - 1)(\cancel{5}x + 35)$$

$$(x - 1)(x + 7)$$

$$(5x - 1)(x + 7)$$

$$5x^2 + 35x - 1x - 7$$

$$5x^2 + 34x - 7$$



$$= 1 \times 35 = -35 \quad \text{Diff}$$

$$= 1 + 35 = +34 \quad \text{Big +}$$

$$-1x + 35$$

$$6x^2 - 7x + 2$$



$$\left(\frac{6x}{6} - \frac{3}{6}\right) \left(\frac{6x}{6} - \frac{4}{6}\right)$$

$$(x-1)(x-2)$$

$$(2x-1)(3x-2)$$

~~\_\_\_\_\_~~

$$\begin{aligned} -3x - 4 &= +12 \\ -3 + -4 &= -7 \end{aligned}$$

Same  
Both -

$$\begin{aligned} -1x - 12 \\ -2x - 6 \\ -3x - 4 \end{aligned}$$

$4x^2 + 5x - 6$

$-3 \times 8 = -24$   
 $-3 + 8 = +5$   
 Big

$(4x-3)(x+2)$

$-1 \times 24$   
 $-2 \times 12$   
 $-3 \times 8$