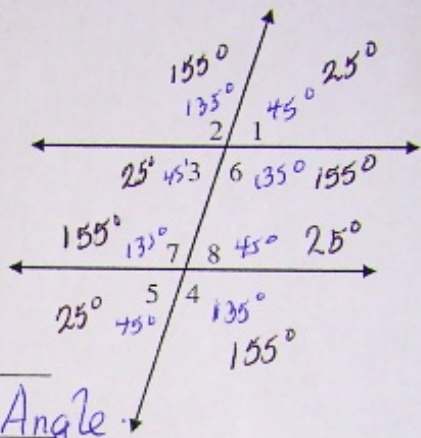


Parallel lines Cut by a Transversal Name Answer Key

Assume all lines that look parallel are parallel.



Name the angle pairs.

1. Angles 2 and 4 are Alt Ext.
2. Angles 7 and 4 are Vertical Opp. Angle
3. Angles 1 and 2 are Supplementary.
4. Angles 6 and 7 are Alt Int.
5. Angles 6 and 8 are Co-Int.
6. Angles 6 and 4 are Corresponding.
7. If angle 4 = 135, find

Angle 1 45°

Angle 2 135°

Angle 3 45°

Angle 5 45°

Angle 6 135°

Angle 7 135°

Angle 8 45°

6. Angles 6 and 4 are Corresponding.

7. If angle 4 = 135, find

Angle 1 45°

Angle 2 135°

Angle 3 45°

Angle 5 45°

Angle 6 135°

Angle 7 135°

Angle 8 45°

8. If angle 8 = 25, find

Angle 1 25°

Angle 2 155°

Angle 3 25°

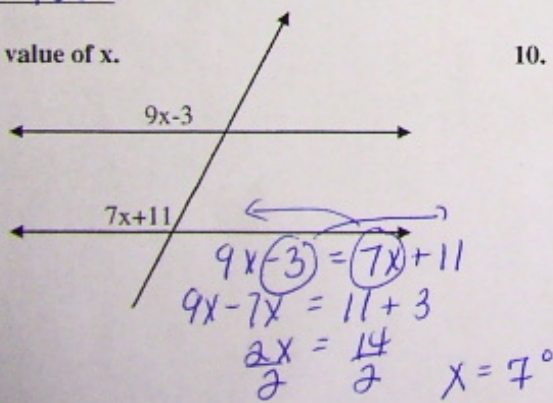
Angle 4 155°

Angle 5 25°

Angle 6 155°

Angle 7 155°

9. Find the value of x.



10.

