

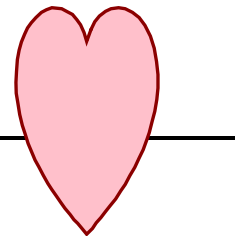
April 10, 2019

- Chapter 22 Circulation
 - Review Heart
 - Functions of Heart cont
 - Assignment

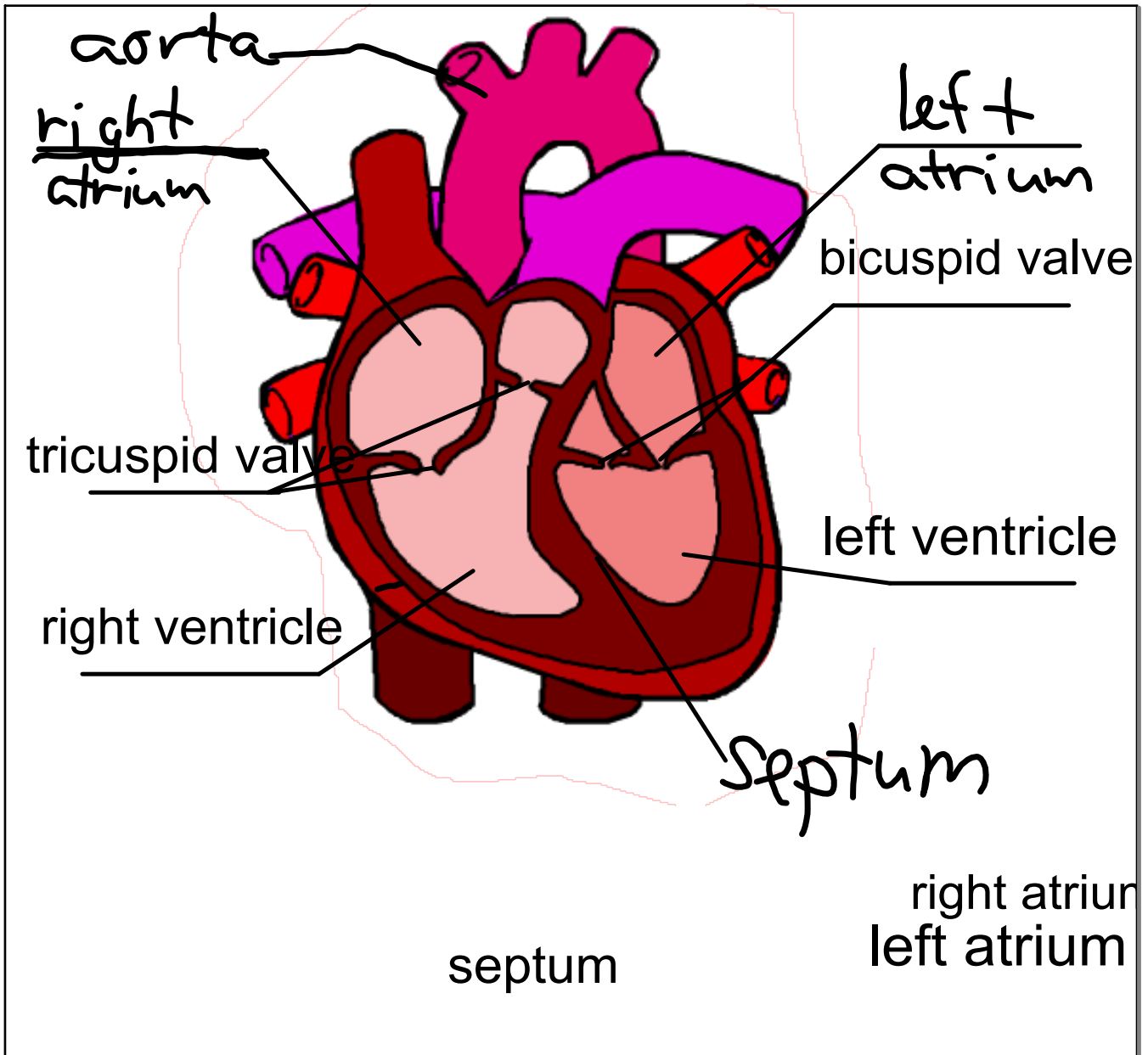
Warm - Up



The human heart beats roughly _____ million times a year.



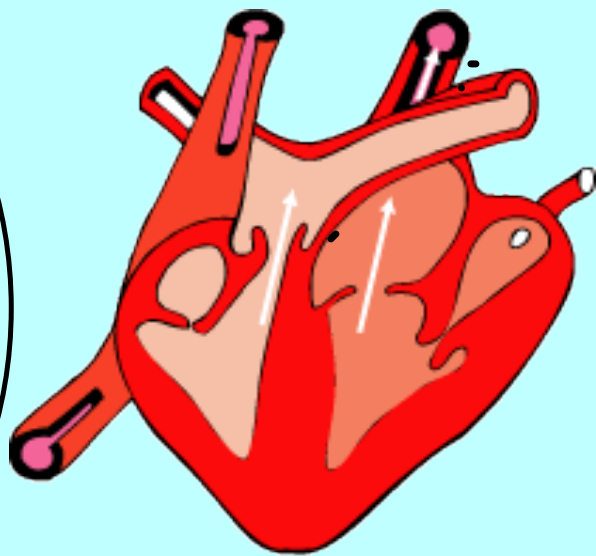
Quiz next week!!



Heart Beats and Heart Murmors

Heartbeat is the rhythmic pumping of the heart. The **closing** of the heart valves makes Lub dup sounds. Lub = bicuspid and tricuspid valves closed

Dub = **semilunar** valves closed



If these valves are **damaged**, blood may flow back into the heart **causing** a heart murmur.

Read pg. 378-379

pg. 383 :Complete #1,2

Complete Part A Sec 22-1

Once complete
pass this all
in!!!!

Also complete:

1. Which two valves prevent blood from flowing backwards?
2. Why do we say that the circulatory system is a closed system?
3. What is the difference between a ventricle and an atrium?
4. Name the three valves contained within your heart.

Attachments

Biology 113 blood vessel assignment.doc