

Dec 13, 2019

- 1) Respiratory Diseases cont
- 2) Section Review 23-3/pg 407 #9-11
- 2) Respiratory System Quiz

Quiz Monday on Respiratory System!!!

3. Asthma



- also caused by particles trapped in the bronchioles
- these particles cause the muscular walls of the bronchioles to contract and become narrow
- can be caused by various allergens (dust, dirt, smoke, pollen, pet dander etc), strenuous activity, stress etc

Symptoms

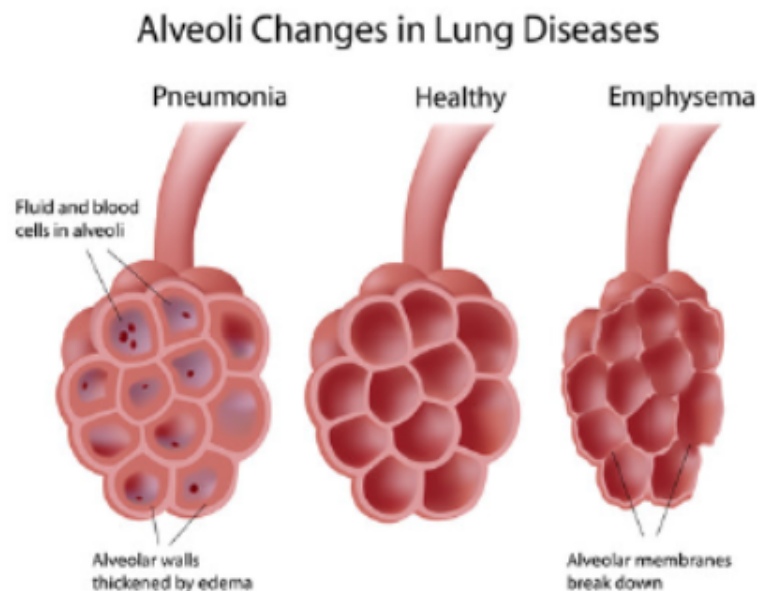
- difficulty breathing
- wheezing
- chest tightness

Treatment

- puffers which contain medication that relaxes the bronchioles

4. Emphysema

- the walls of the alveoli break down so less gas is exchanged in the lungs
- usually caused by smoking
- the damage to the alveoli is irreversible only the symptoms can be treated not the damage



pg 407 #9-11

Section Review 23-3 WS

Once complete pass in/ if you are finished
before others use this extra time to review for
quiz

Quiz Respiratory System