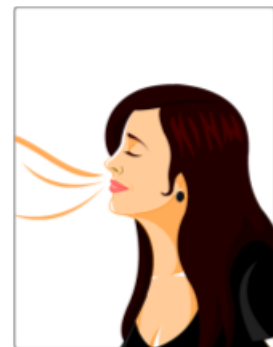


Dec 4, 2019

1) The Respiratory System

Warm-Up

You take ~ breaths in a day.



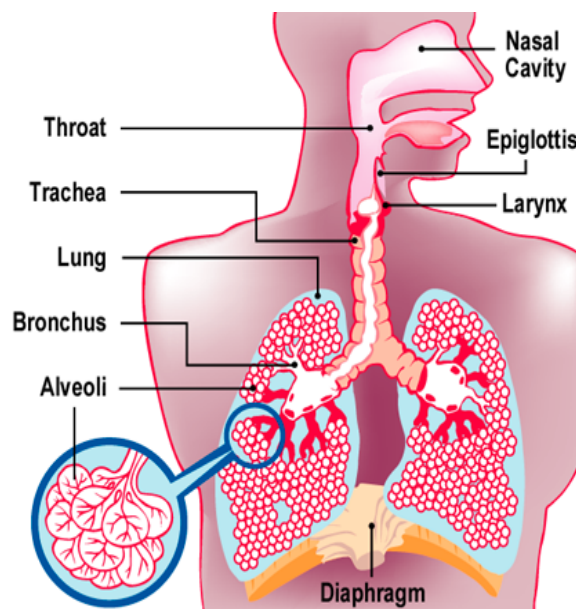
Section 23-1 The Respiratory System



List what you think the organs are involved in the Respiratory Tract.

Consists of the lungs and the tubes and passageways that the air moves through.

You have two lungs a left lung and a right lung

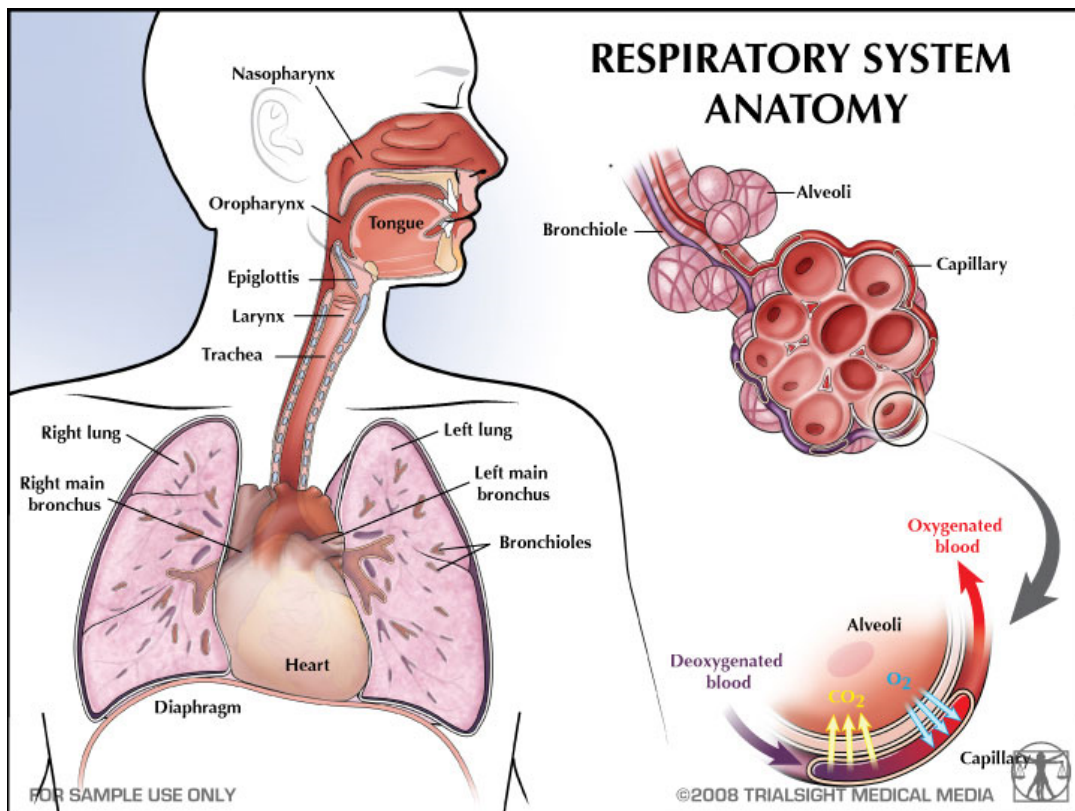


pneumo

Jobs:

Taking oxygen from the air and allowing it to enter the blood and removing carbon dioxide from the blood and having it exit into the air.

Keeps our bodies alive. The cells of our bodies need oxygen for growth and energy.



The Respiratory Tract

Oxygen from the air gets into our lungs by passing through the various tubes and passageways.

Air moves along the tract and is warmed, moistened and filtered. As it exits the tract is loses moisture and cools.

The structures of the Respiratory System

1) The Nose

- air enters the system through the nose which has two nostrils.
- the two nostrils branch into two smaller spaces called nasal cavities.
- The nostrils and nasal cavities are lined with short hairs called cilia which move back and forth in a wave-like motion and cells that create mucus. The mucus traps particles before they enter the lungs.

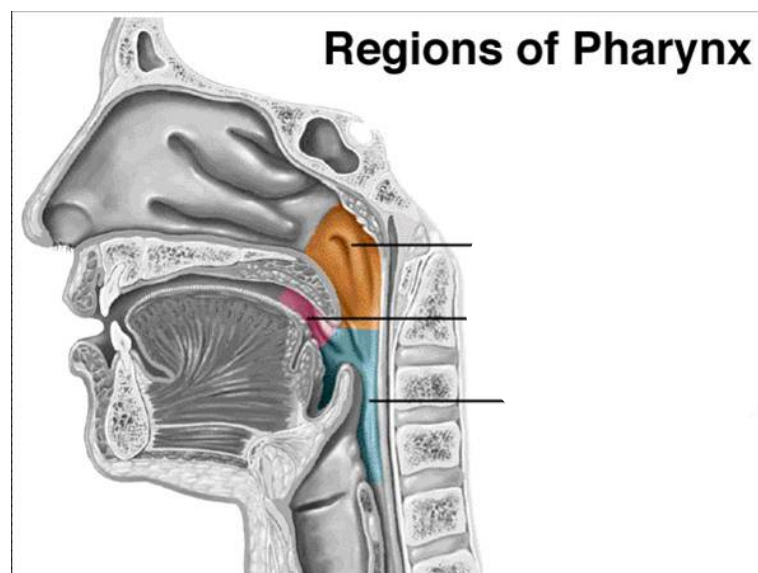


Pharynx

often referred to as the throat it is a pathway for both food and air.

two tubes are located at the end of the pharynx the esophagus (for food) and the trachea/wind pipe (for air).

the epiglottis separates the two and is always open to allow air to pass through and closes when you swallow.



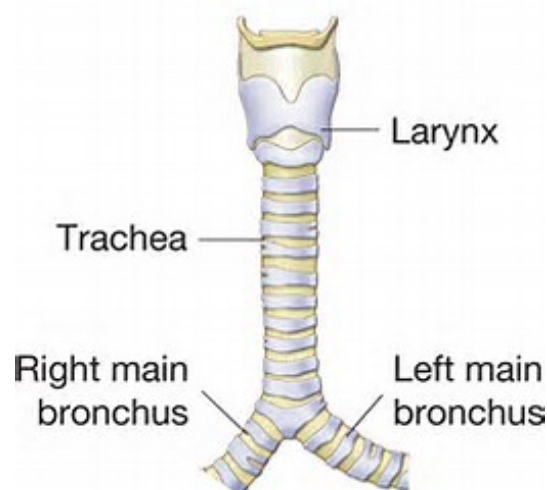
Trachea/Windpipe

main tube in throat that leads to the lungs

the top of the trachea is called the larynx (voice box). It is made of cartilage and contains the vocal cords, which vibrate as air flows over them producing sound.

the trachea itself is made of cartilage and smooth muscle which keep the trachea open so air can pass through all the time

It is also lined with mucus and cilia (same as the nasal cavity). The cilia keep the lungs clean by sweeping the mucus and debris toward the pharynx.



Bronchi and Bronchioles

located at the lower end of the trachea

Bronchi- two air passages that lead from the trachea to the left and right lungs

- contain cartilage and smooth muscle

Bronchioles - smaller tubes within the lung

- only contain muscle

Both are lined with mucus and cilia

