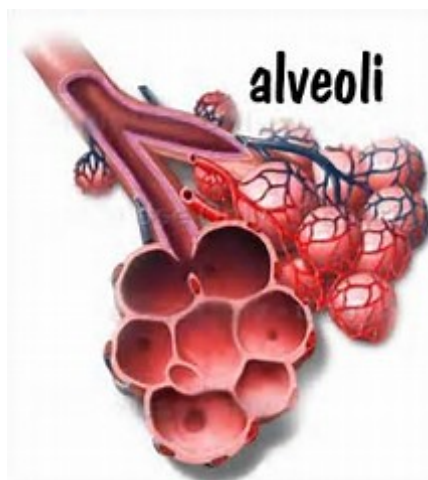


Dec 5, 2019

## 1) The Respiratory System cont

# Warm-Up

A typical pair of human lungs contain about  million alveoli



# Bronchi and Bronchioles

located at the lower end of the trachea

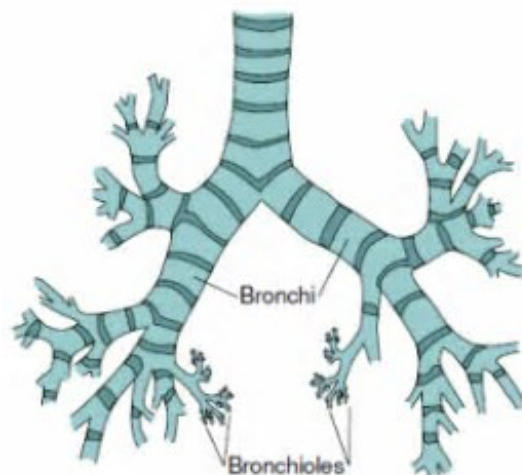
Bronchi- two air passages that lead from the trachea to the left and right lungs

- contain cartilage and smooth muscle

Bronchioles - smaller tubes within the lung

- only contain muscle

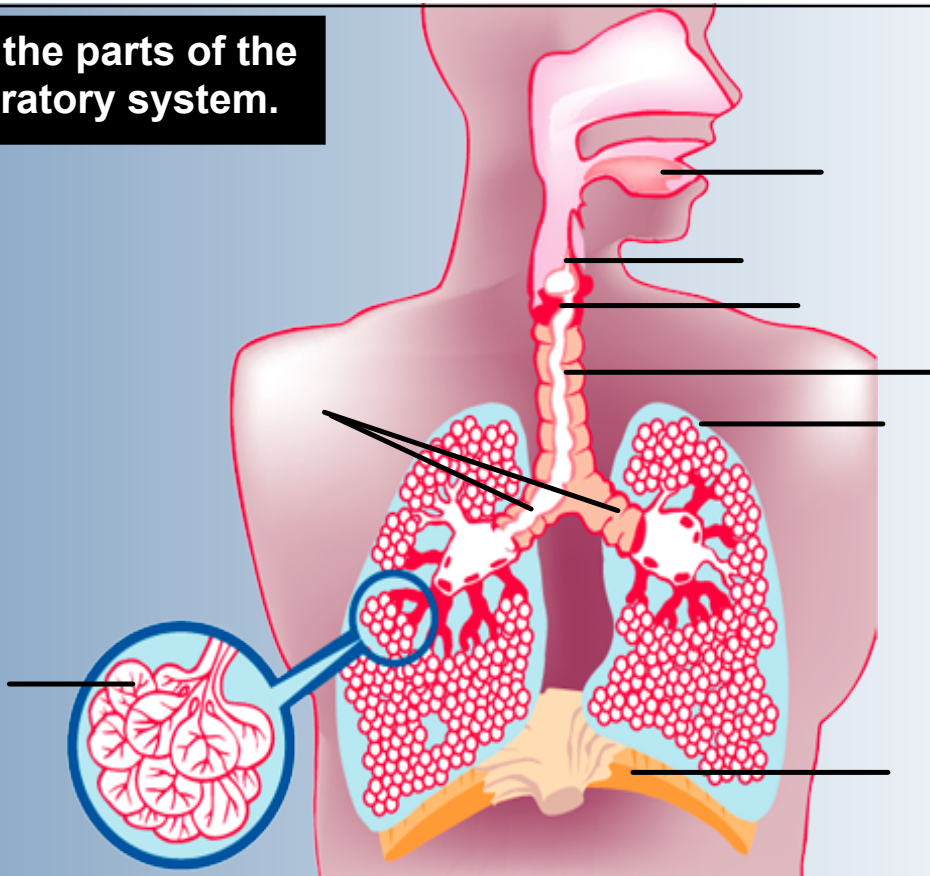
Both are lined with mucus and cilia



# Lungs

- contain both air passageways and tiny air sacs called alveoli.
- Alveoli are the site where oxygen and carbon dioxide are exchanged between the lungs and the blood stream through diffusion.
- There are ~300 million alveoli in the human lungs.

Match the parts of the respiratory system.



lungs

larynx

alveoli

bronchi

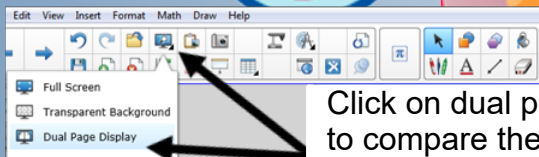
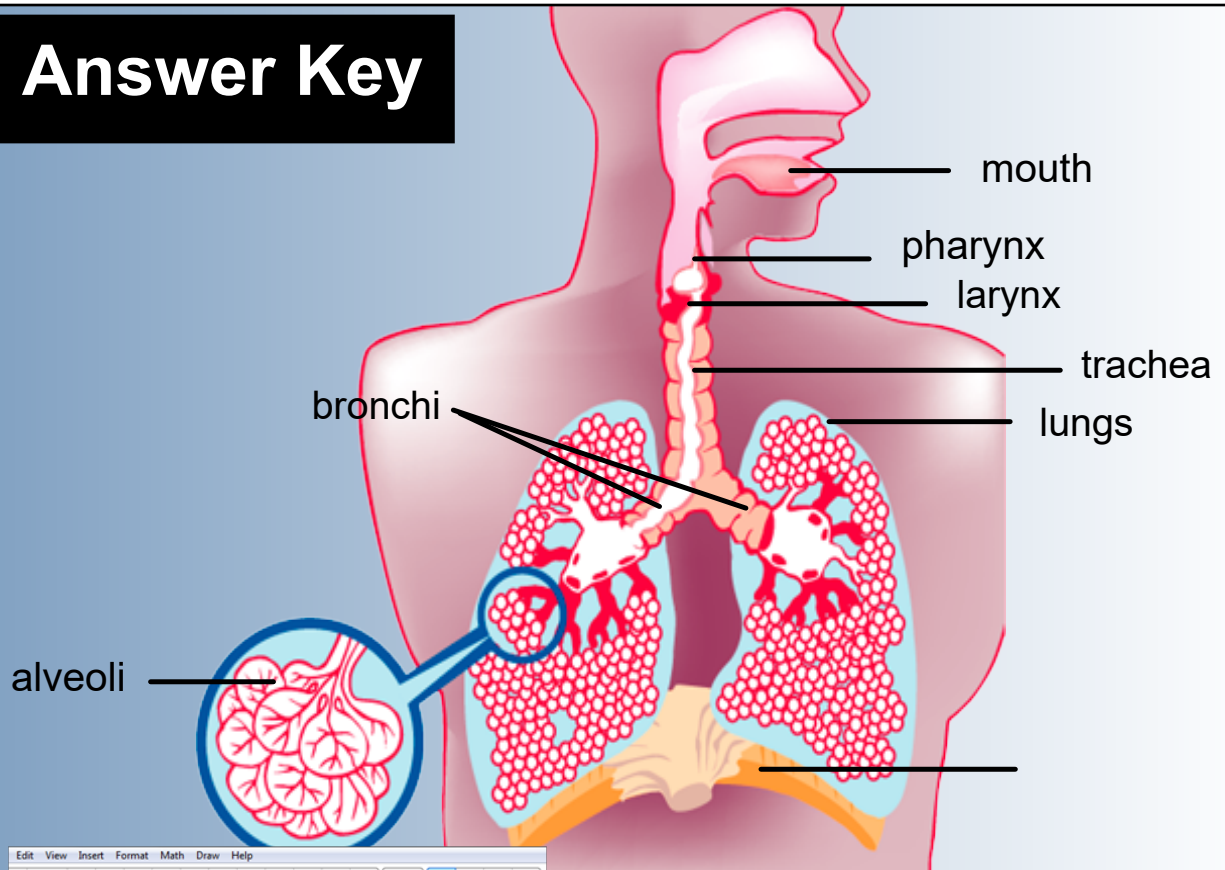
trachea

mouth

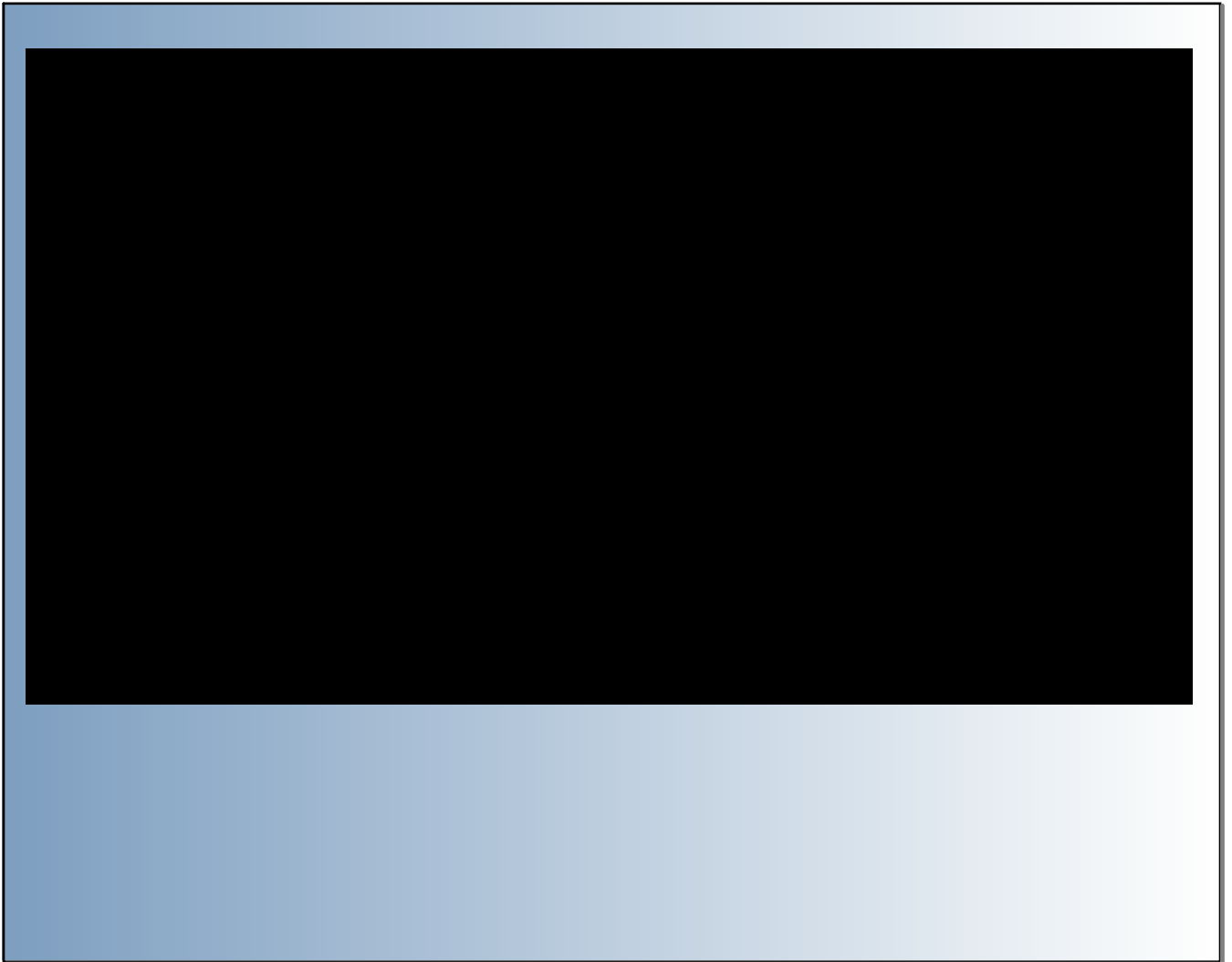
pharynx



# Answer Key



Click on dual page view to compare the 2 pages.



pg 403 #1-4

Section Review 23-1