

# May 7, 2019

- 1) Blood Quiz
- 2) Systemic vs Pulmonary Circulation

Test Monday/Tuesday on Circulatory System!

## Warm-Up

It takes blood  to circulate the entire body

# Blood Quiz

How does oxygen get in the blood?

The main job of the circulatory system is to pump blood carrying oxygen around the body. So how does oxygen get in the blood?

It must be pumped to the lungs and this happens separately from the rest of the body.

# Circulation

There are two circulatory systems:

Pulmonary - the pathway of blood between the heart and the lungs

Systemic- the pathway of blood between the heart and all other parts of the body except the lungs

## Pulmonary Circulatory System



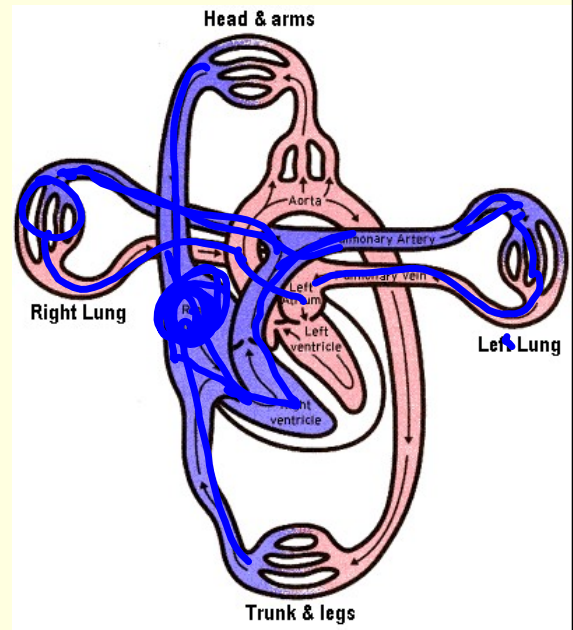
Deoxygenated blood or oxygen poor blood (no oxygen, high in CO<sub>2</sub>)

returns from the body through the superior (head, chest and arms) and inferior (lower body regions) vena cava and enters the right atrium.

It moves through the right atrium through the tricuspid valve to the right ventricle.

The right ventricle pumps blood through the pulmonary artery, which leads to the lungs.

In the lungs, the blood gives up carbon dioxide and picks up oxygen and returns back to the heart through the pulmonary veins.



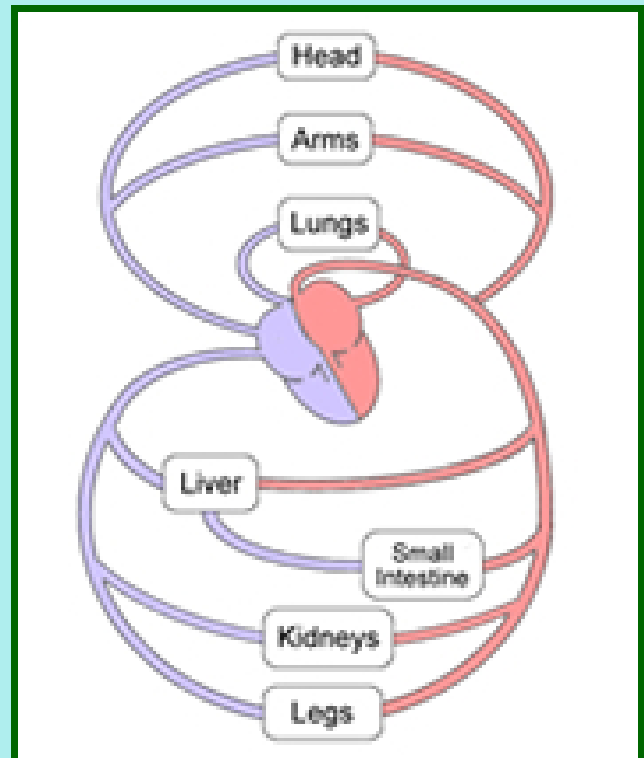
## Systemic Circulatory System (sending blood from the heart to the rest of the body)

Oxygenated blood (with oxygen in it) passes from the left atrium through the bicuspid valve into the left ventricle.

The left ventricle pumps blood to the aorta.

The aorta branches into smaller arteries, which go to all parts of the body. Where it gives up oxygen and picks up carbon dioxide.

Veins return the blood to your heart from the body into the right atrium.



Read pg 385-386

Complete:

#6,7 pg 387

Review Sec 22-2 Part A,B

1. What side of your heart pumps blood to your lungs? your body?
2. Where do the pulmonary arteries carry blood? What type of blood do they carry oxygenated (with oxygen) or deoxygenated (without oxygen)?
3. Which is the largest artery in the body? What is its job?
4. List where each of the following arteries carry blood:
  - coronary
  - pulmonary
  - carotid

## Attachments

---

Biology 113 blood vessel assignment.doc

Maintaining\_a\_Healthy\_Heart\_and\_Circulatory\_System.asf