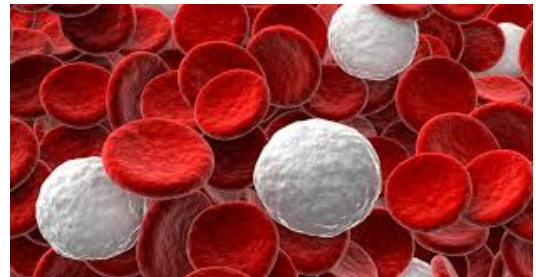


# Oct 30, 2019

- 1) cont Blood info
- 2) Review Blood (Blood Assignment)

## Warm - Up

For every  red blood cells in our body, there is only about 1 white blood cell.



# White Blood Cells

🌐 **Job = protect the body from disease**

i.e. if you have an infection the number of white blood cells will increase

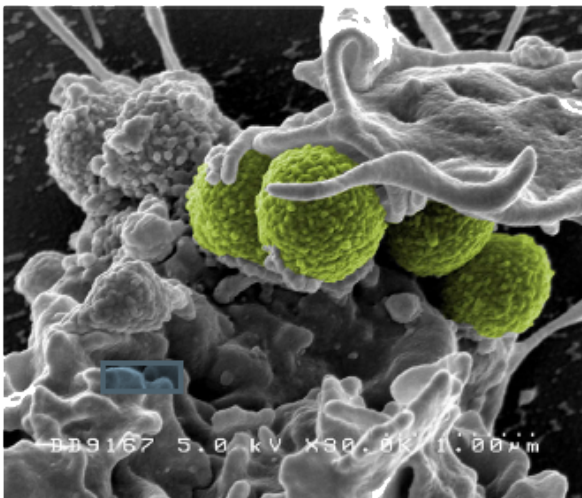
What happens

the white blood cells move to the infected area and surround the bacteria and digest them.

pus that forms in an infected area is made of dead white blood cells among other things.

**Job = produce antibodies which fight infection.**

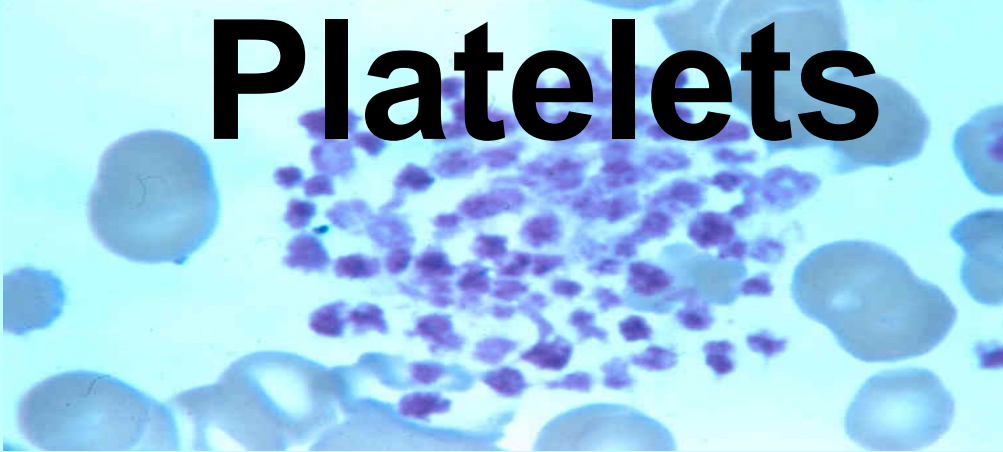
**Antibodies combat foreign invaders i.e. Bacteria and viruses. Antibodies destroy foreign invaders by binding to them.**



**FIGURE 4.4**

A white blood cell showing cytoplasmic extensions that allow it to "swallow" particles or pathogens.

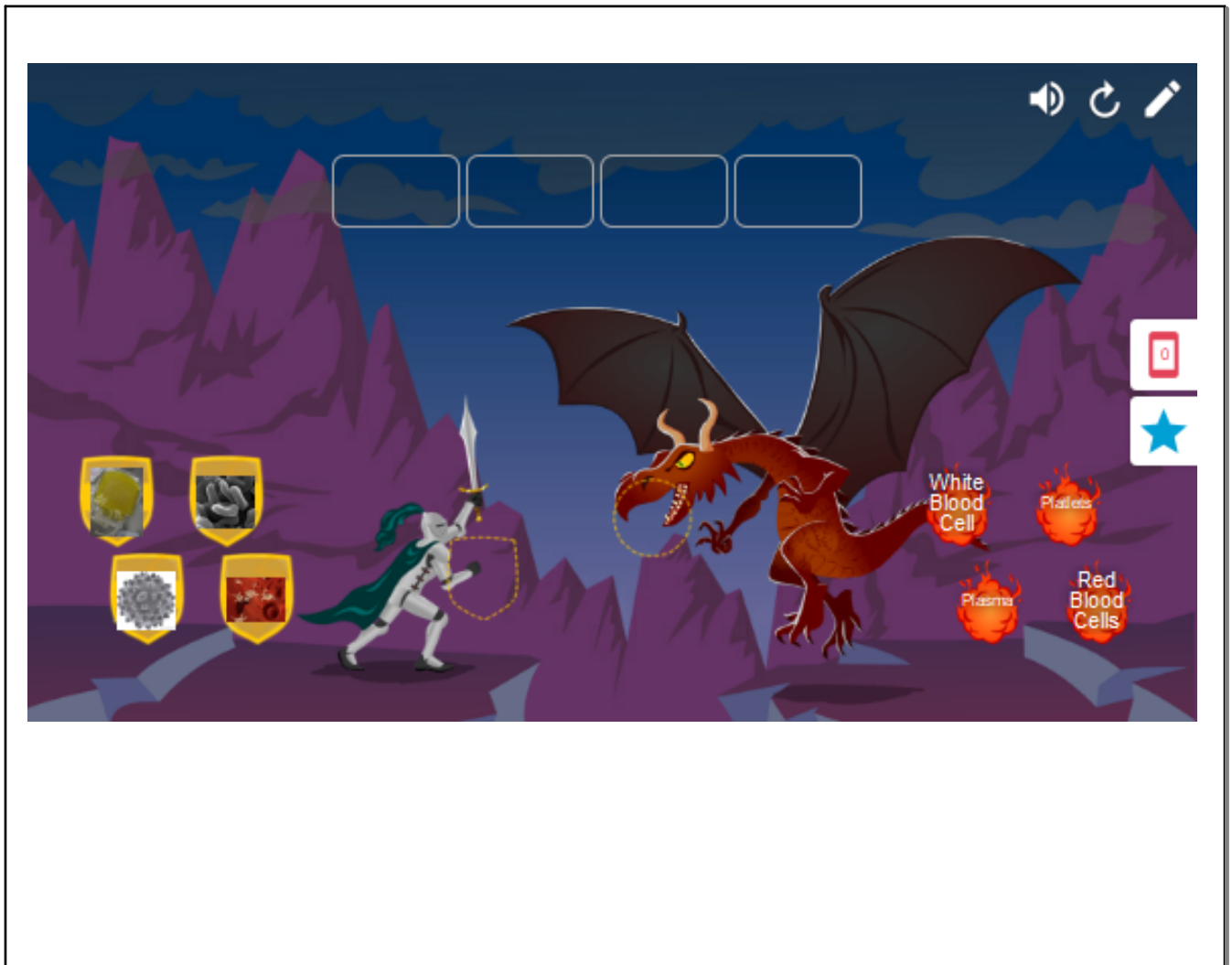
# Platelets



are pieces of cells that cause blood to clot.

This prevents a person from bleeding to death.

Platelets stick together and release chemicals, which seal a wound.



Word

Description

□ □ □ □

platelets

plasma

white blood cell

red blood cell

contains hemoglobin

the non-living liquid part of blood

cause your blood to clot

fights infection

Pg. 391

answer questions #9, 11

Complete Section Review 22-3

## Attachments

---

Biology 113 blood vessel assignment.doc