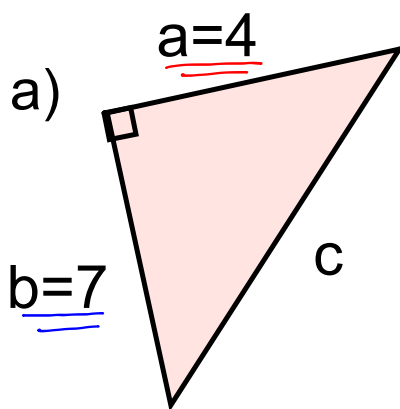
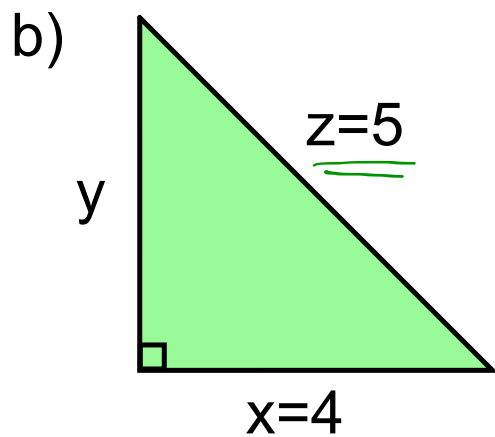


# Warm Up Questions

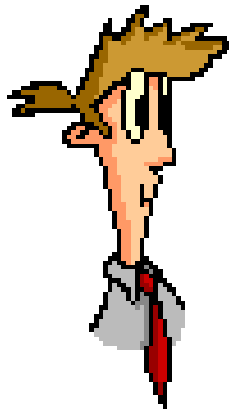
Use Pythagorean Theorem to find the missing side



$$\begin{aligned} a^2 + b^2 &= c^2 \\ (4)^2 + (7)^2 &= c^2 \\ 16 + 49 &= c^2 \\ 65 &= c^2 \\ \sqrt{65} &= \sqrt{c^2} \\ \sqrt{65} &= c \\ 8.06 &= c \end{aligned}$$



$$\begin{aligned} x^2 + y^2 &= z^2 \\ y^2 &= z^2 - x^2 \\ y^2 &= (5)^2 - (4)^2 \\ y^2 &= 25 - 16 \\ \sqrt{y^2} &= \sqrt{9} \\ y &= 3 \end{aligned}$$



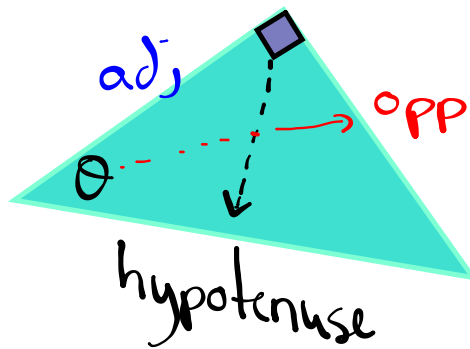
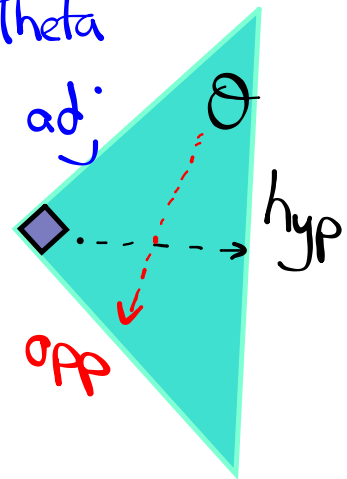
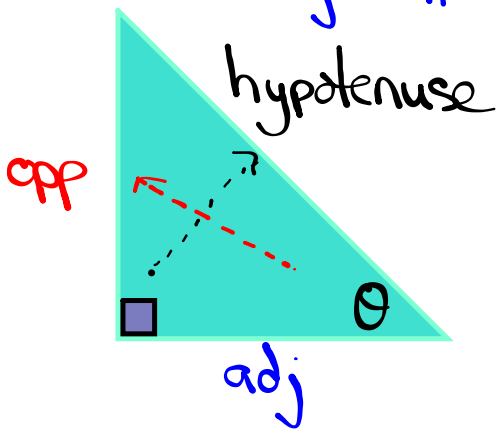
"Theta"



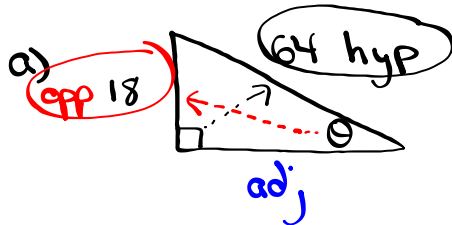
Theta represents the angle.

hypotenuse  $\rightarrow$  across from right angle (longest side)  
 opposite  $\rightarrow$  across/opposite theta

\* adjacent  $\rightarrow$  beside/next to theta



- ② • Label the sides of each triangle  
• Determine the appropriate trig ratio



$$\sin \theta = \frac{\text{opp}}{\text{hyp}}$$

$$\sin \theta = \frac{18}{64}$$

$$\sin \theta = 0.28125$$

$$\sin \theta = 0.2813$$

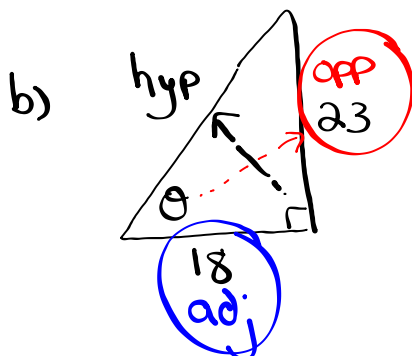
$$\theta = 16^\circ$$

calculator:

$$\sin \theta = 0.2813$$

$$\theta = \sin^{-1}(0.2813)$$

$$\theta = 16.3^\circ = 16^\circ$$



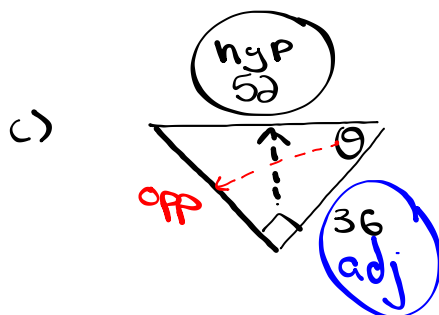
$$\tan \theta = \frac{\text{opp}}{\text{adj}}$$

$$\tan \theta = \frac{23}{18}$$

$$\tan \theta = 1.2778$$

$$\theta = 52^\circ$$

$$\begin{aligned} * \tan \theta &= 1.2778 \\ \theta &= \tan^{-1}(1.2778) \\ \theta &= 51.95^\circ = 52^\circ \end{aligned}$$



$$\cos \theta = \frac{\text{adj}}{\text{hyp}}$$

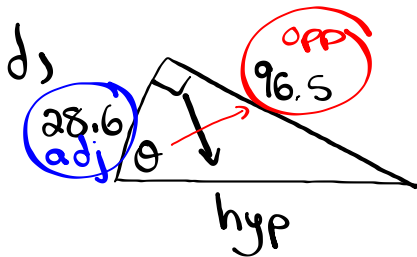
$$\cos \theta = \frac{36}{52}$$

$$\cos \theta = 0.6923$$

$$\theta = 46^\circ$$

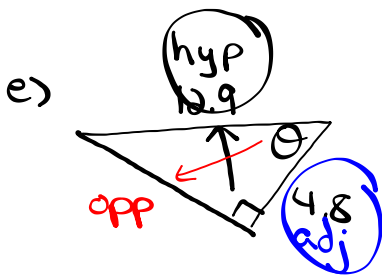
$$\begin{aligned} * \cos \theta &= 0.6923 \\ \theta &= \cos^{-1}(0.6923) \\ \theta &= 46^\circ \end{aligned}$$

- Label the sides of each triangle
- Determine the appropriate trig ratio



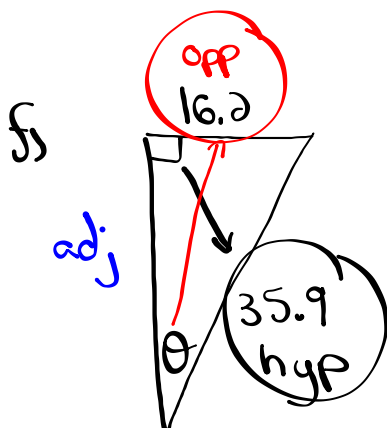
$$\tan \theta = \frac{\text{opp}}{\text{adj}}$$

$$\tan \theta = \frac{96.5}{28.6}$$



$$\cos \theta = \frac{\text{adj}}{\text{hyp}}$$

$$\cos \theta = \frac{4.8}{12.9}$$



$$\sin \theta = \frac{\text{opp}}{\text{hyp}}$$

$$\sin \theta = \frac{16.2}{35.9}$$

## Primary Ratios of Trigonometry

$$\underline{\text{Sine}} \quad \text{Sin} \quad = \quad \frac{\underline{\text{Opposite Side}}}{\text{Hypotenuse}}$$

$$\underline{\text{Cosine}} \quad \text{Cos} \quad = \quad \frac{\underline{\text{Adjacent Side}}}{\text{Hypotenuse}}$$

$$\underline{\text{Tangent}} \quad \text{Tan} \quad = \quad \frac{\underline{\text{Opposite Side}}}{\underline{\text{Adjacent Side}}}$$

## Remember This Saying !!

soh cah toa

"Oscar Had Another Helping Of Apples"

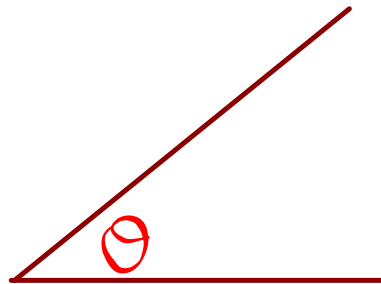
$$\text{Sin} = \frac{o}{h} \quad \frac{\text{Opposite Side}}{\text{Hypotenuse}}$$

$$\text{Cos} = \frac{a}{h} \quad \frac{\text{Adjacent Side}}{\text{Hypotenuse}}$$

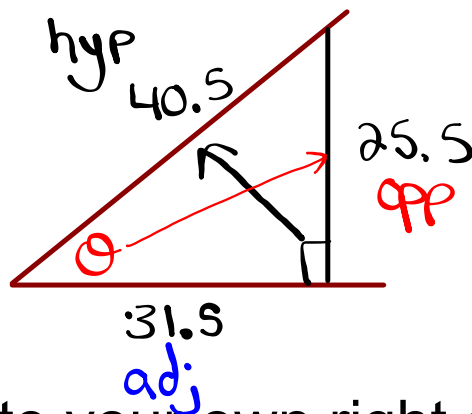
$$\text{Tan} = \frac{o}{a} \quad \frac{\text{Opposite Side}}{\text{Adjacent Side}}$$



Why are sine, cosine and tangent so important?



How can this explain trigonometry??

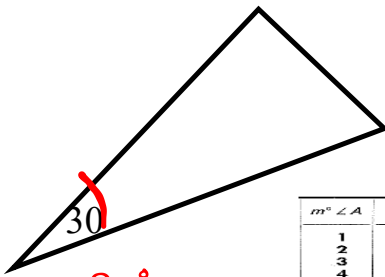


1. Create your own right angled triangle.
2. Measure each side in cm.
3. Label the sides.  
(hypotenuse, opposite, adjacent)
4. Enter your results in my chart.

Check out the chart,  
it will make you feel better.



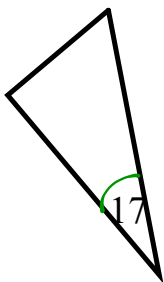
$m^\circ \angle A$	$\sin A$	$\cos A$	$\tan A$	$m^\circ \angle A$	$\sin A$	$\cos A$	$\tan A$
1	0.0175	0.9998	0.0175	46	0.7193	0.6947	1.0355
2	0.0349	0.9994	0.0349	47	0.7314	0.6820	1.0724
3	0.0523	0.9986	0.0524	48	0.7431	0.6691	1.1106
4	0.0698	0.9976	0.0699	49	0.7547	0.6561	1.1504
5	0.0872	0.9962	0.0875	50	0.7660	0.6428	1.1918
6	0.1045	0.9945	0.1051	51	0.7771	0.6293	1.2349
7	0.1219	0.9925	0.1228	52	0.7880	0.6157	1.2799
8	0.1392	0.9903	0.1405	53	0.7986	0.6018	1.3270
9	0.1564	0.9877	0.1584	54	0.8090	0.5878	1.3764
10	0.1736	0.9848	0.1763	55	0.8192	0.5736	1.4281
11	0.1908	0.9816	0.1944	56	0.8290	0.5592	1.4826
12	0.2079	0.9781	0.2126	57	0.8387	0.5446	1.5399
13	0.2250	0.9744	0.2309	58	0.8480	0.5299	1.6003
14	0.2419	0.9703	0.2493	59	0.8572	0.5150	1.6643
15	0.2588	0.9659	0.2679	60	0.8660	0.50	1.7321
16	0.2756	0.9613	0.2867	61	0.8746	0.4848	1.8040
17	0.2924	0.9563	0.3057	62	0.8829	0.4695	1.8807
18	0.3090	0.9511	0.3249	63	0.8910	0.4540	1.9626
19	0.3256	0.9455	0.3443	64	0.8988	0.4384	2.0503
20	0.3420	0.9397	0.3640	65	0.9063	0.4226	2.1445
21	0.3584	0.9336	0.3839	66	0.9135	0.4067	2.2460
22	0.3746	0.9272	0.4040	67	0.9205	0.3907	2.3559
23	0.3907	0.9205	0.4245	68	0.9272	0.3746	2.4751
24	0.4067	0.9135	0.4452	69	0.9336	0.3584	2.6051
25	0.4226	0.9063	0.4663	70	0.9397	0.3420	2.7475
26	0.4384	0.8988	0.4877	71	0.9455	0.3256	2.9042
27	0.4540	0.8910	0.5095	72	0.9511	0.3090	3.0777
28	0.4695	0.8829	0.5317	73	0.9563	0.2924	3.2709
29	0.4848	0.8746	0.5543	74	0.9613	0.2756	3.4874
30	0.50	0.8660	0.5774	75	0.9659	0.2588	3.7321
31	0.5150	0.8572	0.6009	76	0.9703	0.2419	4.0108
32	0.5299	0.8480	0.6249	77	0.9744	0.2250	4.3315
33	0.5446	0.8387	0.6494	78	0.9781	0.2079	4.7046
34	0.5592	0.8290	0.6745	79	0.9816	0.1908	5.1446
35	0.5736	0.8192	0.7002	80	0.9848	0.1736	5.6713
36	0.5878	0.8090	0.7265	81	0.9877	0.1564	6.3138
37	0.6018	0.7986	0.7536	82	0.9903	0.1392	7.1154
38	0.6157	0.7880	0.7813	83	0.9925	0.1219	8.1443
39	0.6293	0.7771	0.8098	84	0.9945	0.1045	9.5144
40	0.6428	0.7660	0.8391	85	0.9962	0.0872	11.4301
41	0.6561	0.7547	0.8693	86	0.9976	0.0698	14.3007
42	0.6691	0.7431	0.9004	87	0.9986	0.0523	19.0811
43	0.6820	0.7314	0.9325	88	0.9994	0.0349	28.6363
44	0.6947	0.7193	0.9657	89	0.9998	0.0175	57.2900
45	0.7071	0.7071	1	90	1	0	Undefined



$\sin 30^\circ = 0.5$

$\cos 30^\circ = 0.8660$

$\tan 30^\circ = 0.5774$

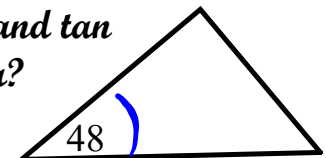


$\sin 17^\circ = 0.2924$

$\cos 17^\circ = 0.9563$

$\tan 17^\circ = 0.3057$

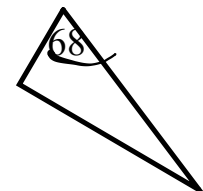
What should be the value of sin, cos, and tan for each of the following values of theta?



$\sin 48^\circ = 0.7431$

$\cos 48^\circ = 0.6691$

$\tan 48^\circ = 1.1106$



$\sin 68^\circ = 0.9272$

$\cos 68^\circ = 0.3746$

$\tan 68^\circ = 2.4751$

$m^\circ \angle A$	$\sin A$	$\cos A$	$\tan A$	$m^\circ \angle A$	$\sin A$	$\cos A$	$\tan A$
1	0.0175	0.9998	0.0175	46	0.7193	0.6947	1.0355
2	0.0349	0.9994	0.0349	47	0.7314	0.6820	1.0724
3	0.0523	0.9986	0.0524	48	0.7431	0.6691	1.1106
4	0.0698	0.9976	0.0699	49	0.7547	0.6561	1.1504
5	0.0872	0.9962	0.0875	50	0.7660	0.6428	1.1918
6	0.1045	0.9945	0.1051	51	0.7771	0.6293	1.2349
7	0.1219	0.9925	0.1228	52	0.7880	0.6157	1.2799
8	0.1392	0.9903	0.1405	53	0.7986	0.6018	1.3270
9	0.1564	0.9877	0.1584	54	0.8090	0.5878	1.3764
10	0.1736	0.9848	0.1763	55	0.8192	0.5736	1.4281
11	0.1908	0.9816	0.1944	56	0.8290	0.5592	1.4826
12	0.2079	0.9781	0.2126	57	0.8387	0.5446	1.5399
13	0.2250	0.9744	0.2309	58	0.8480	0.5299	1.6003
14	0.2419	0.9703	0.2493	59	0.8572	0.5150	1.6643
15	0.2588	0.9659	0.2679	60	0.8660	0.50	1.7321
16	0.2756	0.9613	0.2867	61	0.8746	0.4848	1.8040
17	0.2924	0.9563	0.3057	62	0.8829	0.4695	1.8807
18	0.3090	0.9511	0.3249	63	0.8910	0.4540	1.9626
19	0.3256	0.9455	0.3443	64	0.8988	0.4384	2.0503
20	0.3420	0.9397	0.3640	65	0.9063	0.4226	2.1445
21	0.3584	0.9336	0.3839	66	0.9135	0.4067	2.2460
22	0.3746	0.9272	0.4040	67	0.9205	0.3907	2.3559
23	0.3907	0.9205	0.4245	68	0.9272	0.3746	2.4751
24	0.4067	0.9135	0.4452	69	0.9336	0.3584	2.6051
25	0.4226	0.9063	0.4663	70	0.9397	0.3420	2.7475
26	0.4384	0.8988	0.4877	71	0.9455	0.3256	2.9042
27	0.4540	0.8910	0.5095	72	0.9511	0.3090	3.0777
28	0.4695	0.8829	0.5317	73	0.9563	0.2924	3.2709
29	0.4848	0.8746	0.5543	74	0.9613	0.2756	3.4874
30	0.50	0.8660	0.5774	75	0.9659	0.2588	3.7321
31	0.5150	0.8572	0.6009	76	0.9703	0.2419	4.0108
32	0.5299	0.8480	0.6249	77	0.9744	0.2250	4.3315
33	0.5446	0.8387	0.6494	78	0.9781	0.2079	4.7046
34	0.5592	0.8290	0.6745	79	0.9816	0.1908	5.1446
35	0.5736	0.8192	0.7002	80	0.9848	0.1736	5.6713
36	0.5878	0.8090	0.7265	81	0.9877	0.1564	6.3138
37	0.6018	0.7986	0.7536	82	0.9903	0.1392	7.1154
38	0.6157	0.7880	0.7813	83	0.9925	0.1219	8.1443
39	0.6293	0.7771	0.8098	84	0.9945	0.1045	9.5144
40	0.6428	0.7660	0.8391	85	0.9962	0.0872	11.4301
41	0.6561	0.7547	0.8693	86	0.9976	0.0698	14.3007
42	0.6691	0.7431	0.9004	87	0.9986	0.0523	19.0811
43	0.6820	0.7314	0.9325	88	0.9994	0.0349	28.6363
44	0.6947	0.7193	0.9657	89	0.9998	0.0175	57.2900
45	0.7071	0.7071	1	90	1	0	Undefined

$m^\circ \angle A$	$\sin A$	$\cos A$	$\tan A$	$m^\circ \angle A$	$\sin A$	$\cos A$	$\tan A$
1	0.0175	0.9998	0.0175	46	0.7193	0.6947	1.0355
2	0.0349	0.9994	0.0349	47	0.7314	0.6820	1.0724
3	0.0523	0.9986	0.0524	48	0.7431	0.6691	1.1106
4	0.0698	0.9976	0.0699	49	0.7547	0.6561	1.1504
5	0.0872	0.9962	0.0875	50	0.7660	0.6428	1.1918
6	0.1045	0.9945	0.1051	51	0.7771	0.6293	1.2349
7	0.1219	0.9925	0.1228	52	0.7880	0.6157	1.2799
8	0.1392	0.9903	0.1405	53	0.7986	0.6018	1.3270
9	0.1564	0.9877	0.1584	54	0.8090	0.5878	1.3764
10	0.1736	0.9848	0.1763	55	0.8192	0.5736	1.4281
11	0.1908	0.9816	0.1944	56	0.8290	0.5592	1.4826
12	0.2079	0.9781	0.2126	57	0.8387	0.5446	1.5399
13	0.2250	0.9744	0.2309	58	0.8480	0.5299	1.6003
14	0.2419	0.9703	0.2493	59	0.8572	0.5150	1.6643
15	0.2588	0.9659	0.2679	60	0.8660	0.50	1.7321
16	0.2756	0.9613	0.2867	61	0.8746	0.4848	1.8040
17	0.2924	0.9563	0.3057	62	0.8829	0.4695	1.8807
18	0.3090	0.9511	0.3249	63	0.8910	0.4540	1.9626
19	0.3256	0.9455	0.3443	64	0.8988	0.4384	2.0503
20	0.3420	0.9397	0.3640	65	0.9063	0.4226	2.1445
21	0.3584	0.9336	0.3839	66	0.9135	0.4067	2.2460
22	0.3746	0.9272	0.4040	67	0.9205	0.3907	2.3559
23	0.3907	0.9205	0.4245	68	0.9272	0.3746	2.4751
24	0.4067	0.9135	0.4452	69	0.9336	0.3584	2.6011
25	0.4226	0.9063	0.4663	70	0.9397	0.3420	2.7475
26	0.4384	0.8988	0.4877	71	0.9455	0.3256	2.9042
27	0.4540	0.8910	0.5095	72	0.9511	0.3090	3.0777
28	0.4695	0.8829	0.5317	73	0.9563	0.2924	3.2709
29	0.4848	0.8746	0.5543	74	0.9613	0.2756	3.4874
30	0.50	0.8660	0.5774	75	0.9659	0.2588	3.7321
31	0.5150	0.8572	0.6009	76	0.9703	0.2419	4.0108
32	0.5299	0.8480	0.6249	77	0.9744	0.2250	4.3315
33	0.5446	0.8387	0.6494	78	0.9781	0.2079	4.7046
34	0.5592	0.8290	0.6745	79	0.9816	0.1908	5.1446
35	0.5736	0.8192	0.7002	80	0.9848	0.1736	5.6713
36	0.5878	0.8090	0.7265	81	0.9877	0.1564	6.3138
37	0.6018	0.7986	0.7536	82	0.9903	0.1392	7.1154
38	0.6157	0.7880	0.7813	83	0.9925	0.1219	8.1443
39	0.6293	0.7771	0.8098	84	0.9945	0.1045	9.5144
40	0.6428	0.7660	0.8391	85	0.9962	0.0872	11.4301
41	0.6561	0.7547	0.8693	86	0.9976	0.0698	14.3007
42	0.6691	0.7431	0.9008	87	0.9986	0.0523	19.0811
43	0.6820	0.7314	0.9325	88	0.9994	0.0349	28.6363
44	0.6947	0.7193	0.9657	89	0.9998	0.0175	57.2900
45	0.7071	0.7071	1	90	1	0	Undefined

State the value of theta, given the value of sine, cosine or tangent.

$$\underline{\underline{\sin \theta}} = 0.9613$$

$$\theta = 74^\circ$$

$$\underline{\underline{\tan \theta}} = 0.8693$$

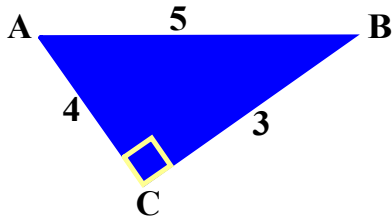
$$\theta = 41^\circ$$

$$\underline{\underline{\cos \theta}} = 0.4384$$

$$\theta = 64^\circ$$

## Finding The Primary Ratios

1.



$$\sin \sigma = \frac{\text{opp}}{\text{hyp}} \quad \cos \sigma = \frac{\text{adj}}{\text{hyp}} \quad \tan \sigma = \frac{\text{opp}}{\text{adj}}$$

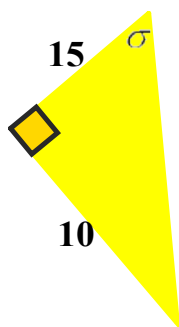


You must  
always have a  
right-angled  
triangle!

Where is theta?

## Finding The Primary Ratios

2.



$$\sin \sigma = \frac{\text{opp}}{\text{hyp}}$$

$$\cos \sigma = \frac{\text{adj}}{\text{hyp}}$$

$$\tan \sigma = \frac{\text{opp}}{\text{adj}}$$

Am I missing something?

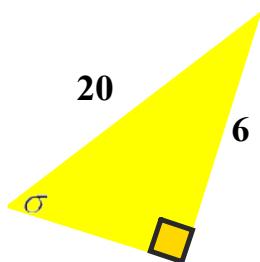




## Finding The Primary Ratios

3.

$$\sin\sigma = \frac{\text{opp}}{\text{hyp}} \quad \cos\sigma = \frac{\text{adj}}{\text{hyp}} \quad \tan\sigma = \frac{\text{opp}}{\text{adj}}$$



#1

a)  $\sin \theta = \frac{opp}{hyp} = \frac{14}{20}$   
 $\cos \theta = \frac{adj}{hyp} = \frac{14}{20}$   
 $\theta = 46^\circ$

b)  $\sin \theta = \frac{opp}{hyp} = \frac{10}{13}$   
 $\theta = 50^\circ$

c)  $\sin \theta = \frac{opp}{hyp} = \frac{4}{11}$   
 $\theta = 21^\circ$

d)  $\sin \theta = \frac{opp}{hyp} = \frac{8}{17}$   
 $\theta = 28^\circ$

e)  $\tan \theta = \frac{opp}{adj} = \frac{9}{12}$   
 $\theta = 37^\circ$

f)  $\sin \theta = \frac{opp}{hyp} = \frac{24}{26}$   
 $\theta = 57^\circ$

g)  $\tan \theta = \frac{opp}{adj} = \frac{16}{17}$   
 $\theta = 43^\circ$

h)  $\cos \theta = \frac{adj}{hyp} = \frac{4}{5}$   
 $\theta = 37^\circ$

## Attachments

---

Trig\_activity(1).xls

Trig Activity.xls