

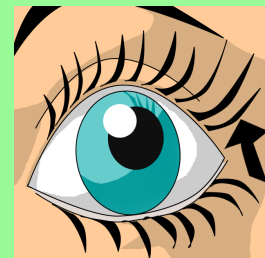
# Feb 5, 2020

- 1) Plant vs Animal Cells
  - Organelles Structure/Function

## Quiz Monday!!

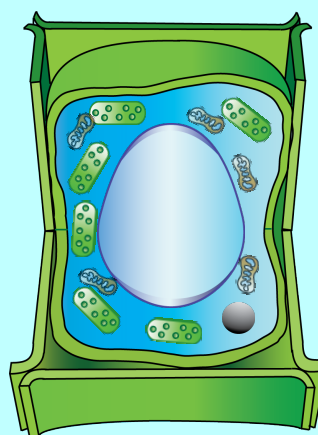
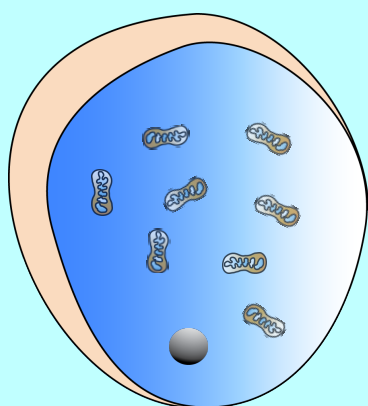
### Warm-up:

The human eye blinks an average of  million times each year

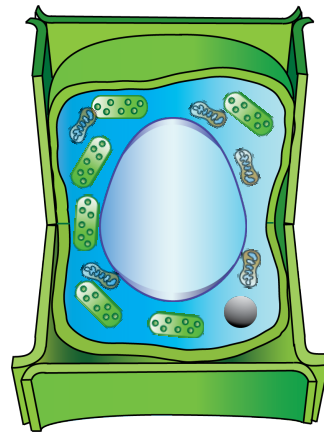
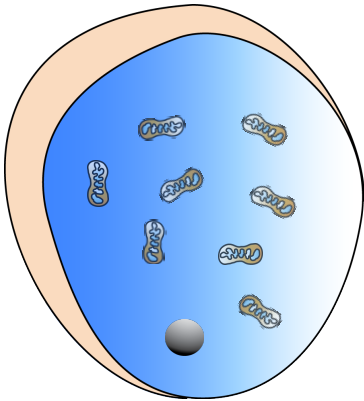


There are two types of cells.

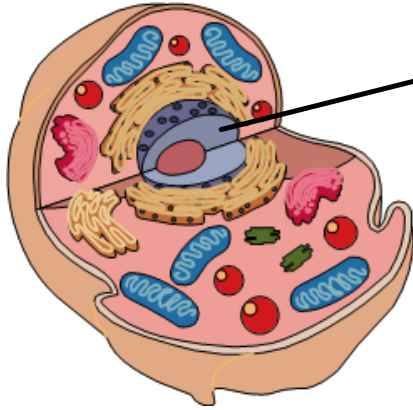
Which do you think is the animal cell and why?



Which cellular organelle is found only in plant cells and not animal cells?



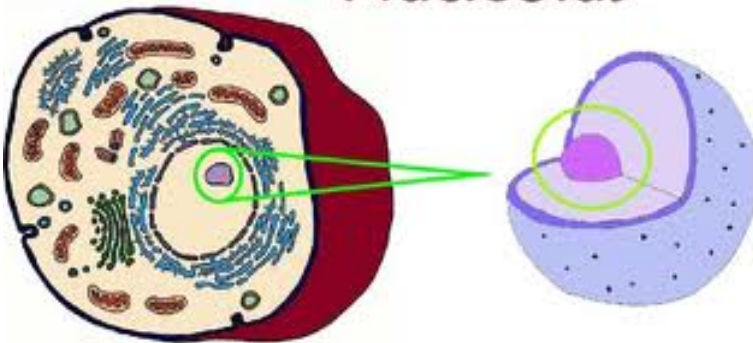
Which cellular organelle is found only in animal cells and not plant cells?



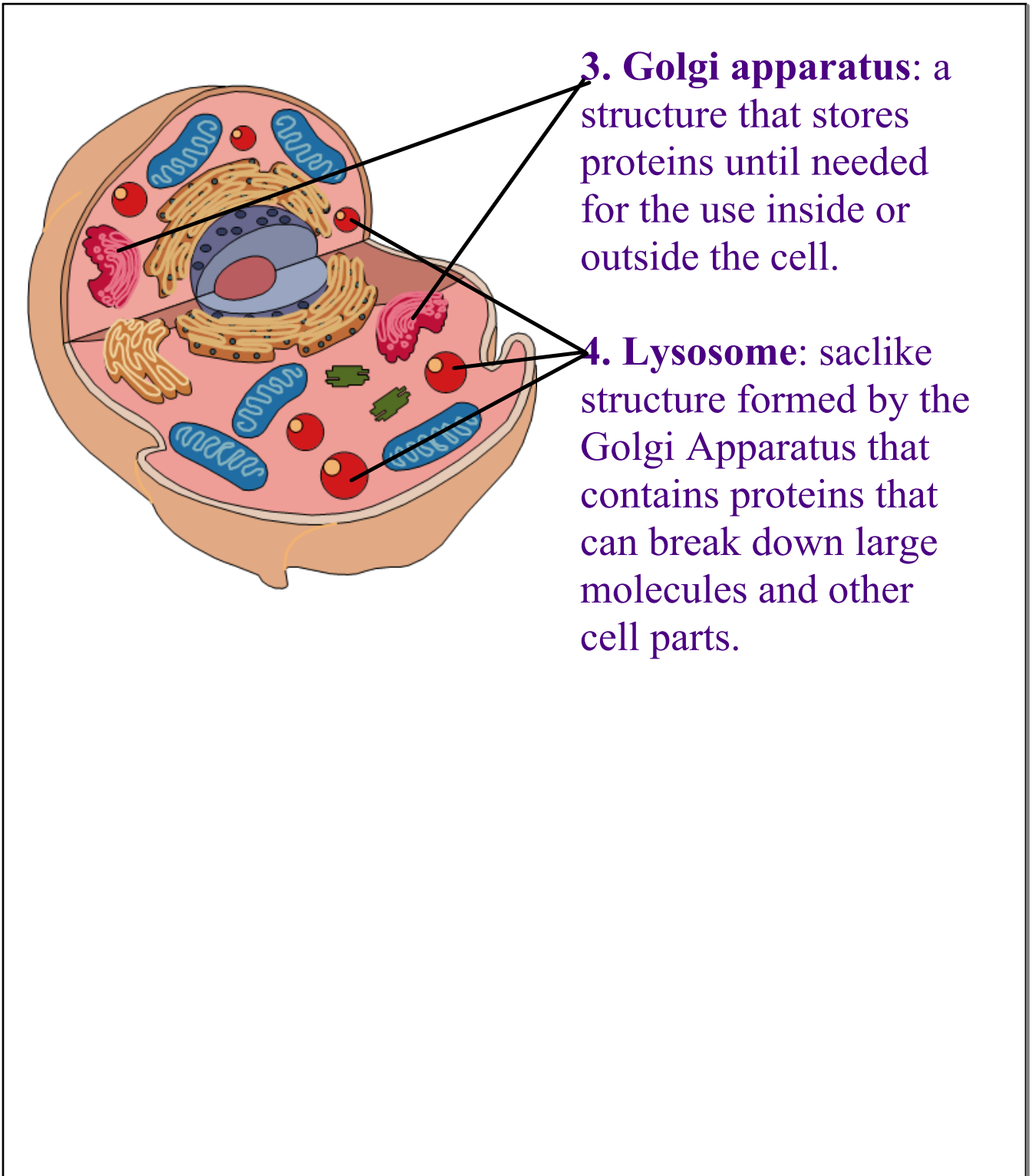
### 1. The Nucleus

- The nucleus of a eukaryotic cell directs the cell's activities and stores DNA.
- Contains genetic material.

### 2. Nucleolus



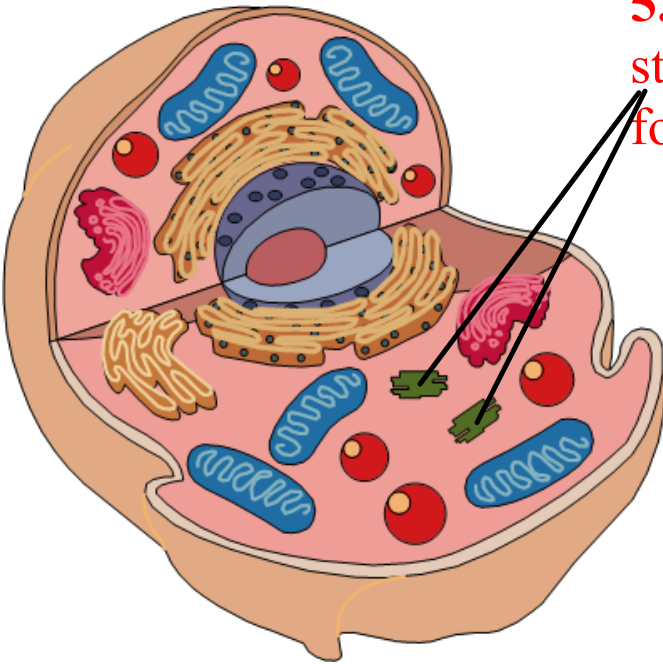
a spherical structure within the nucleus of some cells, probably involved in making proteins

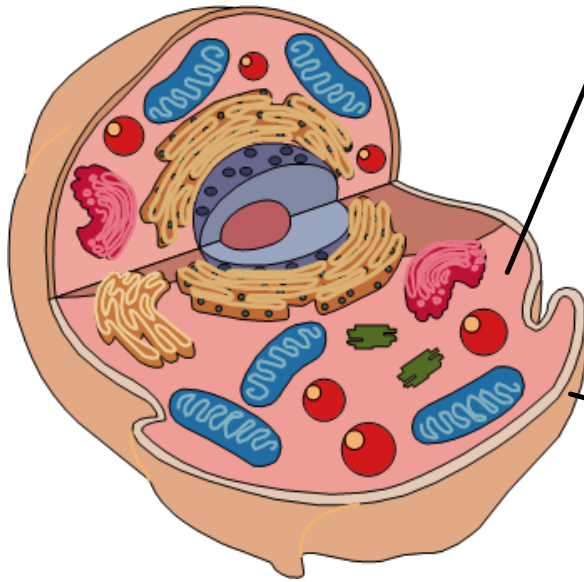


Organelles Specific to Plants ONLY and Animals ONLY

Animals ONLY

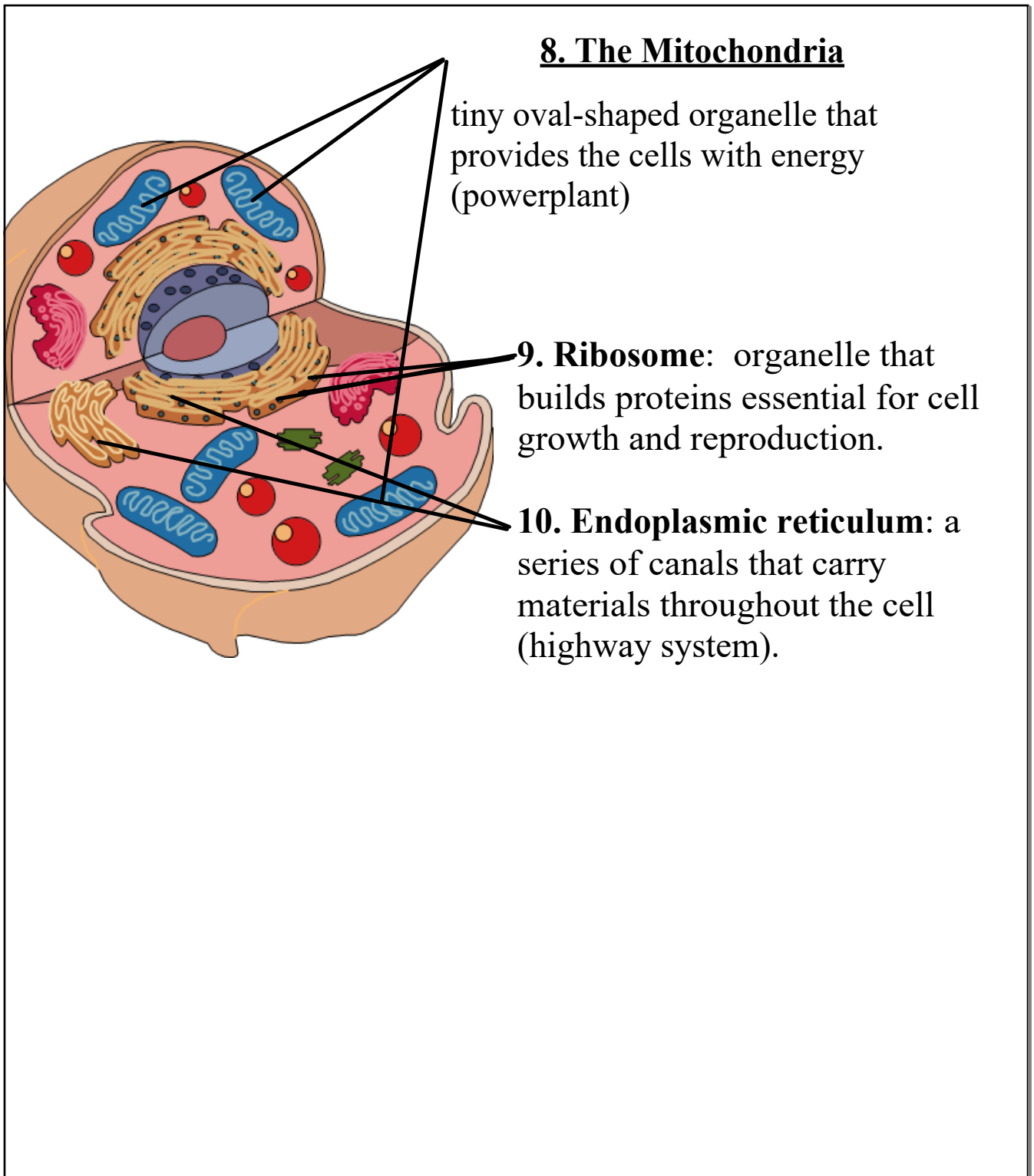
**5. Centriole:** small protein structure critical to cell division found only in animal cells





**6. Cytoplasm:** area in cells where work is done, the jelly-like substance that holds everything in place.

**7. Cell membrane:** controls what goes in and out of the cell (gatekeeper)



**8. The Mitochondria**

tiny oval-shaped organelle that provides the cells with energy (powerplant)

**9. Ribosome:** organelle that builds proteins essential for cell growth and reproduction.

**10. Endoplasmic reticulum:** a series of canals that carry materials throughout the cell (highway system).



# Plant organelles

Plant cells have the same organelles as animal cells with a couple of exceptions.

## 11. Vacuole

(bigger in plants than animals)  
fluid filled space for storing water and wastes

12. Cell Wall: the nonliving outermost covering in plant cell

13. Chloroplast:  
contains chlorophyll

