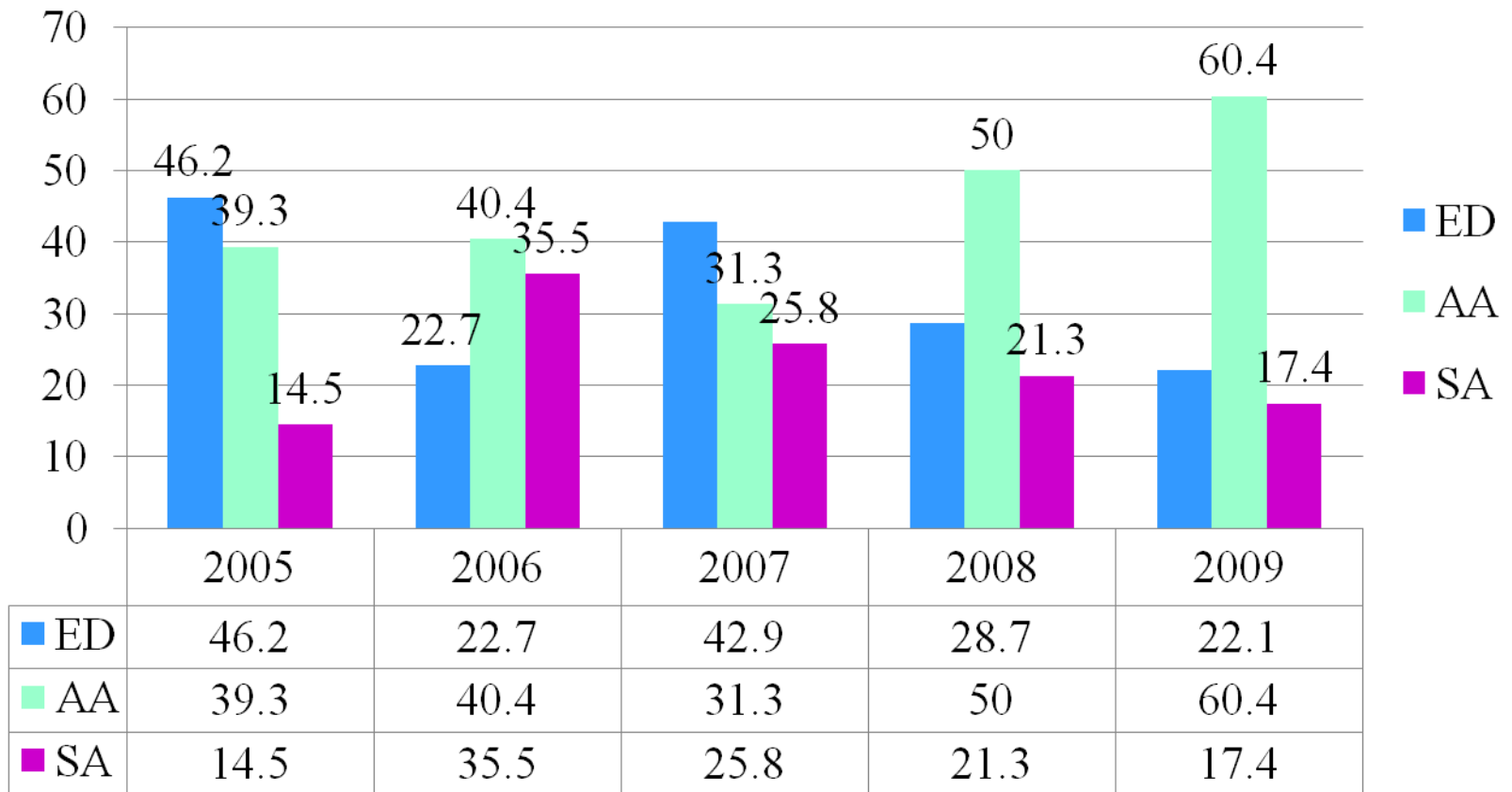
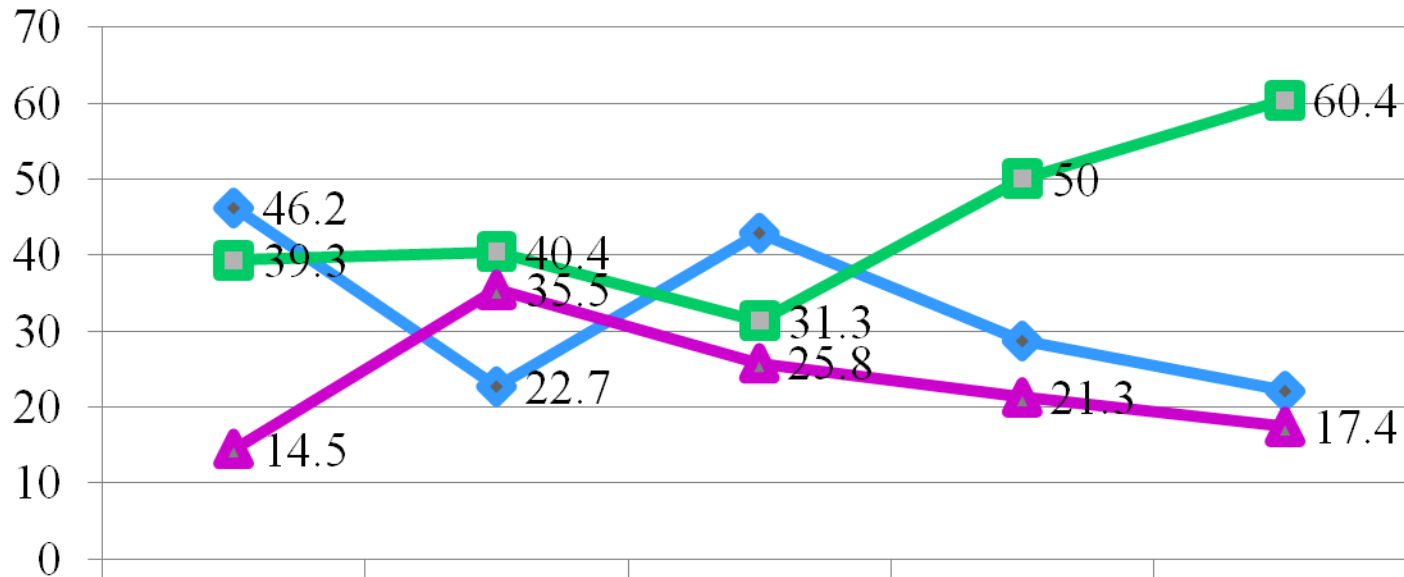


PROVINCIAL LITERACY
ASSESSMENT
2009-2010

JAMES M. HILL PROV. READING ASSESSMENT

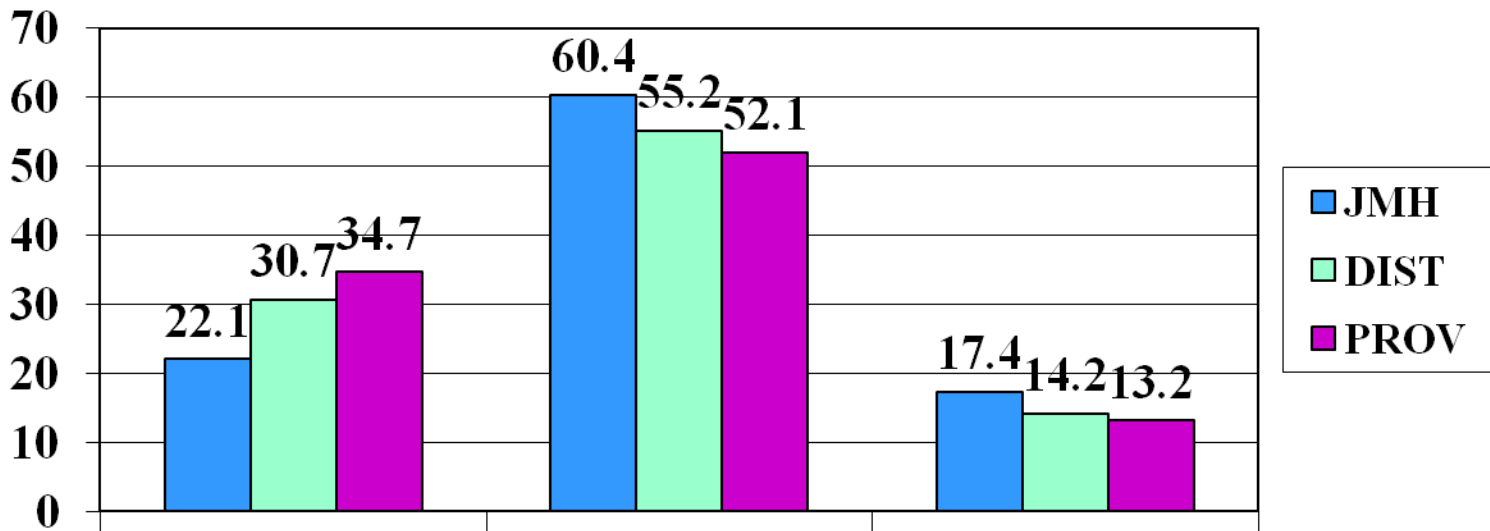


JAMES M. HILL PROV. READING ASSESSMENT



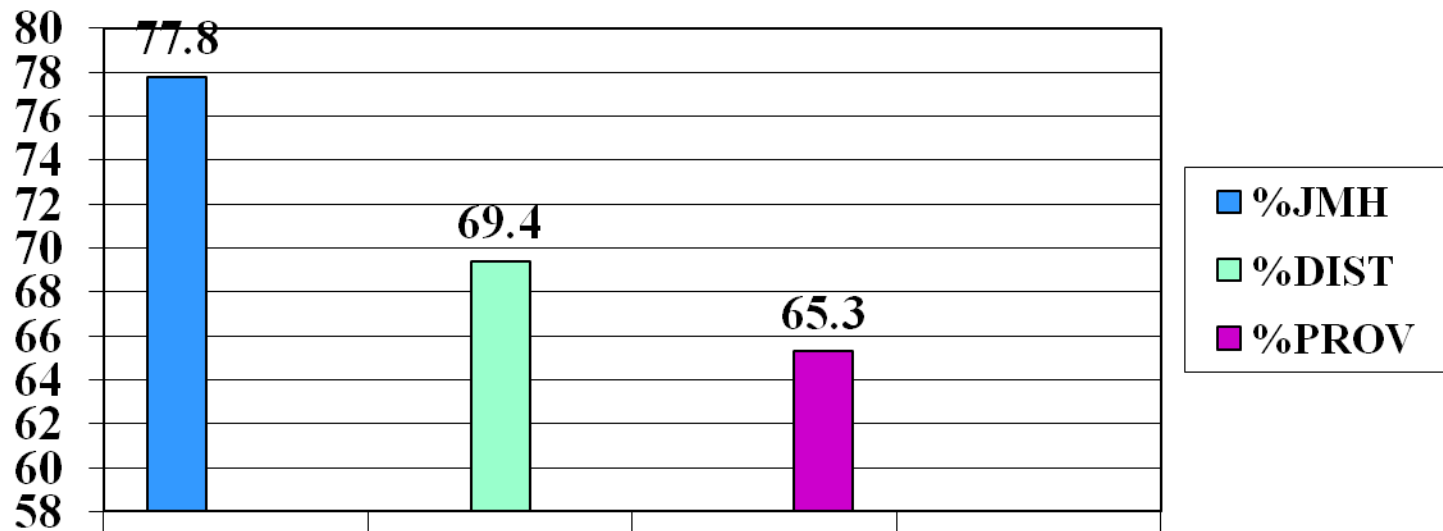
	2005	2006	2007	2008	2009
ED	46.2	22.7	42.9	28.7	22.1
AA	39.3	40.4	31.3	50	60.4
SA	14.5	35.5	25.8	21.3	17.4

READING ASSESSMENT 2009-2010



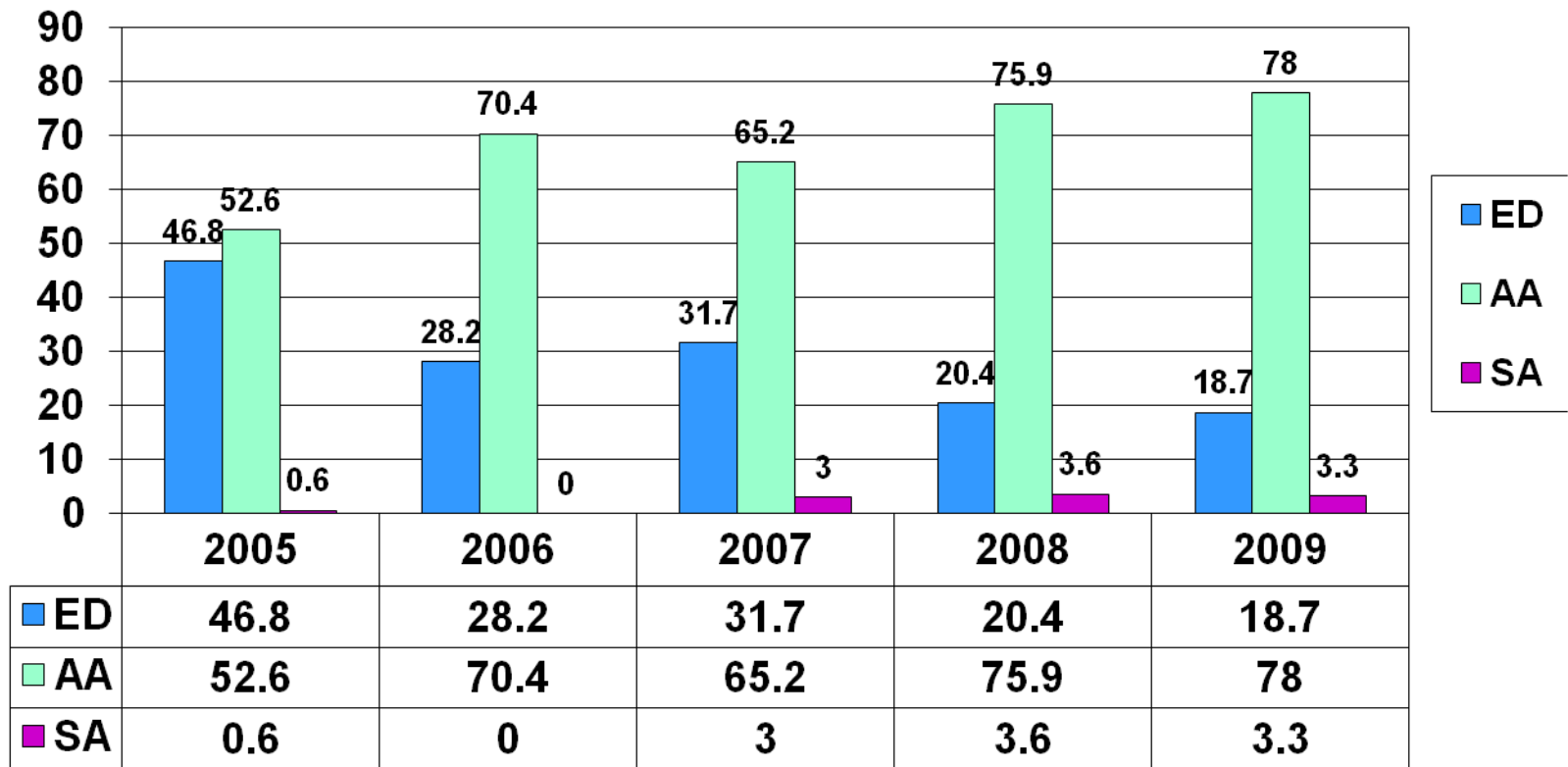
	ED	AA	SA
JMH	22.1	60.4	17.4
DIST	30.7	55.2	14.2
PROV	34.7	52.1	13.2

READING ASSESSMENT SUCCESS RATE 2009-2010

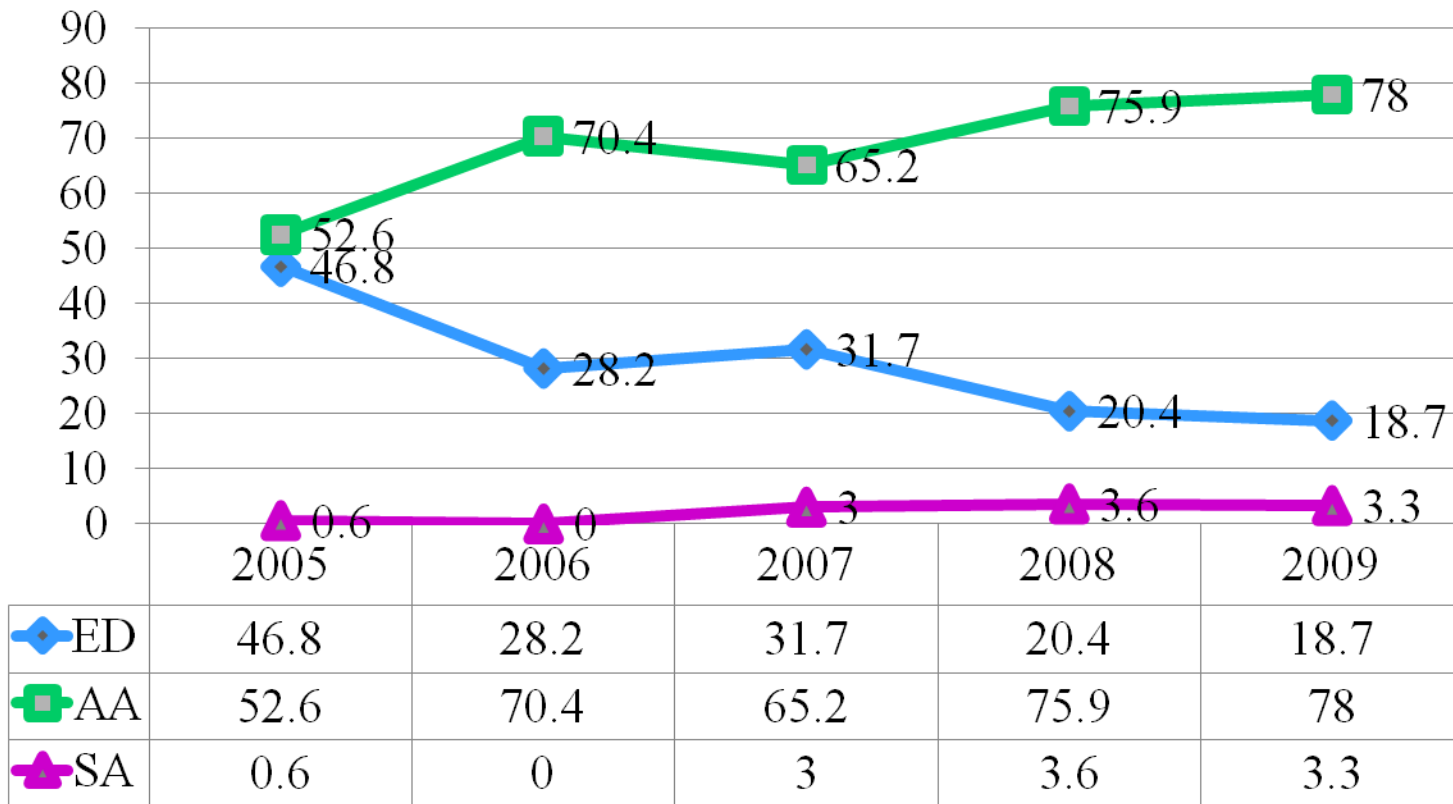


	JMH	DIST	PROV	
%JMH	77.8			
%DIST		69.4		
%PROV			65.3	

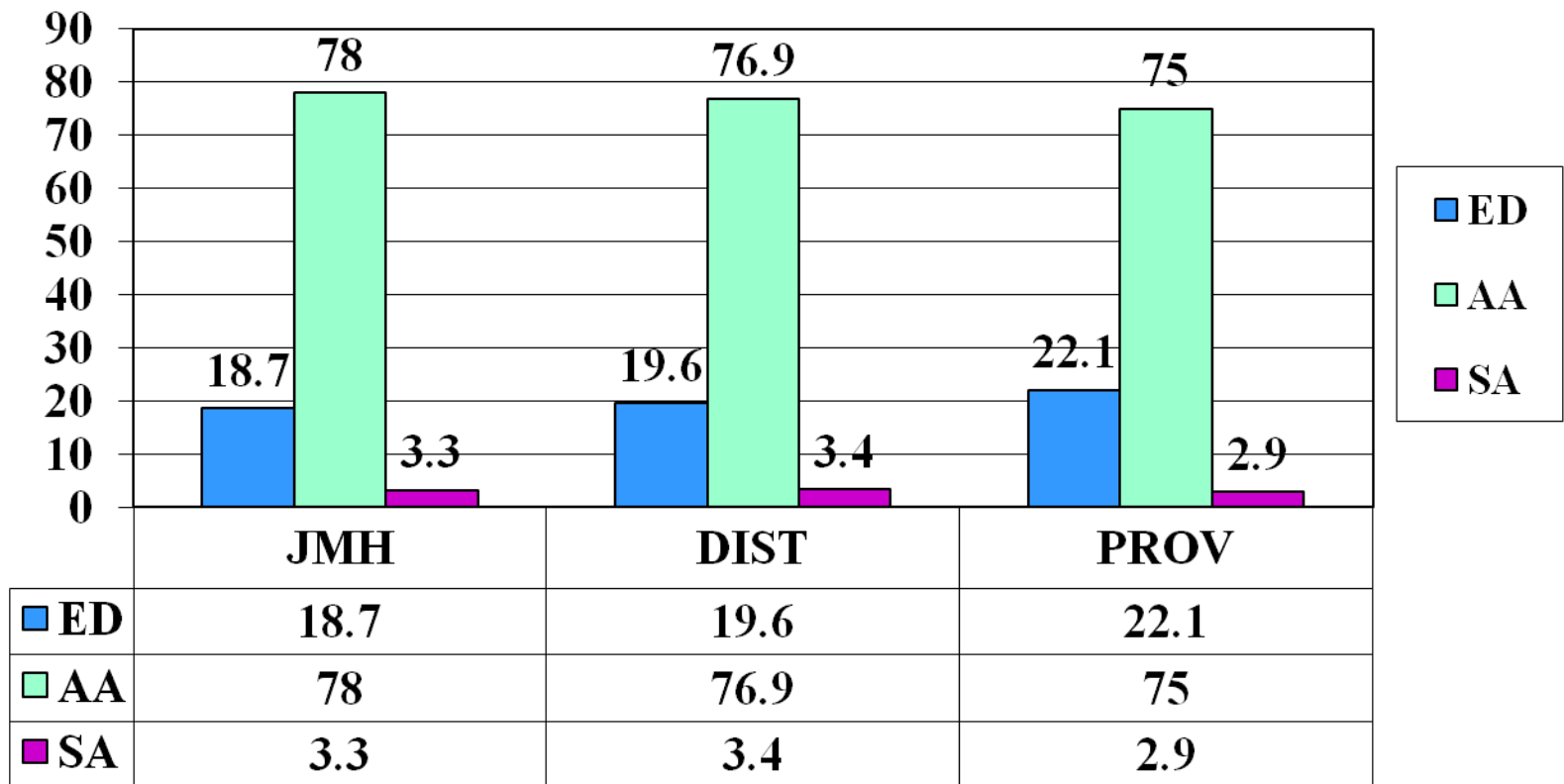
JAMES M. HILL PROV. WRITING ASSESSMENT



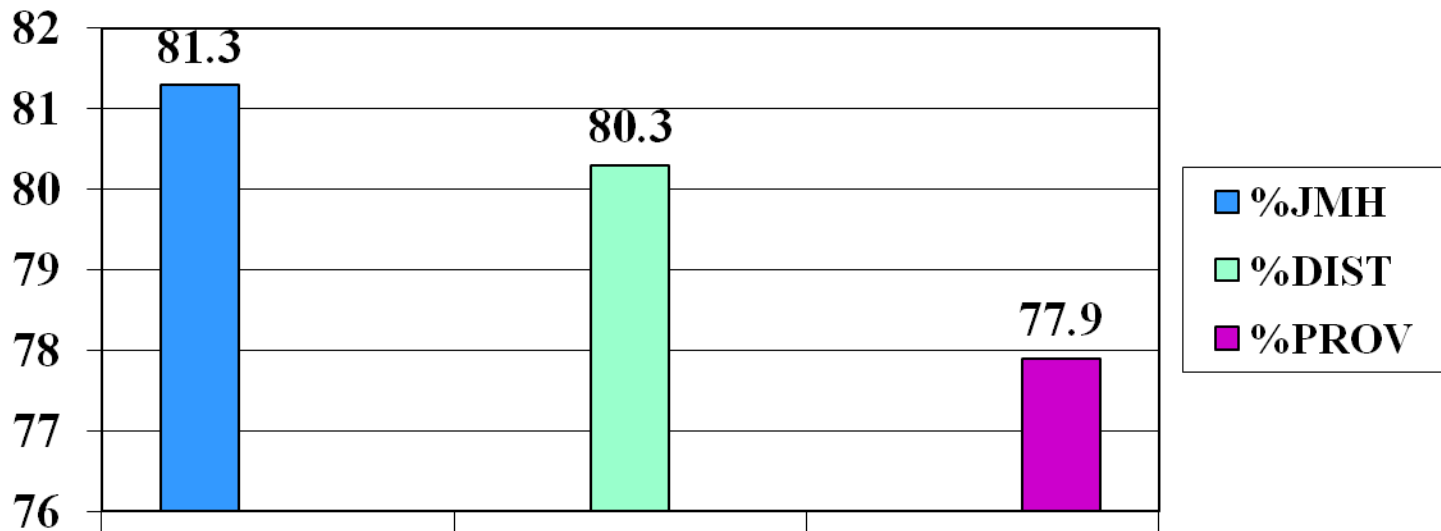
JAMES M. HILL PROV. WRITING ASSESSMENT



WRITING ASSESSMENT 2009-2010



WRITING ASSESSMENT SUCCESS RATE 2009-2010



	JMH	DIST	PROV
■ %JMH	81.3		
■ %DIST		80.3	
■ %PROV			77.9